

Charming holiday letting Ostende "Florivan"

In this cozy cottage with all the comforts to make you feel immediately at home! The owner is available to you for questions personally!



Charming Duplex ground floor, separate entrance, in a(an) Charming House single storey

Setting : seaside

Capacity : from 1 to 5 person(s)

Bedroom(s) : 2

Room(s) : 3



Charmance ()
Meublés de Tourisme (3 stars)



Theme breaks
Nature discovery

Ostende - West Flanders - Flanders

Belgium

Advert No. 3231

www.au.ih.com



>> HOLIDAY LETTINGS

BOOK DIRECT WITH THE OWNERS

Charming holiday letting



Charming Duplex ground floor, separate entrance, in a(an) Charming House single storey

- **Ideal for all age groups**
- **View :** sea/ocean, garden/park, town, street/avenue
- **Setting :** seaside
- **Exposure :** South-east

" Extras: digital tv and free internet access (wifi). Board games and read books in several languages. Kitchen fully equipped with generous amenities and even herbs. Tea and coffee service upon arrival. Washing machine on request. No parking problems: free car parking in front of or close to the House. In the Mediterranean garden with covered terrace you can enjoy a breakfast or a social gathering. The cottage is child-friendly decorated. Free baby cot and Chair. Pets welcome. Use of bed linen and towels (bath and kitchen) are included in the rental price. "

Assets

- **Parking :**
Parking uncovered
- **baby equipment :**
Baby chair, baby potty

Surroundings & location



" Ostend (Oostende): a port city with a glorious history and five beautiful beaches: the East Beach, the small beach, the large beach, the Mariakerkestrand and the Raversijdestrand. Especially suited for children. For them there is a special events guide "Oostende Ahoi" available at Tourism Ostend. Several points of interest. You can visit on your own using the Guidebook ' Alle 13 goed '. 1. Historical Museum De Plate, 2. James Ensorhuis, 3. Prins Karel Memorial, 4. the Atlantic wall, 5. Museum of Walraversijde, 6. Fort Napoleon, 7. the Japanese garden, 8. the three-master Mercator, 9. Museum of modern art, 10. Museum of fine arts, 11. Amandine (the last Iceland fishing boat of Ostend), 12. St. Peter's Tower, 13. The Peter and Paul church with the tomb of the first Queen of Belgium. Be sure to visit the surrounding polders, the picturesque village of Stene and the beautiful cities of Diksmuide and Veurne. "

Leisure

- **Leisure activities less than 20 km / 12 miles :**

Bathing, scuba diving, windsurfing, sailing, kite surfing, golf, tennis, riding school, pathway, coastal/forest paths, hiking, mountain bike (path), kite flying, flying (club), boat trips, horse trekking, mini-golf, skate board (ramps), go-karting, ten-pin bowling, paintball, fishing, angling, pétanque pitch

Surroundings

- **Locality :**
Heated swimming pool 4km
Sea/ocean 800m
Sandy beach
Nudist beach 7,5km
Creek 5km
Public swimming pool 4km
Public tennis court 2km
9 hole golf course 3km
18 hole golf course 10km
Windsurfing spots 3km
Forest 25km
Marina 4km



kitchen



living room



separate kitchen

Interior

- **Receive up to :**
from 1 to 5 person(s) (4 adults, 1 children)
- **Liveable floor area :**
60m²
- **Interior layout :**
3 Room(s), 2 bedroom(s), 1 bathroom, 1 shower room, 1 WC, living room 20m², separate kitchen, dining area, veranda
- **Sleeps - bed(s) :**
1 double bed(s), 1 sofa bed(s) 2 pers, 2 single bed(s), 1 baby cot(s), 1 possible extra bed(s)
- **Guest facilities :**
T.V., hi-fi system, videoplayer, DVD player, board games, book collection, film collection, cable/satelite, wifi, cupboard, hair dryer, power shower, fly screens, central heating, Curtains, Blinds, Double glazed, Rolling shutters, digipad entry system, fire alarm
- **Appliances :**
Crockery/cuttlery, kitchen utensils, cafetiere, electric coffee maker, electric kettle, toaster, juicer, gas cooker, oven, micro-wave oven, extractor hood, refridgerator, freezer, dish washer, washing machine, vacuum cleaner, iron, ironing board

Exterior

- **Ground surface :**
200m²
- **Outside accommodation :**
Covered terrace 20m², sundeck 20m²
- **Outside setting :**
Private courtyard 30m², enclosed grounds 200m², garden 30m²
- **Outside amenities :**
Garden table(s), 4 garden seat(s)



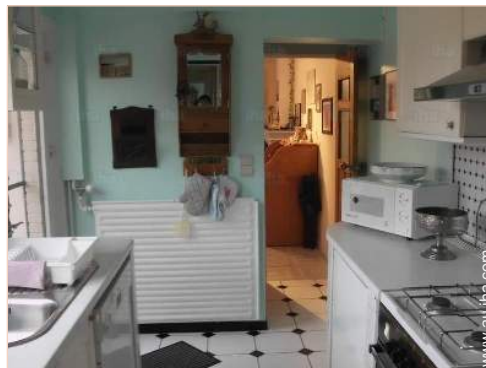
bathroom

Services

- **Washing :**
Sheets supplement (+\$A16*), Towels, Linen, Beach towels, Blanket(s), Quilt(s), Pillows
- **House :**
Cleaning on departure supplement (+\$A79*), Garden/swimming pool maintenance, Parking

For your guidance

- **For your guidance**
Children welcome
Pets accepted
Non smoking rental
Water : hot/cold
Local voltage supply : 220V / 60Hz
- **Handicapped people welcome**
Fitted out for the disabled : mobility, visually impaired, hard of hearing, mentally



separate kitchen

Floor plan



Photo album - 1



living room



kitchen

separate kitchen



separate kitchen

bathroom

Photo album - 2



bedroom



bedroom



bedroom



bedroom



garden



covered terrace

Photo album - 3



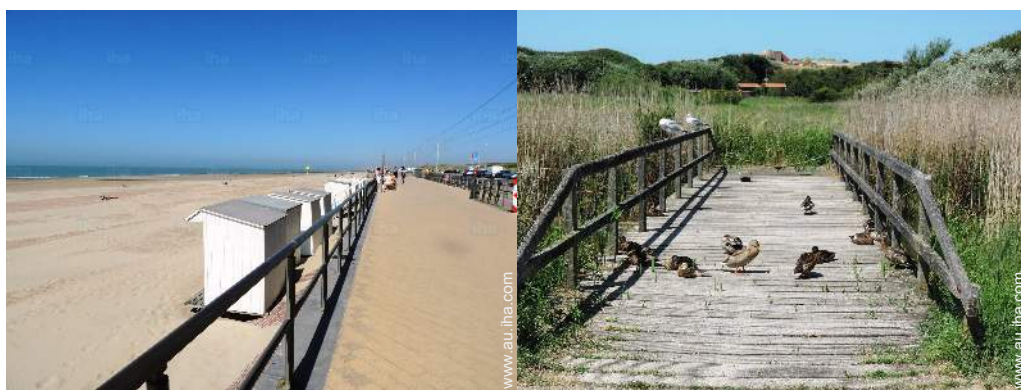
covered terrace

garden



the house

shower room



seaside pursuits nearby

nature reserve



seaside pursuits nearby

[Theme breaks](#)

Nature discovery

[Favourite photo gallery - 1](#)



Apr 2017

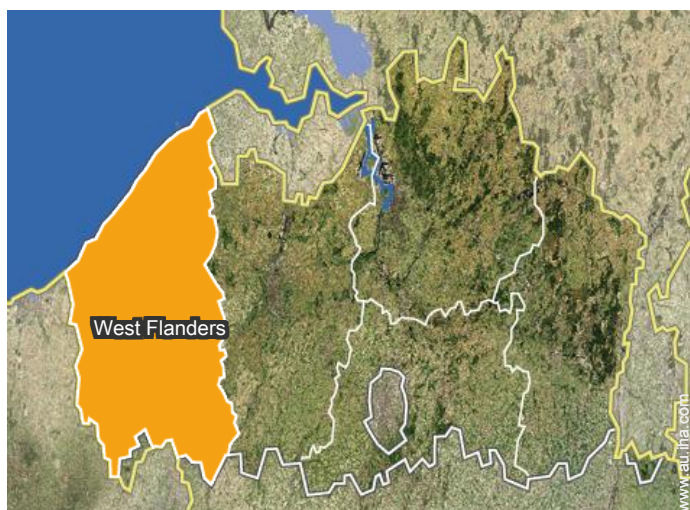


Nov 2017




Nov 2017

Location



Location & Access

" The House is quietly located in a better residential area and easily accessible with public transport. Only 10 walking minutes from the beautiful and wide sandy beach! Also Bruges, Ghent, Antwerp and Brussels are from Ostend very easily accessible by train. "

 GPS coordinates in degrees, minutes, seconds: Latitude 51°12'39"N - Longitude 2°52'57"E (Dwelling)

Address

→ Stokkellaan 175
8400 Ostende

● Motorway (junction) A10

→ Ostende, West Flanders, Flanders, Belgium

→ Distance : 20m
→ Time : 5'

● Train station Ostend

→ Ostende, West Flanders, Flanders, Belgium

→ Distance : 20m
→ Time : 5'

● Airport Ostende Bruges

→ Ostende, West Flanders, Flanders, Belgium

→ Distance : 800m
→ Time : 5'

● Bruges : (20km)

Contact

Spoken languages



Charming holiday letting West Flanders - Ostende "Florivan"

11

[Book now](#)

Availability calendar - from : march 2018

| Mar | Th | F | Sa | Su | M | Tu | W | Th | F | Sa | Su | M | Tu | W | Th | F | Sa | Su | M | Tu | W | Th | F | Sa | Su | M | Tu | W | Th | F | Sa | |
|------|----|---|----|----|---|----|---|----|---|----|----|----|----|----|----|----|----|----|----|----|----|----|----|----|----|----|----|----|----|----|----|--|
| 2018 | 1 | 2 | 3 | 4 | 5 | 6 | 7 | 8 | 9 | 10 | 11 | 12 | 13 | 14 | 15 | 16 | 17 | 18 | 19 | 20 | 21 | 22 | 23 | 24 | 25 | 26 | 27 | 28 | 29 | 30 | 31 | |
| | | | | | | | | | | | | | | | | | | | | | | | | | | | | | | | | |

| Apr | Su | M | Tu | W | Th | F | Sa | Su | M | Tu | W | Th | F | Sa | Su | M | Tu | W | Th | F | Sa | Su | M | Tu | W | Th | F | Sa | Su | M |
|------|----|---|----|---|----|---|----|----|---|----|----|----|----|----|----|----|----|----|----|----|----|----|----|----|----|----|----|----|----|----|
| 2018 | 1 | 2 | 3 | 4 | 5 | 6 | 7 | 8 | 9 | 10 | 11 | 12 | 13 | 14 | 15 | 16 | 17 | 18 | 19 | 20 | 21 | 22 | 23 | 24 | 25 | 26 | 27 | 28 | 29 | 30 |
| | - | - | - | - | - | - | - | - | - | - | - | - | - | - | - | - | - | - | - | - | - | - | - | - | - | - | - | - | - | - |

| May | Tu | W | Th | F | Sa | Su | M | Tu | W | Th | F | Sa | Su | M | Tu | W | Th | F | Sa | Su | M | Tu | W | Th | F | Sa | Su | M | Tu | W | Th |
|------|----|---|----|---|----|----|---|----|---|----|----|----|----|----|----|----|----|----|----|----|----|----|----|----|----|----|----|----|----|----|----|
| 2018 | 1 | 2 | 3 | 4 | 5 | 6 | 7 | 8 | 9 | 10 | 11 | 12 | 13 | 14 | 15 | 16 | 17 | 18 | 19 | 20 | 21 | 22 | 23 | 24 | 25 | 26 | 27 | 28 | 29 | 30 | 31 |
| | - | - | - | - | - | - | - | - | - | - | - | - | - | - | - | - | - | - | - | - | - | - | - | - | - | - | - | - | - | - | - |

| June | F | Sa | Su | M | Tu | W | Th | F | Sa | Su | M | Tu | W | Th | F | Sa | Su | M | Tu | W | Th | F | Sa | Su | M | Tu | W | Th | F | Sa |
|------|---|----|----|---|----|---|----|---|----|----|----|----|----|----|----|----|----|----|----|----|----|----|----|----|----|----|----|----|----|----|
| 2018 | 1 | 2 | 3 | 4 | 5 | 6 | 7 | 8 | 9 | 10 | 11 | 12 | 13 | 14 | 15 | 16 | 17 | 18 | 19 | 20 | 21 | 22 | 23 | 24 | 25 | 26 | 27 | 28 | 29 | 30 |
| | - | - | - | - | - | - | - | - | - | - | - | - | - | - | - | - | - | - | - | - | - | - | - | - | - | - | - | - | - | - |

| Jul | Su | M | Tu | W | Th | F | Sa | Su | M | Tu | W | Th | F | Sa | Su | M | Tu | W | Th | F | Sa | Su | M | Tu | W | Th | F | Sa | Su | M | Tu |
|------|----|---|----|---|----|---|----|----|---|----|----|----|----|----|----|----|----|----|----|----|----|----|----|----|----|----|----|----|----|----|----|
| 2018 | 1 | 2 | 3 | 4 | 5 | 6 | 7 | 8 | 9 | 10 | 11 | 12 | 13 | 14 | 15 | 16 | 17 | 18 | 19 | 20 | 21 | 22 | 23 | 24 | 25 | 26 | 27 | 28 | 29 | 30 | 31 |
| | - | - | - | - | - | - | - | - | - | - | - | - | - | - | - | - | - | - | - | - | - | - | - | - | - | - | - | - | - | - | - |

| Aug | W | Th | F | Sa | Su | M | Tu | W | Th | F | Sa | Su | M | Tu | W | Th | F | Sa | Su | M | Tu | W | Th | F | Sa | Su | M | Tu | W | Th | F |
|------|---|----|---|----|----|---|----|---|----|----|----|----|----|----|----|----|----|----|----|----|----|----|----|----|----|----|----|----|----|----|----|
| 2018 | 1 | 2 | 3 | 4 | 5 | 6 | 7 | 8 | 9 | 10 | 11 | 12 | 13 | 14 | 15 | 16 | 17 | 18 | 19 | 20 | 21 | 22 | 23 | 24 | 25 | 26 | 27 | 28 | 29 | 30 | 31 |
| | - | - | - | - | - | - | - | - | - | - | - | - | - | - | - | - | - | - | - | - | - | - | - | - | - | - | - | - | - | - | - |

| Sep | Sa | Su | M | Tu | W | Th | F | Sa | Su | M | Tu | W | Th | F | Sa | Su | M | Tu | W | Th | F | Sa | Su | | | | | | | |
|------|----|----|---|----|---|----|---|----|----|----|----|----|----|----|----|----|----|----|----|----|----|----|----|----|----|----|----|----|----|----|
| 2018 | 1 | 2 | 3 | 4 | 5 | 6 | 7 | 8 | 9 | 10 | 11 | 12 | 13 | 14 | 15 | 16 | 17 | 18 | 19 | 20 | 21 | 22 | 23 | 24 | 25 | 26 | 27 | 28 | 29 | 30 |
| | - | - | - | - | - | - | - | - | - | - | - | - | - | - | - | - | - | - | - | - | - | - | - | - | - | - | - | - | - | - |

| Oct | M | Tu | W | Th | F | Sa | Su | M | Tu | W | Th | F | Sa | Su | M | Tu | W | Th | F | Sa | Su | M | Tu | W | Th | F | Sa | Su | M | Tu | W |
|------|---|----|---|----|---|----|----|---|----|----|----|----|----|----|----|----|----|----|----|----|----|----|----|----|----|----|----|----|----|----|----|
| 2018 | 1 | 2 | 3 | 4 | 5 | 6 | 7 | 8 | 9 | 10 | 11 | 12 | 13 | 14 | 15 | 16 | 17 | 18 | 19 | 20 | 21 | 22 | 23 | 24 | 25 | 26 | 27 | 28 | 29 | 30 | 31 |
| | - | - | - | - | - | - | - | - | - | - | - | - | - | - | - | - | - | - | - | - | - | - | - | - | - | - | - | - | - | - | - |

| Nov | Th | F | Sa | Su | M | Tu | W | Th | F | Sa | Su | M | Tu | W | Th | F | Sa | Su | M | Tu | W | Th | F | Sa | Su | M | Tu | W | Th | F |
|------|----|---|----|----|---|----|---|----|---|----|----|----|----|----|----|----|----|----|----|----|----|----|----|----|----|----|----|----|----|----|
| 2018 | 1 | 2 | 3 | 4 | 5 | 6 | 7 | 8 | 9 | 10 | 11 | 12 | 13 | 14 | 15 | 16 | 17 | 18 | 19 | 20 | 21 | 22 | 23 | 24 | 25 | 26 | 27 | 28 | 29 | 30 |
| | - | - | - | - | - | - | - | - | - | - | - | - | - | - | - | - | - | - | - | - | - | - | - | - | - | - | - | - | - | - |

| Dec | Sa | Su | M | Tu | W | Th | F | Sa | Su | M | Tu | W | Th | F | Sa | Su | M | Tu | W | Th | F | Sa | Su | M | | | | | | | |
|------|----|----|---|----|---|----|---|----|----|----|----|----|----|----|----|----|----|----|----|----|----|----|----|----|----|----|----|----|----|----|----|
| 2018 | 1 | 2 | 3 | 4 | 5 | 6 | 7 | 8 | 9 | 10 | 11 | 12 | 13 | 14 | 15 | 16 | 17 | 18 | 19 | 20 | 21 | 22 | 23 | 24 | 25 | 26 | 27 | 28 | 29 | 30 | 31 |
| | - | - | - | - | - | - | - | - | - | - | - | - | - | - | - | - | - | - | - | - | - | - | - | - | - | - | - | - | - | - | |

■ Low season
 ■ Mid season
 ■ Reserved
 ■ High season



Charming holiday letting
Flanders - Belgium
"Florivan"

12
[Book now](#)

Availability calendar - from : december 2018

| Jan | Tu | W | Th | F | Sa | Su | M | Tu | W | Th | F | Sa | Su | M | Tu | W | Th | F | Sa | Su | M | Tu | W | Th | | | | | | | |
|------|----|---|----|---|----|----|---|----|---|----|----|----|----|----|----|----|----|----|----|----|----|----|----|----|----|----|----|----|----|----|----|
| 2019 | 1 | 2 | 3 | 4 | 5 | 6 | 7 | 8 | 9 | 10 | 11 | 12 | 13 | 14 | 15 | 16 | 17 | 18 | 19 | 20 | 21 | 22 | 23 | 24 | 25 | 26 | 27 | 28 | 29 | 30 | 31 |
| | - | - | - | - | - | - | - | - | - | - | - | - | - | - | - | - | - | - | - | - | - | - | - | - | - | - | - | - | - | - | |

| Feb | F | Sa | Su | M | Tu | W | Th | F | Sa | Su | M | Tu | W | Th | F | Sa | Su | M | Tu | W | Th | | | | | | | | |
|------|---|----|----|---|----|---|----|---|----|----|----|----|----|----|----|----|----|----|----|----|----|----|----|----|----|----|----|----|---|
| 2019 | 1 | 2 | 3 | 4 | 5 | 6 | 7 | 8 | 9 | 10 | 11 | 12 | 13 | 14 | 15 | 16 | 17 | 18 | 19 | 20 | 21 | 22 | 23 | 24 | 25 | 26 | 27 | 28 | |
| | - | - | - | - | - | - | - | - | - | - | - | - | - | - | - | - | - | - | - | - | - | - | - | - | - | - | - | - | - |

■ Low season
 ■ Mid season
 ■ Reserved
 ■ High season

[Month : Next >>](#)

Rental rates - Charming Duplex - from 1 to 5 Person(s)

| Rates | Night | Weekend | week | 2 weeks | Month |
|--|-------|---------|---------|---------|-------|
| ■ Low season | - | \$A182* | \$A528* | - | - |
| ■ Mid season | - | \$A201* | \$A616* | - | - |
| ■ High season | - | - | \$A770* | - | - |
| ■ Promotional period | - | - | \$A440* | - | - |

[Book now](#)

Booking conditions

• Reservation

- Payment made upon reservation : 50% of rental sum
- Payment balance : on handing over the keys
- Deposit required : \$A314*

• rentals

- Service charges to be added
- Day tax included
- Cleaning charge levy on departure : \$A79*

[▶ Book now](#)

[▶ Contact the owner](#)

Accepted methods of payment

- Bank transfer (wire) • Cash

Contact directly the property owners

www.au.iha.com
Advert No.
3231
[>> Book now <<](#)

Contact

Spoken languages



* Converted at the rate indicated : €100 = \$123.46 = £88.94 = \$A157.07

Advert No. 3231

www.au.iha.com

