

# Gîte - Self Catering Bagimont "Rêve de Poètes"

You can enjoy the warmth of the open fire and all the comfort that offers our charming cottage. a space cosy where you can relax and enjoy the tranquility of the countryside. You can eat in the garden.



Qualité tourisme ( )

Gîte - Self Catering - Charming Stone-Built House, semi-detached, 1 floor, separate entrance, in a(an) Hamlet

Setting : quiet, pleasant

Capacity : from 4 to 6 person(s)

Bedroom(s) : 3

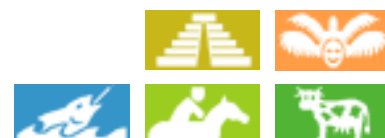
Bagimont - Province of Namur - Walloon

Belgium

Reservation : +32 (0) 61501511 (Belgium)

Advert No. 10164

www.au.ih.com



>> HOLIDAY LETTINGS

BOOK DIRECT WITH THE OWNERS

## Gîte - Self Catering



Gîte - Self Catering - Charming Stone-Built House, semi-detached, 1 floor, separate entrance, in a(an) Hamlet

- **Ideal for family, all age groups**
- **View :** country side, garden/park, forest, village
- **Setting :** quiet, pleasant
- **Exposure :** South

" Come enjoy a delightful setting in a bucolic village, you can relax and find the beauty of nature. You just leave the House to walk in the forest. You like the mountain bike is the perfect place... The village is only a play area for children, do not hesitate to take bikes, very few cars pass to Bagimont. We live in a wonderful area, please come and discover it or rediscover. "

## Assets

- **Parking :**  
Covered parking Parking uncovered
- **baby equipment :**  
Baby chair



cosy nook

## Surroundings & location



Countryside



Horse riding



Fishing



Festival



Culture

" A few kilometres from the beautiful city of Charleville Meziere and its magnificent Ducal place. 5 minutes from the Semois. Bouillon and its castle are 20 km away. Sedan also not far away from us the Abbey of Orval. You can practice kayak or pedalo on the Semois. "

### Leisure

- **Leisure activities less than 20 km / 12 miles :**

Cross-country skiing, bathing, pedalo, canoeing, tennis, riding school, pony club, pathway, coastal/forest paths, hiking, climbing, mountain bike (path), horse-drawn carriage, horse trekking, mini-golf, rollerblade/rollerskate (circuit), go-karting, ten-pin bowling, hunting, big game hunting, acrobatics, fishing, angling, pétanque pitch

- **Supervised :**

Riding school

- **Attractions and relaxation :**

Bar/pub, discotheque, restaurant, cinema, park and garden, leisure park, zoo/animal park, art gallery, historical site, museum, theatre, festivals, antiques & bric-a-brac, local craftshop, beauticians, fitness centre, Bio farm

### Surroundings

- **Locality :**

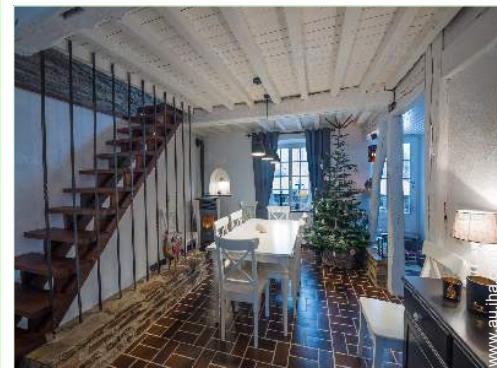
Public swimming pool 15km  
Public tennis court 10km  
River 3km  
Forest <50m

- **Amenities :**

Village centre <50m  
Bus stop / bus station <50m  
Bike/mountain bike hire 10km  
Household linens for hire/laundry services 7,5km  
Breadshop 5km  
Local shops 2km  
Supermarket 5km  
High class retailers 20km  
Hairdressing salon 3km  
Post office 5km  
Bank 15km  
Cash point 15km  
Chemist 10km  
Doctor 7,5km  
Nurse 2km  
Hospital 20km



Kitchen Area



living room



dining room

## Interior

- **Receive up to :**

from 4 to 6 person(s)

- **Interior layout :**

3 bedroom(s), bathroom, WC, living room, sitting room, separate kitchen, dining room, cosy nook, tv room

- **Sleeps - bed(s) :**

2 double bed(s), 1 sofa bed(s) 2 pers, 3 single bed(s), 1 divan 1 pers

- **Guest facilities :**

Fireplace, T.V., hi-fi system, DVD player, board games, book collection, cable/satellite, internet access, wifi, cupboard, Hanging wardrobe, hair dryer, electric heating, Curtains, Blinds

- **Appliances :**

Crockery/cutlery, kitchen utensils, cafetiere, electric coffee maker, electric espresso coffee maker, electric kettle, toaster, electric raclette set, electric hobs, oven, micro-wave oven, extractor hood, refrigerator, freezer, dish washer, washing machine, vacuum cleaner, iron, ironing board

## Exterior

- **Outside accommodation :**

Terrace

- **Outside setting :**

Garden

- **Outside amenities :**

BBQ, garden table(s), garden seat(s), parasol



tv room

## Services

- **Washing :**

Sheets, Quilt(s), Pillows

- **House :**

Cleaning on departure supplement (+ \$A79\*), Parking, Airport transfers supplement

## For your guidance

- **For your guidance**

Children welcome

Pets accepted under certain conditions (ask the owner)

Non smoking rental, mobile telephone network coverage, personal transport advisable

Water : hot/cold

Local voltage supply : 220-240V / 50Hz

Electricity supply : mains



tv room

Photo album - 1



cosy nook



living room



Kitchen Area



dining room



tv room

Photo album - 2



tv room



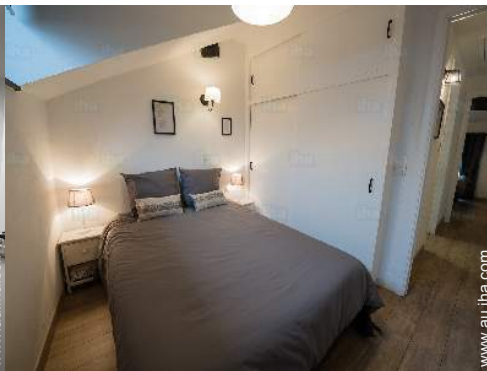
bedroom



bathroom



bathroom



bedroom



bedroom



the house



Hamlet



View



Summer

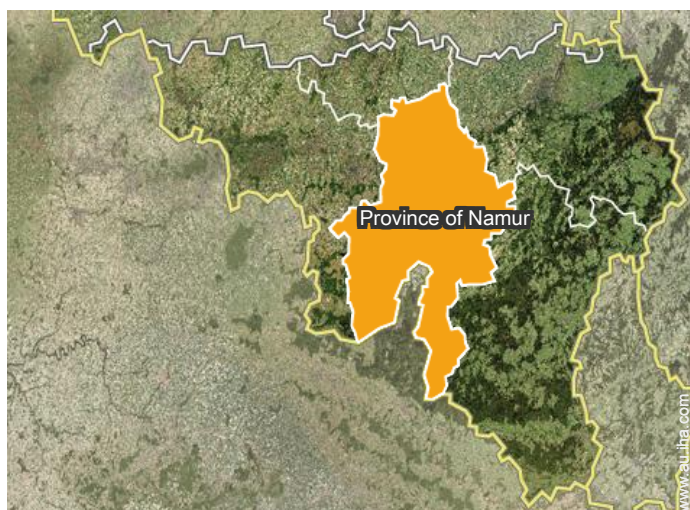


Summer




Summer

## Location



## Location & Access

" E411 exit Wellin follow Gedinne and Charleville. Direction Bagimont "

 GPS coordinates in degrees, minutes, seconds: Latitude 49°49'29"N - Longitude 4°52'35"E (Dwelling)

### Address

→ Rue du Calvaire, 3  
5550 Bagimont

### • Train station Gedinne

→ Gedinne, Province of Namur, Walloon,  
Belgium  
→ Time : 30'

### • Train station Charleville Mézières

→ Charleville-Mézières, Ardennes,  
Champagne-Ardenne, France  
→ Time : 30'

### • Motorway (junction) E411 no. 23

→ Wellin, Province of Luxembourg,  
Walloon, Belgium  
→ Distance : 40km

→ Time : 40'

- Bouillon : (20km)
- Charleville-Mézières : (20km)
- Sedan : (15km)

## Contact

Spoken  
languages



# Gîte - Self Catering Bagimont - Belgium "Rêve de Poètes"

7

[Book now](#)

## Availability calendar - from : june 2019

June	Sa	Su	M	Tu	W	Th	F	Sa	Su	M	Tu	W	Th	F	Sa	Su	M	Tu	W	Th	F	Sa	Su	M	Tu	W	Th	F	Sa	Su
2019	1	2	3	4	5	6	7	8	9	10	11	12	13	14	15	16	17	18	19	20	21	22	23	24	25	26	27	28	29	30

Jul	M	Tu	W	Th	F	Sa	Su	M	Tu	W	Th	F	Sa	Su	M	Tu	W	Th	F	Sa	Su	M	Tu	W	Th	F	Sa	Su	M	Tu	W
2019	1	2	3	4	5	6	7	8	9	10	11	12	13	14	15	16	17	18	19	20	21	22	23	24	25	26	27	28	29	30	31

Aug	Th	F	Sa	Su	M	Tu	W	Th	F	Sa	Su	M	Tu	W	Th	F	Sa	Su	M	Tu	W	Th	F	Sa	Su	M	Tu	W	Th	F	Sa
2019	1	2	3	4	5	6	7	8	9	10	11	12	13	14	15	16	17	18	19	20	21	22	23	24	25	26	27	28	29	30	31

Sep	Su	M	Tu	W	Th	F	Sa	Su	M	Tu	W	Th	F	Sa	Su	M	Tu	W	Th	F	Sa	Su	M							
2019	1	2	3	4	5	6	7	8	9	10	11	12	13	14	15	16	17	18	19	20	21	22	23	24	25	26	27	28	29	30

Oct	Tu	W	Th	F	Sa	Su	M	Tu	W	Th	F	Sa	Su	M	Tu	W	Th	F	Sa	Su	M	Tu	W	Th	F	Sa	Su	M	Tu	W	Th
2019	1	2	3	4	5	6	7	8	9	10	11	12	13	14	15	16	17	18	19	20	21	22	23	24	25	26	27	28	29	30	31

Nov	F	Sa	Su	M	Tu	W	Th	F	Sa	Su	M	Tu	W	Th	F	Sa	Su	M	Tu	W	Th	F	Sa							
2019	1	2	3	4	5	6	7	8	9	10	11	12	13	14	15	16	17	18	19	20	21	22	23	24	25	26	27	28	29	30

Dec	Su	M	Tu	W	Th	F	Sa	Su	M	Tu	W	Th	F	Sa	Su	M	Tu	W	Th	F	Sa	Su	M	Tu							
2019	1	2	3	4	5	6	7	8	9	10	11	12	13	14	15	16	17	18	19	20	21	22	23	24	25	26	27	28	29	30	31

Jan	W	Th	F	Sa	Su	M	Tu	W	Th	F	Sa	Su	M	Tu	W	Th	F	Sa	Su	M	Tu	W	Th	F	Sa	Su	M	Tu	W	Th	F
2020	1	2	3	4	5	6	7	8	9	10	11	12	13	14	15	16	17	18	19	20	21	22	23	24	25	26	27	28	29	30	31

Feb	Sa	Su	M	Tu	W	Th	F	Sa	Su	M	Tu	W	Th	F	Sa	Su	M	Tu	W	Th	F	Sa							
2020	1	2	3	4	5	6	7	8	9	10	11	12	13	14	15	16	17	18	19	20	21	22	23	24	25	26	27	28	29

Mar	Su	M	Tu	W	Th	F	Sa	Su	M	Tu	W	Th	F	Sa	Su	M	Tu	W	Th	F	Sa	Su	M	Tu							
2020	1	2	3	4	5	6	7	8	9	10	11	12	13	14	15	16	17	18	19	20	21	22	23	24	25	26	27	28	29	30	31

Reserved
  Mid season
  High season
  Festive specials



Gîte - Self Catering  
Province of Namur - Walloon  
"Rêve de Poètes"

8

[Book now](#)

Availability calendar - from : march 2020

Apr	W	Th	F	Sa	Su	M	Tu	W	Th	F	Sa	Su	M	Tu	W	Th	F	Sa	Su	M	Tu	W	Th	F	Sa	Su	M	Tu	W	Th
2020	1	2	3	4	5	6	7	8	9	10	11	12	13	14	15	16	17	18	19	20	21	22	23	24	25	26	27	28	29	30
	-	-	-	-	-	-	-	-	-	-	-	-	-	-	-	-	-	-	-	-	-	-	-	-	-	-	-	-	-	

May	F	Sa	Su	M	Tu	W	Th	F	Sa	Su	M	Tu	W	Th	F	Sa	Su	M	Tu	W	Th	F	Sa	Su							
2020	1	2	3	4	5	6	7	8	9	10	11	12	13	14	15	16	17	18	19	20	21	22	23	24	25	26	27	28	29	30	31
	-	-	-	-	-	-	-	-	-	-	-	-	-	-	-	-	-	-	-	-	-	-	-	-	-	-	-	-	-		

Reserved
  Mid season
  High season
  Festive specials

[Month : Next >>](#)

Rental rates - Gîte - Self Catering - Charming Stone-Built House - from 4 to 6 Person(s)

Rates	Night	Weekend	week	2 weeks	Month
<span style="color: green;">■</span> Low season	-	\$A331* (Friday)	\$A551* (Friday)	\$A945* (Friday)	\$A1575*
<span style="color: blue;">■</span> Mid season	-	\$A394* (Friday)	\$A630* (Friday)	\$A1102* (Friday)	\$A1890*
<span style="color: orange;">■</span> High season	-	-	\$A709* (Friday)	\$A1102* (Friday)	\$A2047*
<span style="color: pink;">■</span> Festive specials	-	\$A551*	\$A709* (Friday)	\$A1260*	\$A2520*

(Check-in day)

[Book now](#)

Booking conditions

• Reservation

- Payment made upon reservation : 25% of rental sum
- Payment balance : 1 month before the stay
- Deposit required : \$A315\*

• rentals

- Service charges to be added
- Day tax included
- Cleaning charge levy on departure : \$A79\*
- Anticipated supplement for :  
- firewood

Accepted methods of payment

- Bank transfer (wire) • Cash

[▶ Book now](#)

[▶ Contact the owner](#)

Contact directly the property owners

[www.au.iha.com](http://www.au.iha.com)

Advert No.

10164

[>> Book now <<](#)

Contact

Spoken languages



\* Converted at the rate indicated : €100 = \$116.85 = £89 = \$A157.48

Advert No. 10164

[www.au.iha.com](http://www.au.iha.com)



[>> HOLIDAY LETTINGS](#)

[BOOK DIRECT WITH THE OWNERS](#)