

# Gîte - Self Catering Bohan "Gîte le Bohan"

The cottage consists of 2 cottages for 4/6 persons: the forest and the refuge.



Gîte - Self Catering - Charming Stone-Built House, semi-detached, 1 floor, separate entrance, in a(an) Hamlet

Setting : quiet, rural

Capacity : from 2 to 6 person(s)

Bedroom(s) : 2

Room(s) : 4



Eurogîtes  
Meublés de Tourisme (2 stars)



Theme breaks  
Hikes

Bohan - Province of Namur - Walloon

Belgium

Reservation : +32 (0) 82713160 (Belgium)

Advert No. 10429

www.au.ih.com



>> HOLIDAY LETTINGS

BOOK DIRECT WITH THE OWNERS

## Gîte - Self Catering



Gîte - Self Catering - Charming Stone-Built House, semi-detached, 1 floor, separate entrance, in a(an) Hamlet

- **Ideal for family, sporty types**
- **View :** panoramic, country side, forest, river, village, square
- **Setting :** quiet, rural
- **Exposure :** South

" The forest: kitchen in oak and staircase turning living. The refuge: white kitchen and straight staircase in the lobby. Terrace with table, garden with reserve sheds wood, chairs, vacuum cleaner and needed cleaning. Parking for 2 cars. Bathroom: WC, shower-bath and washbasin upstairs + 1 toilet on the ground floor. 2 bedrooms with 2 bed of 140 cm. "

## Assets

- **Parking :**  
Parking uncovered : 2 off road.
- **baby equipment :**  
Baby chair



Sleeps - bed(s)

## Surroundings & location



Countryside



Fishing

" Located in the heart of a very touristic village members Ardennes. Many nearby activities: fishing, descent of the Semois by Kayak, hiking, restaurants and Proxy Delhaize, butchers, bakeries and pastry shops, bookstore, corner post, taverns and clothing store. "

### Leisure

- **Leisure activities less than 20 km / 12 miles :**

Canoeing, pathway, coastal/forest paths, hiking, mountain bike (path), hunting, fishing, angling

- **Attractions and relaxation :**

Restaurant, nature reserve, art gallery

### Surroundings

- **Locality :**

River 200m  
Forest <50m

- **Amenities :**

Village centre 200m  
Bus stop / bus station 200m  
Bike/mountain bike hire  
Breadshop  
Caterer  
Local shops  
Supermarket  
Hairdressing salon  
Post office  
Doctor



Equipment at the guest's disposal



view from the sitting-room



kitchen

## Interior

- **Receive up to :**

from 2 to 6 person(s) (4 adults, 2 children)

- **Interior layout :**

4 Room(s), 2 bedroom(s), 1 bathroom, 2 WC, living room, sitting room, shared kitchen facilities, tv room

- **Sleeps - bed(s) :**

2 double bed(s), 1 sofa bed(s) 2 pers

- **Guest facilities :**

Fireplace, T.V., DVD player, board games, book collection, wardrobe, cupboard, Hanging wardrobe, radio alarmclock, hair dryer, fly screens, electric heating, wood-burning stove, Double glazed

- **Appliances :**

Crockery/cuttlery, kitchen utensils, electric coffee maker, electric kettle, toaster, juicer, electric raclette set, electric hobs, oven, micro-wave oven, extractor hood, refridgerator, dish washer, washing machine, clothes dryer, vacuum cleaner, iron, ironing board

## Exterior

- **Outside accommodation :**

Terrace, garden shed

- **Outside setting :**

Woods, river

- **Outside amenities :**

BBQ, garden table(s), 6 garden seat(s), trolley on wheels, parasol



Kitchen Area

## Services

- **Washing :**

Blanket(s), Quilt(s), Pillows

- **House :**

Cleaning on departure supplement (+\$A79\*)

## For your guidance

- **For your guidance**

Children welcome

Personal transport advisable



view from the bedroom

Photo album - 1



Sleeps - bed(s)



view from the sitting-room



Equipment at the guest's disposal



kitchen



view from the bedroom

Photo album - 2



Kitchen Area



Interior layout



wood-burning stove



Outside at the guests disposal



Exterior amenities at guests disposal



Exterior facilities at guests disposal

[Theme breaks](#)

Hikes

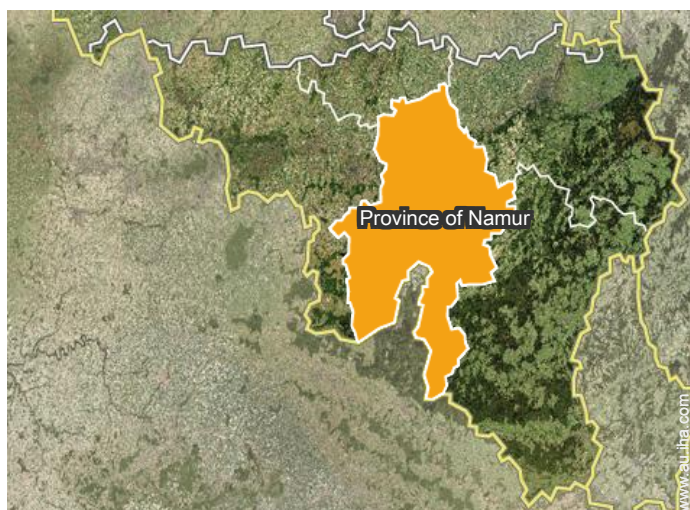
Indicated duration : 2 hours

Level : **Accompanied**

Included in the price of the accommodation

Weekends only

## Location



## Location & Access

" E 411, exit 22 (Beauraing) or 23 (Wellin) Gedinne station. "



GPS coordinates in degrees, minutes, seconds: Latitude 49°51'54"N - Longitude 4°53'13"E (Dwelling)

### Address

→ Rue de la Seigneurie 54  
5550 Bohan

### • Motorway (junction) sortie 23 Wellin

→ Gedinne, Province of Namur, Walloon,  
Belgium

→ Distance : 37km  
→ Time : 30'

### • Motorway (junction) sortie 22 Beauraing

→ Houdremont, Province of Namur,  
Walloon, Belgium

→ Distance : 51km  
→ Time : 50'

• Vresse-sur-Semois : (7,5km)

## Contact

Spoken  
languages



Availability calendar - from : january 2019

Jan	Tu	W	Th	F	Sa	Su	M	Tu	W	Th	F	Sa	Su	M	Tu	W	Th	F	Sa	Su	M	Tu	W	Th							
2019	1	2	3	4	5	6	7	8	9	10	11	12	13	14	15	16	17	18	19	20	21	22	23	24	25	26	27	28	29	30	31
																			-	-	-	-	-	-	-	-	-	-	-	-	

Feb	F	Sa	Su	M	Tu	W	Th	F	Sa	Su	M	Tu	W	Th	F	Sa	Su	M	Tu	W	Th								
2019	1	2	3	4	5	6	7	8	9	10	11	12	13	14	15	16	17	18	19	20	21	22	23	24	25	26	27	28	
	-	-	-	-	-	-	-	-	-	-	-	-	-	-	-	-	-	-	-	-	-	-	-	-	-	-	-	-	-

Mar	F	Sa	Su	M	Tu	W	Th	F	Sa	Su	M	Tu	W	Th	F	Sa	Su	M	Tu	W	Th	F	Sa	Su							
2019	1	2	3	4	5	6	7	8	9	10	11	12	13	14	15	16	17	18	19	20	21	22	23	24	25	26	27	28	29	30	31
	-	-	-	-	-	-	-	-	-	-	-	-	-	-	-	-	-	-	-	-	-	-	-	-	-	-	-	-	-	-	

Apr	M	Tu	W	Th	F	Sa	Su	M	Tu	W	Th	F	Sa	Su	M	Tu	W	Th	F	Sa	Su	M	Tu							
2019	1	2	3	4	5	6	7	8	9	10	11	12	13	14	15	16	17	18	19	20	21	22	23	24	25	26	27	28	29	30
	-	-	-	-	-	-	-	-	-	-	-	-	-	-	-	-	-	-	-	-	-	-	-	-	-	-	-	-	-	-

May	W	Th	F	Sa	Su	M	Tu	W	Th	F	Sa	Su	M	Tu	W	Th	F	Sa	Su	M	Tu	W	Th	F							
2019	1	2	3	4	5	6	7	8	9	10	11	12	13	14	15	16	17	18	19	20	21	22	23	24	25	26	27	28	29	30	31
	-	-	-	-	-	-	-	-	-	-	-	-	-	-	-	-	-	-	-	-	-	-	-	-	-	-	-	-	-	-	

June	Sa	Su	M	Tu	W	Th	F	Sa	Su	M	Tu	W	Th	F	Sa	Su	M	Tu	W	Th	F	Sa	Su							
2019	1	2	3	4	5	6	7	8	9	10	11	12	13	14	15	16	17	18	19	20	21	22	23	24	25	26	27	28	29	30
	-	-	-	-	-	-	-	-	-	-	-	-	-	-	-	-	-	-	-	-	-	-	-	-	-	-	-	-	-	-

Jul	M	Tu	W	Th	F	Sa	Su	M	Tu	W	Th	F	Sa	Su	M	Tu	W	Th	F	Sa	Su	M	Tu	W							
2019	1	2	3	4	5	6	7	8	9	10	11	12	13	14	15	16	17	18	19	20	21	22	23	24	25	26	27	28	29	30	31
	-	-	-	-	-	-	-	-	-	-	-	-	-	-	-	-	-	-	-	-	-	-	-	-	-	-	-	-	-	-	

Aug	Th	F	Sa	Su	M	Tu	W	Th	F	Sa	Su	M	Tu	W	Th	F	Sa	Su	M	Tu	W	Th	F	Sa							
2019	1	2	3	4	5	6	7	8	9	10	11	12	13	14	15	16	17	18	19	20	21	22	23	24	25	26	27	28	29	30	31
	-	-	-	-	-	-	-	-	-	-	-	-	-	-	-	-	-	-	-	-	-	-	-	-	-	-	-	-	-	-	

Sep	Su	M	Tu	W	Th	F	Sa	Su	M	Tu	W	Th	F	Sa	Su	M	Tu	W	Th	F	Sa	Su	M							
2019	1	2	3	4	5	6	7	8	9	10	11	12	13	14	15	16	17	18	19	20	21	22	23	24	25	26	27	28	29	30
	-	-	-	-	-	-	-	-	-	-	-	-	-	-	-	-	-	-	-	-	-	-	-	-	-	-	-	-	-	-

Oct	Tu	W	Th	F	Sa	Su	M	Tu	W	Th	F	Sa	Su	M	Tu	W	Th	F	Sa	Su	M	Tu	W	Th							
2019	1	2	3	4	5	6	7	8	9	10	11	12	13	14	15	16	17	18	19	20	21	22	23	24	25	26	27	28	29	30	31
	-	-	-	-	-	-	-	-	-	-	-	-	-	-	-	-	-	-	-	-	-	-	-	-	-	-	-	-	-	-	



Gîte - Self Catering  
Bohan - Belgium  
"Gîte le Bohan"

9

[Book now](#)






Availability calendar - from : october 2019

Nov	F	Sa	Su	M	Tu	W	Th	F	Sa	Su	M	Tu	W	Th	F	Sa	Su	M	Tu	W	Th	F	Sa							
2019	1	2	3	4	5	6	7	8	9	10	11	12	13	14	15	16	17	18	19	20	21	22	23	24	25	26	27	28	29	30
	-	-	-	-	-	-	-	-	-	-	-	-	-	-	-	-	-	-	-	-	-	-	-	-	-	-	-	-	-	

Dec	Su	M	Tu	W	Th	F	Sa	Su	M	Tu	W	Th	F	Sa	Su	M	Tu	W	Th	F	Sa	Su	M	Tu							
2019	1	2	3	4	5	6	7	8	9	10	11	12	13	14	15	16	17	18	19	20	21	22	23	24	25	26	27	28	29	30	31
	-	-	-	-	-	-	-	-	-	-	-	-	-	-	-	-	-	-	-	-	-	-	-	-	-	-	-	-	-	-	

Month : Next >>

Rental rates - Gîte - Self Catering - Charming Stone-Built House - from 2 to 6 Person(s)

Rates	Night	Weekend	week	2 weeks	Month
 Low season	-	\$A173*	\$A307*	\$A583*	\$A1039*
 Mid season	-	\$A252*	\$A378*	\$A709*	\$A1276*
 High season	-	\$A283*	\$A472*	\$A898*	\$A1567*
 Festive specials	-	\$A307*	\$A504*	-	-
 Promotional period	-	-	\$A441* (Saturday)	-	-

(Check-in day)

[Book now](#)



Equipment at the guest's disposal



kitchen



view from the bedroom



Sleeps - bed(s)



view from the sitting-room

### Booking conditions

#### • Reservation

- Payment made upon reservation : 25% of rental sum
- Payment balance : 1 month before the stay
- Deposit required : \$A315\*

#### • rentals

- Service charges to be added
- Day tax in addition
- Cleaning charge on departure included
- Anticipated supplement for :
  - firewood

### Accepted methods of payment

- Bank transfer (wire) • Cash

► [Book now](#)

► [Contact the owner](#)

Contact directly the property owners

[www.au.ih.com](http://www.au.ih.com)

Advert No.

10429

>> [Book now](#) <<

### Contact

Spoken languages



\* Converted at the rate indicated : €100 = \$116.85 = £89 = \$A157.48

Advert No. 10429

[www.au.ih.com](http://www.au.ih.com)

