

# Gîte - Self Catering Quercy "LANGELERIE"



Gîte - Self Catering - Charming  
Typical House, detached, 2 floors,  
separate entrance

Setting : peaceful, historical

Capacity : from 1 to 7 person(s)  
Bedroom(s) : 3  
Room(s) : 7



Gîtes de France (3 ears)  
Meublés de Tourisme (3 stars)

Bretenoux - Lot (46) - Midi-Pyrénées

France

Reservation : +33 (0) 5 65 10 91 61 (France)

Advert No. 38496

www.au.ihha.com



>> HOLIDAY LETTINGS

BOOK DIRECT WITH THE OWNERS

## Gîte - Self Catering



Gîte - Self Catering - Charming Typical House, detached, 2 floors, separate entrance

- **Ideal for family, all age groups**
- **View** : panoramic, dominant, country side, swimming pool, fantastic sunset, nightlights
- **Setting** : peaceful, historical
- **Exposure** : South-west

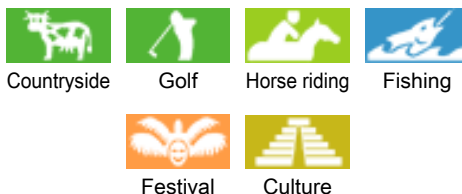
## Assets

- **Swimming pool** :  
Private swimming-pool, rectangular (length 10m, width 5m), steps in, child secure
- **Parking** :  
Parking uncovered : 2 off road.
- **Advantages** :  
Pétanque pitch
- **baby equipment** :  
Baby chair, baby changer, baby bath



Charming Typical House

## Surroundings & location



### Leisure

- **Leisure activities less than 20 km / 12 miles** :

Bathing, canoeing, golf, tennis, riding school, pony club, pathway, coastal/forest paths, hiking, climbing, mountain bike (path), boat trips, horse-drawn carriage, horse trekking, donkey rides, mini-golf, ATV/Quad Bike, go-karting, ten-pin bowling, paintball, hunting, big game hunting, acrobatics, fishing, angling, pétanque pitch

- **Supervised** :

Tennis school, riding school

- **Attractions and relaxation** :

Bar/pub, discotheque, restaurant, cinema, open air summer cinema, park and garden, leisure park, zoo/animal park, nature reserve, exhibition centre, art gallery, historical site, museum, summer theatre, opera house, festivals, antiques & bric-a-brac, local craftshop, cellar and wine tasting, casino, thermal baths, beauticians, fitness centre, Bio farm

### Surroundings

- **Locality** :

Ice skating rink 50km  
Public swimming pool 5km  
Public tennis court 5km  
9 hole golf course 4km  
Waterfall 5km  
Cliff 5km  
River 2km  
Stretch of water 7,5km  
Lake 15km  
Forest 5km  
Mountain range 40km

- **Amenities** :

Village centre  
Bike/mountain bike hire 5km  
Car rental 50km  
Breadshop 5km  
Caterer 5km  
Local shops 5km  
Supermarket 4km  
Hairdressing salon 4km  
Internet cafe 5km  
Post office 5km  
Bank 5km  
Cash point 5km  
Chemist 5km  
Doctor 5km  
Nurse 5km  
Hospital 5km



view from the terrace



Swimming pool



kitchen

## Interior

- **Receive up to :**

from 1 to 7 person(s) (7 adults)

- **Liveable floor area :**

100m<sup>2</sup>

- **Interior layout :**

7 Room(s), 3 bedroom(s), 1 bathroom, 1 shower room, 2 WC, living room 28m<sup>2</sup>, sitting room, separate kitchen, dining room, cosy nook, tv room, laundry room

- **Sleeps - bed(s) :**

1 sofa bed(s) 2 pers, 1 single bed(s), 3 twin beds (standard), 1 baby cot(s)

- **Guest facilities :**

Fireplace, T.V., board games, t.v points, telephone, internet access, high speed internet access, wifi, wardrobe, cupboard, Hanging wardrobe, hair dryer, mobile cool air fan, central heating, electric heating, Skylights, Curtains, Blinds, Double glazed, Rolling shutters

- **Appliances :**

Crockery/cuttlery, kitchen utensils, cafetiere, electric coffee maker, electric espresso coffee maker, electric kettle, toaster, juicer, food processor, crepe maker, electric raclette set, fondue set, gas cooker, oven, micro-wave oven, extractor hood, refridgerator, freezer, dish washer, washing machine, clothes dryer, vacuum cleaner, iron, ironing board

## Exterior

- **Ground surface :**

1500m<sup>2</sup>

- **Outside accommodation :**

Terrace

- **Outside setting :**

Garden > 1000m<sup>2</sup>, lawn > 1000m<sup>2</sup>

- **Outside amenities :**

Summer living area, BBQ, garden table(s), 7 garden seat(s), parasol, garden seated area, 5 chaise(s) longue(s), 3 rocking chair(s), outside shower facilities



cosy nook

## Services

- **Washing :**

Sheets, Towels supplement (+\$A11\*), Linen supplement (+\$A3\*), Blanket(s), Quilt(s), Pillows

- **House :**

Cleaning on departure supplement (+\$A126\*), Garden/swimming pool maintenance, Parking

## For your guidance

- **For your guidance**

Children welcome

No pet allowed

Present on site : pets, equine animals

Water : hot/cold

Local voltage supply : 220V / 60Hz

Electricity supply : mains



dining room

Photo album - 1



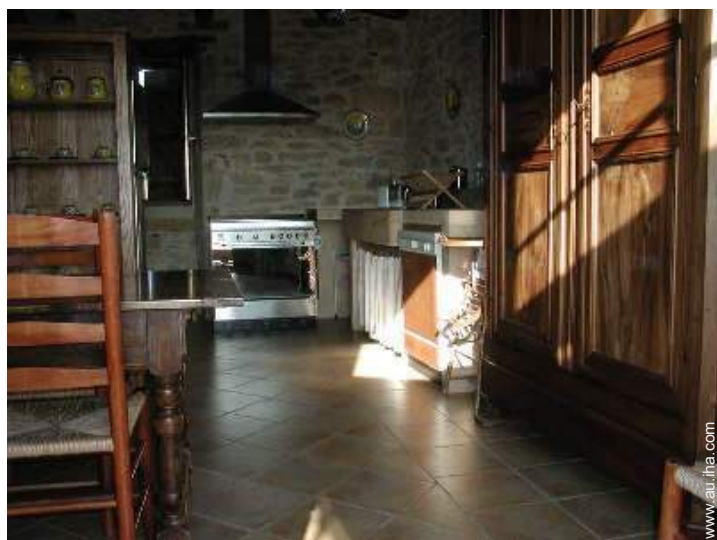
Charming Typical House



Swimming pool



view from the terrace



kitchen



dining room

Photo album - 2



cosy nook

tv room

bedroom



bedroom

bedroom

bedroom



terrace

bathroom

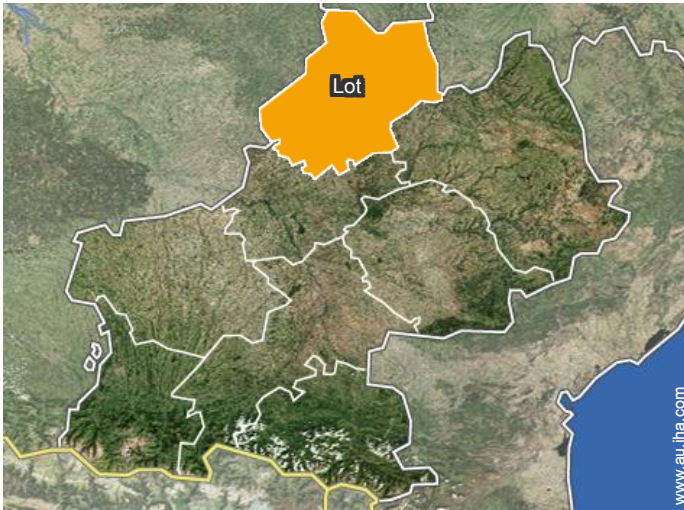
bathroom



shower room

shower room

## Location



## Location & Access



GPS coordinates in degrees, minutes, seconds: Latitude 44°53'40"N - Longitude 1°50'42"E ([Dwelling](#))

### Address

→ LANGELERIE  
ST MICHEL LOUBEJOU  
46130 Bretenoux

• Figeac : (40km)

### • Train station Biars sur Cère Bretenoux

→ Biars-sur-Cère, Lot, Midi-Pyrénées,  
France  
→ Distance : 5km  
→ Time : 10'

### • Motorway (junction) A20

→ Brive-la-Gaillarde, Corrèze, Limousin,  
France  
→ Distance : 50km  
→ Time : 1h

- Saint-Michel-Loubéjou : (5km)
- Saint-Céré : (5km)

## Contact

Spoken  
languages



Availability calendar - from : september 2019

Sep	Su	M	Tu	W	Th	F	Sa	Su	M	Tu	W	Th	F	Sa	Su	M	Tu	W	Th	F	Sa	Su	M							
2019	1	2	3	4	5	6	7	8	9	10	11	12	13	14	15	16	17	18	19	20	21	22	23	24	25	26	27	28	29	30
															-	-	-	-	-	-	-	-	-	-	-	-	-	-	-	

Oct	Tu	W	Th	F	Sa	Su	M	Tu	W	Th	F	Sa	Su	M	Tu	W	Th	F	Sa	Su	M	Tu	W	Th							
2019	1	2	3	4	5	6	7	8	9	10	11	12	13	14	15	16	17	18	19	20	21	22	23	24	25	26	27	28	29	30	31
	-	-	-	-	-	-	-	-	-	-	-	-	-	-	-	-	-	-	-	-	-	-	-	-	-	-	-	-	-	-	

Nov	F	Sa	Su	M	Tu	W	Th	F	Sa	Su	M	Tu	W	Th	F	Sa	Su	M	Tu	W	Th	F	Sa							
2019	1	2	3	4	5	6	7	8	9	10	11	12	13	14	15	16	17	18	19	20	21	22	23	24	25	26	27	28	29	30
	-	-	-	-	-	-	-	-	-	-	-	-	-	-	-	-	-	-	-	-	-	-	-	-	-	-	-	-	-	-

Dec	Su	M	Tu	W	Th	F	Sa	Su	M	Tu	W	Th	F	Sa	Su	M	Tu	W	Th	F	Sa	Su	M	Tu							
2019	1	2	3	4	5	6	7	8	9	10	11	12	13	14	15	16	17	18	19	20	21	22	23	24	25	26	27	28	29	30	31
	-	-	-	-	-	-	-	-	-	-	-	-	-	-	-	-	-	-	-	-	-	-	-	-	-	-	-	-	-	-	

Jan	W	Th	F	Sa	Su	M	Tu	W	Th	F	Sa	Su	M	Tu	W	Th	F	Sa	Su	M	Tu	W	Th	F							
2020	1	2	3	4	5	6	7	8	9	10	11	12	13	14	15	16	17	18	19	20	21	22	23	24	25	26	27	28	29	30	31
	-	-	-	-	-	-	-	-	-	-	-	-	-	-	-	-	-	-	-	-	-	-	-	-	-	-	-	-	-	-	

Feb	Sa	Su	M	Tu	W	Th	F	Sa	Su	M	Tu	W	Th	F	Sa	Su	M	Tu	W	Th	F	Sa							
2020	1	2	3	4	5	6	7	8	9	10	11	12	13	14	15	16	17	18	19	20	21	22	23	24	25	26	27	28	29
	-	-	-	-	-	-	-	-	-	-	-	-	-	-	-	-	-	-	-	-	-	-	-	-	-	-	-	-	-

Mar	Su	M	Tu	W	Th	F	Sa	Su	M	Tu	W	Th	F	Sa	Su	M	Tu	W	Th	F	Sa	Su	M	Tu							
2020	1	2	3	4	5	6	7	8	9	10	11	12	13	14	15	16	17	18	19	20	21	22	23	24	25	26	27	28	29	30	31
	-	-	-	-	-	-	-	-	-	-	-	-	-	-	-	-	-	-	-	-	-	-	-	-	-	-	-	-	-	-	

Apr	W	Th	F	Sa	Su	M	Tu	W	Th	F	Sa	Su	M	Tu	W	Th	F	Sa	Su	M	Tu	W	Th							
2020	1	2	3	4	5	6	7	8	9	10	11	12	13	14	15	16	17	18	19	20	21	22	23	24	25	26	27	28	29	30
	-	-	-	-	-	-	-	-	-	-	-	-	-	-	-	-	-	-	-	-	-	-	-	-	-	-	-	-	-	-

May	F	Sa	Su	M	Tu	W	Th	F	Sa	Su	M	Tu	W	Th	F	Sa	Su	M	Tu	W	Th	F	Sa	Su							
2020	1	2	3	4	5	6	7	8	9	10	11	12	13	14	15	16	17	18	19	20	21	22	23	24	25	26	27	28	29	30	31
	-	-	-	-	-	-	-	-	-	-	-	-	-	-	-	-	-	-	-	-	-	-	-	-	-	-	-	-	-	-	

June	M	Tu	W	Th	F	Sa	Su	M	Tu	W	Th	F	Sa	Su	M	Tu	W	Th	F	Sa	Su	M	Tu							
2020	1	2	3	4	5	6	7	8	9	10	11	12	13	14	15	16	17	18	19	20	21	22	23	24	25	26	27	28	29	30
	-	-	-	-	-	-	-	-	-	-	-	-	-	-	-	-	-	-	-	-	-	-	-	-	-	-	-	-	-	-

Reserved
  Mid season
  Low season

Availability calendar - from : june 2020

Jul	W	Th	F	Sa	Su	M	Tu	W	Th	F	Sa	Su	M	Tu	W	Th	F	Sa	Su	M	Tu	W	Th	F	
2020	1	2	3	4	5	6	7	8	9	10	11	12	13	14	15	16	17	18	19	20	21	22	23	24	25
	-	-	-	-	-	-	-	-	-	-	-	-	-	-	-	-	-	-	-	-	-	-	-	-	

Aug	Sa	Su	M	Tu	W	Th	F	Sa	Su	M	Tu	W	Th	F	Sa	Su	M	Tu	W	Th	F	Sa	Su	M
2020	1	2	3	4	5	6	7	8	9	10	11	12	13	14	15	16	17	18	19	20	21	22	23	24
	-	-	-	-	-	-	-	-	-	-	-	-	-	-	-	-	-	-	-	-	-	-	-	-

Reserved Mid season Low season

[Month : Next >>](#)

Rental rates - Gîte - Self Catering - Charming Typical House - from 1 to 7 Person(s)

Rates	Night	Weekend	week	2 weeks	Month
Low season	\$A102*	\$A283* (Friday)	\$A709*	-	-
Mid season	\$A124*	\$A283* (Friday)	\$A866*	-	-
High season	-	-	\$A2283* (Saturday)	-	-
Promotional period	-	-	\$A1968* (Saturday)	-	-

(Check-in day)

[Book now](#)

Booking conditions

- **Reservation**
  - Payment made upon reservation : 25% of rental sum
  - Payment balance : 1 month before the stay
  - Deposit required : \$A787\*
- **rentals**
  - Service charges to be added
  - Day tax in addition
  - Cleaning charge levy on departure : \$A126\*
  - Anticipated supplement for : - firewood

Accepted methods of payment

- Bank transfer (wire) • Cheque • Bankers draft • Holiday voucher

[▶ Book now](#)

[▶ Contact the owner](#)

Contact directly the property owners

[www.au.ihaholidayads.com](http://www.au.ihaholidayads.com)  
**Advert No.**  
**38496**  
 >> [Book now](#) <<

Contact

Spoken languages



\* Converted at the rate indicated : €100 = \$110 = £91 = \$A157.48

Advert No. 38496

[www.au.ihaholidayads.com](http://www.au.ihaholidayads.com)

