

Gîte - Self Catering Champdray "Les Gites de l'Étang"

House of luxury 5 star on Champdray plateau in the Vosges



Gîte - Self Catering - Charming
Main Farm House, detached, 3 floors,
separate entrance, in a(an) Luxury
Property

Setting : exclusive, luxurious

Capacity : from 2 to 18 person(s)

Bedroom(s) : 9

Room(s) : 17



Clé vacances (4 keys)
Meublés de Tourisme (5 stars)

Champdray - Vosges (88) - Lorraine

France

Reservation : +33 (0) 3 29 56 40 39 (France)

Advert No. 56634

www.au.ihha.com



>> HOLIDAY LETTINGS

BOOK DIRECT WITH THE OWNERS

Gîte - Self Catering



Gîte - Self Catering - Charming Main Farm House, detached, 3 floors, separate entrance, in a(an) Luxury Property

- **Ideal for all age groups, seminar**
- **View :** panoramic, dominant, mountain, country side, swimming pool, village
- **Setting :** exclusive, luxurious
- **Exposure :** South

" Our easily accessible Gîtes, our cottages welcome you all year round in the town of Champdray nestled on a plateau in the Natura 2000 network. In an exceptional location, at the crossroads of landscapes, you get a particularly healthy environment throughout the year. At the heart of an authentic closed Vosges to the end of the 18th century, renovated with taste, passion, and in perfect harmony with nature: enjoy the privacy and comfort to relax "

Assets

- **Swimming pool :**
Private swimming-pool, rectangular (length 5,50m, width 2,50m), heated, inside, wave machine, step ladder, child secure (open from '01 january' till '31 december')
- **Parking :**
Parking uncovered : 10 off road.
- **Advantages :**
Ski locker, sauna, steam bath, massage table, billiard table, table football, ping-pong table, 10 ping-pong bats, croquet, volley ball court, pétanque pitch, 10 pétanque set(s)
- **baby equipment :**
Baby chair, pushchair

Surroundings & location



Mountain

" On the site: nature: enjoy the peace and the extent of the land to relax: on a 1.2 hectare field, where the flora and fauna abound (Walnut, Apple tree, spruce, and a lime), two cottages facing the pond, the 3rd cottage offers a panoramic view on the Valley and fields (at night, you might have the chance to spot deer or other game in the surroundings). seasonal vegetables. Fresh eggs from the chicken coop, and home-made jams are also available to all customers. Initially the cottages, many pedestrian walks or mountain bike available to you for the discovery of the surrounding countryside (with or without chaperones). "

Leisure

- **Leisure activities less than 20 km / 12 miles :**

Alpine skiing, cross-country skiing, off-piste skiing, ski-trekking, Télémart skiing, snowboarding, luge (run), ice-skating, skidoo, dogsledding, bathing, pedalo, sailing, golf, tennis, riding school, pony club, pathway, coastal/forest paths, hiking, climbing, mountain bike (path), paragliding, horse trekking, mini-golf, skate board (ramps), ATV/Quad Bike, ten-pin bowling, volleyball, fishing

- **Supervised :**

Ski school, childs ski area, sailing school, riding school

Surroundings

- **Locality :**
Ski slopes 10km
Ski lifts 10km
Ice skating rink 15km
9 hole golf course 20km
18 hole golf course 20km
Waterfall 5km
Cliff 10km
River 10km
Stretch of water 50m
Lake 15km
Forest 100m
Mountain range 100m



large bedroom



View from the property



Winter

Exterior

- **Outside accommodation :**

Terrace, covered terrace

- **Outside setting :**

Private courtyard, garden, lawn, orchard, kitchen garden, natural pools

- **Outside amenities :**

Summer living area, BBQ, gas BBQ, garden table(s), 20 garden seat(s), arbour, parasol, garden seated area, 10 chaise(s) longue(s), 10 sun recliner(s), sun lounger, child's swing, sand pit



façade

Interior

- **Receive up to :**

from 2 to 18 person(s)

- **Interior layout :**

17 Room(s), 9 bedroom(s), 9 bathroom, 8 shower room, 10 WC, living room, sitting room, american style kitchen, dining room, cosy nook, mezzanine, tv room, reading room, games room, reception hall, study, laundry room, patio

- **Sleeps - bed(s) :**

4 double bed(s), 1 futon 2 pers, 10 single bed(s), 2 baby cot(s), 1 possible extra bed(s)

- **Guest facilities :**

T.V., hi-fi system, DVD player, board games, book collection, film collection, t.v points, internet access, wifi, wardrobe, cupboard, hair dryer, heated towel rail, power shower, fly screens, mobile cool air fan, central heating, wood-burning stove, Glazed in area, Curtains, Blinds, Double glazed, Rolling shutters

- **Appliances :**

Crockery/cutlery, kitchen utensils, cafetiere, electric coffee maker, electric espresso coffee maker, electric kettle, toaster, juicer, food processor, crepe maker, electric raclette set, fondue set, meat grill, electric cooker, electric hobs, oven, mini-oven, micro-wave oven, extractor hood, refrigerator, freezer, dish washer, washing machine, clothes dryer, vacuum cleaner, iron, ironing board



large bedroom

Services

- **Washing :**

Sheets (1 X / per week), Towels (1 X / per week), Linen (1 X / per week), Quilt(s) (1 X / per week), Pillows (1 X / per week)

- **House :**

Cleaning (1 X / per week), Cleaning on departure, Garden/swimming pool maintenance (1 X / per week), Snow clearance (7 X / per week), Parking, Airport transfers supplement

- **Personnel :**

Staff, Chef(s) supplement, Baby sitting supplement, Beauty treatments, Massage supplement, Guide supplement, Entertainer supplement

- **Restauration :**

Breakfast supplement, Guest table supplement, BBQ meal supplement, Half board supplement, Full board supplement, Locally produced meals supplement, Picnic basket supplement, Themed evening supplement

For your guidance

- **For your guidance**

Children welcome
Pets accepted under certain conditions (ask the owner)
Present on site : pets, farm animals, wild animals
Non smoking rental, personal transport advisable
Water : hot/cold
Electricity supply : mains

- **Handicapped people welcome**

Wheelchair access

Floor plan

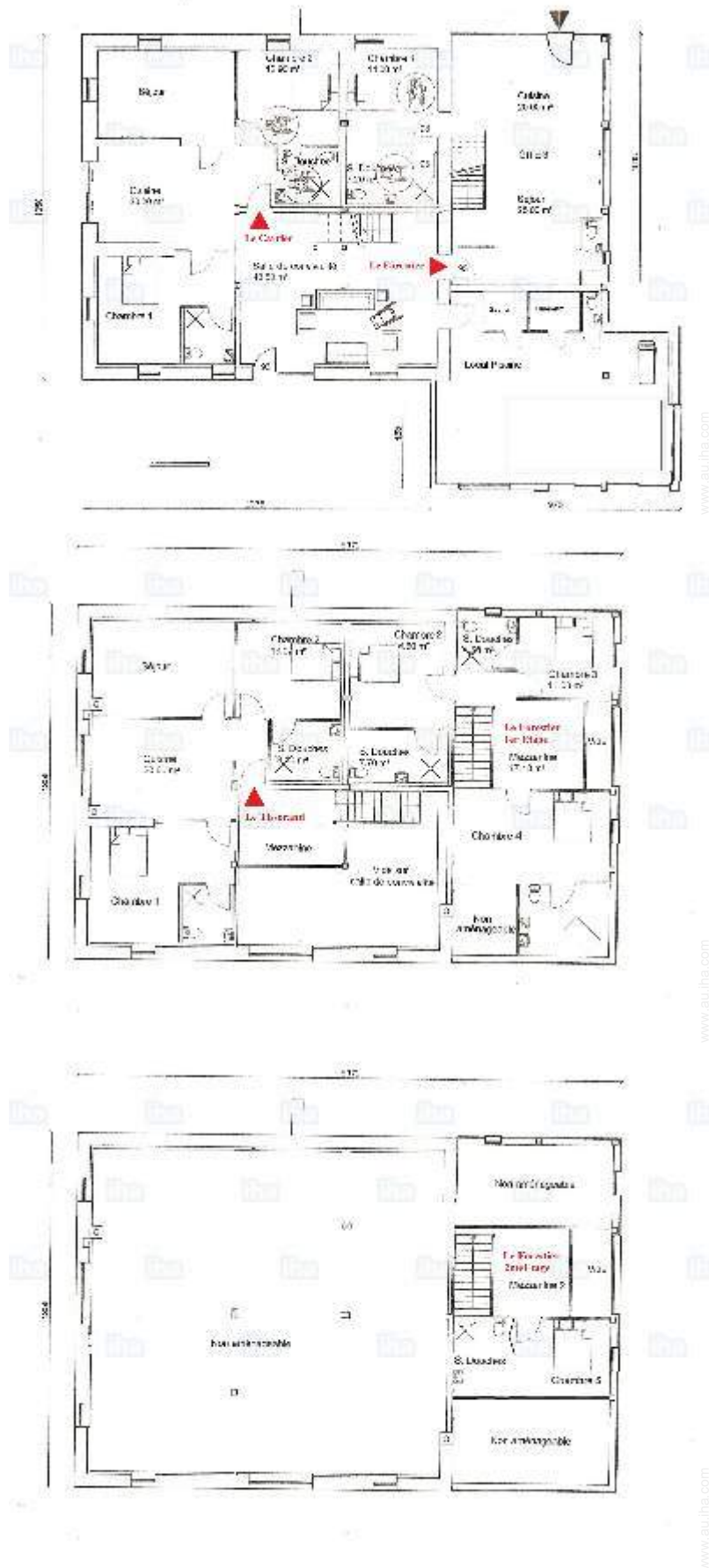


Photo album - 1



View from the property



large bedroom



Winter



large bedroom



façade

Photo album - 2



american style kitchen



bedroom



master bedroom



Autumn



living room



bedroom



view from the garden/park



private courtyard



overall view

Photo album - 3



the property

Interior facilities

bathroom



façade

wave machine

Summer



Summer

Inside swimming pool

bedroom

Location



Location & Access

" Sister Champdray plateau has 750 m a 12 kms from the Pearl of the Vosges, Gérardmer "



GPS coordinates in degrees, minutes, seconds: Latitude 48°8'4"N - Longitude 6°45'44"E (Dwelling)

Address

→ 1 rue de Jonfaing
88640 Champdray

• Train station Remiremont

→ Remiremont, Vosges, Lorraine, France
→ Time : 15'

• Motorway (junction) N57

→ Épinal, Vosges, Lorraine, France
→ Distance : 30km
→ Time : 30'

• Airport Basel/Mulhouse/Freiburg

→ Mulhouse, Upper Rhine, Alsace, France
→ Distance : 85km
→ Time : 1h30'

- Gérardmer : (12km)
- Laveline-devant-Bruyères : (5km)
- Épinal : (20km)

Contact

Spoken languages



Availability calendar - from : march 2018

Mar	Th	F	Sa	Su	M	Tu	W	Th	F	Sa	Su	M	Tu	W	Th	F	Sa	Su	M	Tu	W	Th	F	Sa	Su	M	Tu	W	Th	F	Sa
2018	1	2	3	4	5	6	7	8	9	10	11	12	13	14	15	16	17	18	19	20	21	22	23	24	25	26	27	28	29	30	31
																			-	-	-	-	-	-	-	-	-	-	-	-	-

Apr	Su	M	Tu	W	Th	F	Sa	Su	M	Tu	W	Th	F	Sa	Su	M	Tu	W	Th	F	Sa	Su	M							
2018	1	2	3	4	5	6	7	8	9	10	11	12	13	14	15	16	17	18	19	20	21	22	23	24	25	26	27	28	29	30
	-	-	-	-	-	-	-	-	-	-	-	-	-	-	-	-	-	-	-	-	-	-	-	-	-	-	-	-	-	-

May	Tu	W	Th	F	Sa	Su	M	Tu	W	Th	F	Sa	Su	M	Tu	W	Th	F	Sa	Su	M	Tu	W	Th	F	Sa	Su	M	Tu	W	Th
2018	1	2	3	4	5	6	7	8	9	10	11	12	13	14	15	16	17	18	19	20	21	22	23	24	25	26	27	28	29	30	31
	-	-	-	-	-	-	-	-	-	-	-	-	-	-	-	-	-	-	-	-	-	-	-	-	-	-	-	-	-	-	-

June	F	Sa	Su	M	Tu	W	Th	F	Sa	Su	M	Tu	W	Th	F	Sa	Su	M	Tu	W	Th	F	Sa							
2018	1	2	3	4	5	6	7	8	9	10	11	12	13	14	15	16	17	18	19	20	21	22	23	24	25	26	27	28	29	30
	-	-	-	-	-	-	-	-	-	-	-	-	-	-	-	-	-	-	-	-	-	-	-	-	-	-	-	-	-	-

Jul	Su	M	Tu	W	Th	F	Sa	Su	M	Tu	W	Th	F	Sa	Su	M	Tu	W	Th	F	Sa	Su	M	Tu	W	Th	F	Sa	Su	M	Tu
2018	1	2	3	4	5	6	7	8	9	10	11	12	13	14	15	16	17	18	19	20	21	22	23	24	25	26	27	28	29	30	31
	-	-	-	-	-	-	-	-	-	-	-	-	-	-	-	-	-	-	-	-	-	-	-	-	-	-	-	-	-	-	-

Aug	W	Th	F	Sa	Su	M	Tu	W	Th	F	Sa	Su	M	Tu	W	Th	F	Sa	Su	M	Tu	W	Th	F	Sa	Su	M	Tu	W	Th	F
2018	1	2	3	4	5	6	7	8	9	10	11	12	13	14	15	16	17	18	19	20	21	22	23	24	25	26	27	28	29	30	31
	-	-	-	-	-	-	-	-	-	-	-	-	-	-	-	-	-	-	-	-	-	-	-	-	-	-	-	-	-	-	-

Sep	Sa	Su	M	Tu	W	Th	F	Sa	Su	M	Tu	W	Th	F	Sa	Su	M	Tu	W	Th	F	Sa	Su							
2018	1	2	3	4	5	6	7	8	9	10	11	12	13	14	15	16	17	18	19	20	21	22	23	24	25	26	27	28	29	30
	-	-	-	-	-	-	-	-	-	-	-	-	-	-	-	-	-	-	-	-	-	-	-	-	-	-	-	-	-	-

Oct	M	Tu	W	Th	F	Sa	Su	M	Tu	W	Th	F	Sa	Su	M	Tu	W	Th	F	Sa	Su	M	Tu	W	Th	F	Sa	Su	M	Tu	W
2018	1	2	3	4	5	6	7	8	9	10	11	12	13	14	15	16	17	18	19	20	21	22	23	24	25	26	27	28	29	30	31
	-	-	-	-	-	-	-	-	-	-	-	-	-	-	-	-	-	-	-	-	-	-	-	-	-	-	-	-	-	-	-

Nov	Th	F	Sa	Su	M	Tu	W	Th	F	Sa	Su	M	Tu	W	Th	F	Sa	Su	M	Tu	W	Th	F	Sa	Su	M	Tu	W	Th	F
2018	1	2	3	4	5	6	7	8	9	10	11	12	13	14	15	16	17	18	19	20	21	22	23	24	25	26	27	28	29	30
	-	-	-	-	-	-	-	-	-	-	-	-	-	-	-	-	-	-	-	-	-	-	-	-	-	-	-	-	-	-

Dec	Sa	Su	M	Tu	W	Th	F	Sa	Su	M	Tu	W	Th	F	Sa	Su	M	Tu	W	Th	F	Sa	Su	M							
2018	1	2	3	4	5	6	7	8	9	10	11	12	13	14	15	16	17	18	19	20	21	22	23	24	25	26	27	28	29	30	31
	-	-	-	-	-	-	-	-	-	-	-	-	-	-	-	-	-	-	-	-	-	-	-	-	-	-	-	-	-	-	

Gîte - Self Catering
Lorraine - Champdray
"Les Gites de l'Étang"

10
[Book now](#)





Availability calendar - from : december 2018

Jan	Tu	W	Th	F	Sa	Su	M	Tu	W	Th	F	Sa	Su	M	Tu	W	Th	F	Sa	Su	M	Tu	W	Th							
2019	1	2	3	4	5	6	7	8	9	10	11	12	13	14	15	16	17	18	19	20	21	22	23	24	25	26	27	28	29	30	31

Feb	F	Sa	Su	M	Tu	W	Th	F	Sa	Su	M	Tu	W	Th	F	Sa	Su	M	Tu	W	Th							
2019	1	2	3	4	5	6	7	8	9	10	11	12	13	14	15	16	17	18	19	20	21	22	23	24	25	26	27	28

[Month : Next >>](#)

Rental rates - Gîte - Self Catering - Charming Main Farm House - from 2 to 18 Person(s)

Rates	Night	Weekend	week	2 weeks	Month
 Low season	-	\$A2592* (Friday)	\$A3141*	-	-
 Mid season	-	\$A2592* (Friday)	\$A3534*	-	-
 High season	-	-	\$A4712*	-	-
 Festive specials	-	\$A2592* (Friday)	\$A5733*	-	-

(Check-in day)

[Book now](#)

Booking conditions

• Reservation

- Payment made upon reservation : 30% of rental sum
- Payment balance : 1 month before the stay
- Deposit required : \$A785*

• rentals

- Service charges included
- Day tax in addition
- Cleaning charge on departure included

[▶ Book now](#)

[▶ Contact the owner](#)

Accepted methods of payment

- International Money Order
- Bank transfer (wire)
- Cheque
- Bankers draft
- Cash

Contact directly the property owners

www.au.ih.com

Advert No.

56634

[>> Book now <<](#)

Contact

Spoken languages



* Converted at the rate indicated : €100 = \$123.46 = £88.94 = \$A157.07

Advert No. 56634

www.au.ih.com

