

# Gîte - Self Catering Ferragudo "Casa Moinho"

Ferragudo is an idyllic fishing village with individual tourism and 4 beautiful beaches of the Barlavento in walking distance.



Gîte - Self Catering - House, semi-detached, 2 floors, separate entrance, in a(an) Private property

Setting : pleasant, suitable for a relaxing break

Capacity : from 1 to 6 person(s)

Bedroom(s) : 2

Room(s) : 3



Theme breaks  
Family Holidays  
Holidays with Dog

## Ferragudo - Algarve

### Portugal

Advert No. 52717

[www.au.ihaholidayads.com](http://www.au.ihaholidayads.com)



>> HOLIDAY LETTINGS

BOOK DIRECT WITH THE OWNERS

## Gîte - Self Catering



Gîte - Self Catering - House, semi-detached, 2 floors, separate entrance, in a (an) Private property

- **Ideal for family, all age groups**
- **View :** panoramic, sea/ocean, garden/park, river, village, rooftop
- **Setting :** pleasant, suitable for a relaxing break
- **Exposure :** South

" Terraced house in a small village on the highest point of the old village center of Ferragudo, with a beautiful garden and terrace to the south as well as a further roof terrace. An awning and sunshades offer shade, a grill can be used for BBQ evenings on the terrace. The house is suitable for self-catering and offers WLAN, German TV and a DVD player. For the Winterabende are enough electric heaters as well as the cozy fireplace available. "

## Assets

- **Parking :**  
Parking uncovered : 1 reserved bay.



tv room

## Surroundings & location



Seaside



Golf



Fishing

" Ferragudo is located on the estuary of the Rio Arade, within 5-15 minute walk to reach the 4 beautiful bays of Felsalgarve to Ferragudo. The village offers a number of restaurants and Cafés in addition to small food shops and a market Hall, the Central village square with some Cafés is located directly below the House. "

### Leisure

- **Leisure activities less than 20 km / 12 miles :**

Bathing, pedalo, snorkelling, scuba diving, scuba diving (Standard diving dress), jet ski, surfing, windsurfing, sailing, kite surfing, canoeing, canyoning, golf, tennis, riding school, coastal/forest paths, hang-gliding, paragliding, boat trips, fishing, deep-sea angling, angling

### Surroundings

- **Locality :**  
Sea/ocean 1km  
Sandy beach 500m  
Creek 1km  
18 hole golf course 1,5km  
River 200m  
Marina 5km



living room



living room



bedroom

## Interior

- **Receive up to :**  
from 1 to 6 person(s) (4 adults, 2 children)
- **Liveable floor area :**  
90m<sup>2</sup>
- **Interior layout :**  
3 Room(s), 2 bedroom(s), 2 bathroom, living room 18m<sup>2</sup>, separate kitchen, dining area, cosy nook, tv room
- **Sleeps - bed(s) :**  
1 double bed(s), 2 single bed(s), 1 folding bed(s) 1 pers, 1 baby cot(s)
- **Guest facilities :**  
Fireplace, T.V., hi-fi system, DVD player, cable/satelite, wifi, wardrobe, cupboard, hair dryer, electric heating, Skylights, Curtains, Double glazed
- **Appliances :**  
Crockery/cutlery, kitchen utensils, electric coffee maker, electric kettle, toaster, juicer, meat grill, electric cooker, mini-oven, extractor hood, refridgerator, freezer, washing machine, vacuum cleaner, iron, ironing board

## Exterior

- **Ground surface :**  
150m<sup>2</sup>
- **Outside accommodation :**  
Terrace 25m<sup>2</sup>, roof terrace 28m<sup>2</sup>
- **Outside setting :**  
Garden 55m<sup>2</sup>
- **Outside amenities :**  
BBQ, garden table(s), 6 garden seat(s), parasol, 2 sun recliner(s)



kitchen

## Services

- **Washing :**  
Sheets, Towels, Linen, Blanket(s), Quilt(s), Pillows
- **House :**  
Cleaning on departure supplement (+ \$A79\*), Parking

## For your guidance

- **For your guidance**  
Children welcome  
Pets accepted  
Mobile telephone network coverage  
Water : hot/cold  
Local voltage supply : 110-120V / 60Hz  
Electricity supply : mains
- **Handicapped people welcome**  
Fitted out for the disabled : mobility, visually impaired, hard of hearing, mentally



kitchen

Floor plan

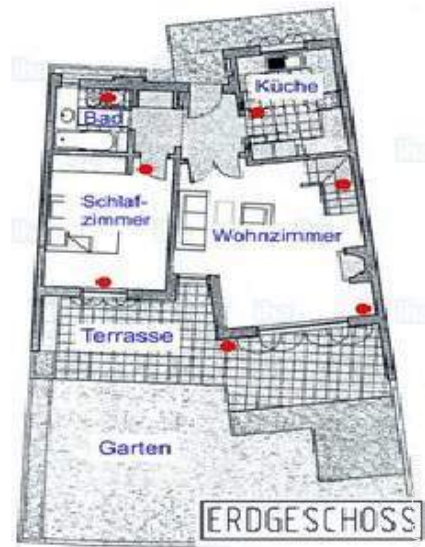
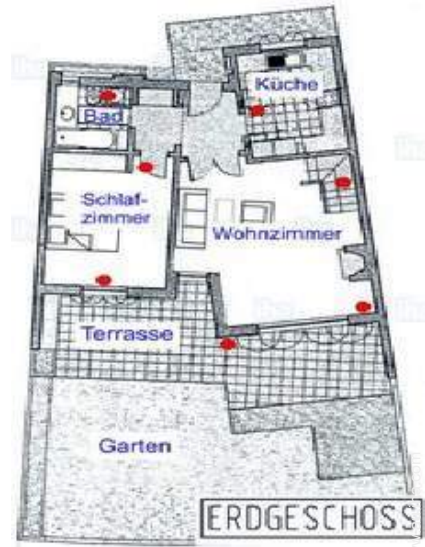


Photo album - 1



tv room



living room



living room



bedroom



kitchen

Photo album - 2



kitchen



bedroom



bathroom



bathroom



roof terrace



roof terrace



View from the property

Theme breaks

Family Holidays

Holidays with Dog

Included in the price of the accommodation

## Location



## Location & Access

" 60 km from Faro airport, next larger place: Portimão: 3 km. Sierra de Monchique: 15 km. "



GPS coordinates in degrees, minutes, seconds: Latitude 37°7'27"N - Longitude 8°31'10"W (Dwelling)

### Address

→ Rua 1º de Maio  
8400 Ferragudo

#### • Airport Faro

→ Faro, Algarve, Portugal  
→ Distance : 60km  
→ Time : 45'

#### • Train station Ferragudo

→ Ferragudo, Algarve, Portugal  
→ Distance : 1,5km  
→ Time : 5'

#### • Motorway (junction) Lagoa

→ Lagoa (Faro), Algarve, Portugal  
→ Distance : 3km

• Lagoa (Faro) : (7,5km)

## Contact

Spoken languages





Gîte - Self Catering  
 Ferragudo - Portugal  
 "Casa Moinho"

Availability calendar - from : november 2020

Nov	Su	M	Tu	W	Th	F	Sa	Su	M	Tu	W	Th	F	Sa	Su	M	Tu	W	Th	F	Sa	Su	M							
2020	1	2	3	4	5	6	7	8	9	10	11	12	13	14	15	16	17	18	19	20	21	22	23	24	25	26	27	28	29	30
																													-	-

Dec	Tu	W	Th	F	Sa	Su	M	Tu	W	Th	F	Sa	Su	M	Tu	W	Th	F	Sa	Su	M	Tu	W	Th							
2020	1	2	3	4	5	6	7	8	9	10	11	12	13	14	15	16	17	18	19	20	21	22	23	24	25	26	27	28	29	30	31
	-	-	-	-	-	-	-	-	-	-	-	-	-	-	-	-	-	-	-	-	-	-	-	-	-	-	-	-	-	-	

Jan	F	Sa	Su	M	Tu	W	Th	F	Sa	Su	M	Tu	W	Th	F	Sa	Su	M	Tu	W	Th	F	Sa	Su							
2021	1	2	3	4	5	6	7	8	9	10	11	12	13	14	15	16	17	18	19	20	21	22	23	24	25	26	27	28	29	30	31
	-	-	-	-	-	-	-	-	-	-	-	-	-	-	-	-	-	-	-	-	-	-	-	-	-	-	-	-	-	-	

Feb	M	Tu	W	Th	F	Sa	Su	M	Tu	W	Th	F	Sa	Su	M	Tu	W	Th	F	Sa	Su								
2021	1	2	3	4	5	6	7	8	9	10	11	12	13	14	15	16	17	18	19	20	21	22	23	24	25	26	27	28	
	-	-	-	-	-	-	-	-	-	-	-	-	-	-	-	-	-	-	-	-	-	-	-	-	-	-	-	-	-

Mar	M	Tu	W	Th	F	Sa	Su	M	Tu	W	Th	F	Sa	Su	M	Tu	W	Th	F	Sa	Su	M	Tu	W							
2021	1	2	3	4	5	6	7	8	9	10	11	12	13	14	15	16	17	18	19	20	21	22	23	24	25	26	27	28	29	30	31
	-	-	-	-	-	-	-	-	-	-	-	-	-	-	-	-	-	-	-	-	-	-	-	-	-	-	-	-	-	-	

Apr	Th	F	Sa	Su	M	Tu	W	Th	F	Sa	Su	M	Tu	W	Th	F	Sa	Su	M	Tu	W	Th	F							
2021	1	2	3	4	5	6	7	8	9	10	11	12	13	14	15	16	17	18	19	20	21	22	23	24	25	26	27	28	29	30
	-	-	-	-	-	-	-	-	-	-	-	-	-	-	-	-	-	-	-	-	-	-	-	-	-	-	-	-	-	-

May	Sa	Su	M	Tu	W	Th	F	Sa	Su	M	Tu	W	Th	F	Sa	Su	M	Tu	W	Th	F	Sa	Su	M							
2021	1	2	3	4	5	6	7	8	9	10	11	12	13	14	15	16	17	18	19	20	21	22	23	24	25	26	27	28	29	30	31
	-	-	-	-	-	-	-	-	-	-	-	-	-	-	-	-	-	-	-	-	-	-	-	-	-	-	-	-	-	-	

June	Tu	W	Th	F	Sa	Su	M	Tu	W	Th	F	Sa	Su	M	Tu	W	Th	F	Sa	Su	M	Tu	W							
2021	1	2	3	4	5	6	7	8	9	10	11	12	13	14	15	16	17	18	19	20	21	22	23	24	25	26	27	28	29	30
	-	-	-	-	-	-	-	-	-	-	-	-	-	-	-	-	-	-	-	-	-	-	-	-	-	-	-	-	-	-

Jul	Th	F	Sa	Su	M	Tu	W	Th	F	Sa	Su	M	Tu	W	Th	F	Sa	Su	M	Tu	W	Th	F	Sa							
2021	1	2	3	4	5	6	7	8	9	10	11	12	13	14	15	16	17	18	19	20	21	22	23	24	25	26	27	28	29	30	31
	-	-	-	-	-	-	-	-	-	-	-	-	-	-	-	-	-	-	-	-	-	-	-	-	-	-	-	-	-	-	

Aug	Su	M	Tu	W	Th	F	Sa	Su	M	Tu	W	Th	F	Sa	Su	M	Tu	W	Th	F	Sa	Su	M	Tu							
2021	1	2	3	4	5	6	7	8	9	10	11	12	13	14	15	16	17	18	19	20	21	22	23	24	25	26	27	28	29	30	31
	-	-	-	-	-	-	-	-	-	-	-	-	-	-	-	-	-	-	-	-	-	-	-	-	-	-	-	-	-	-	



Availability calendar - from : august 2021

Sep	W	Th	F	Sa	Su	M	Tu	W	Th	F	Sa	Su	M	Tu	W	Th	F	Sa	Su	M	Tu	W	Th							
2021	1	2	3	4	5	6	7	8	9	10	11	12	13	14	15	16	17	18	19	20	21	22	23	24	25	26	27	28	29	30
	-	-	-	-	-	-	-	-	-	-	-	-	-	-	-	-	-	-	-	-	-	-	-	-	-	-	-	-	-	

Oct	F	Sa	Su	M	Tu	W	Th	F	Sa	Su	M	Tu	W	Th	F	Sa	Su	M	Tu	W	Th	F	Sa	Su							
2021	1	2	3	4	5	6	7	8	9	10	11	12	13	14	15	16	17	18	19	20	21	22	23	24	25	26	27	28	29	30	31
	-	-	-	-	-	-	-	-	-	-	-	-	-	-	-	-	-	-	-	-	-	-	-	-	-	-	-	-	-	-	

[Month : Next >>](#)

Rental rates - Gîte - Self Catering - House - from 1 to 6 Person(s)

Rates	Night	Weekend	week	2 weeks	Month
<span style="color: green;">■</span> Low season	\$A118* > 7	-	-	-	-
<span style="color: blue;">■</span> Mid season	\$A134* > 7	-	-	-	-
<span style="color: orange;">■</span> High season	\$A150* > 7	-	-	-	-

> Minimum Night

[Book now](#)

Booking conditions

• Reservation

→ Payment made upon reservation :  
 40% of rental sum  
 → Payment balance :  
 on handing over the keys

• rentals

→ Service charges included  
 → Day tax included  
 → Cleaning charge levy on departure :  
 \$A94\*  
 → Anticipated supplement for :  
 - animals  
 - supplementary bed(s)

Accepted methods of payment

• Bank transfer (wire) • Cash

[▶ Book now](#)

[▶ Contact the owner](#)

Contact directly the property owners

[www.au.ih.com](http://www.au.ih.com)

Advert No.

52717

[>> Book now <<](#)

Contact

Spoken languages



\* Converted at the rate indicated : €100 = \$110 = £91 = \$A157.48

Advert No. 52717

[www.au.ih.com](http://www.au.ih.com)

