

# Gîte - Self Catering Nanteuil "Gite La Biraudrie"

Fully restored stone house located on the hillside. Courtyard closed to the east and large terrace of 40m<sup>2</sup> to the west overlooking the garden in partly enclosed espaliers (4700m<sup>2</sup>- natural hedges and walls).



Gîte - Self Catering - Stone-Built House, detached, 1 floor in a(an) Private property

Setting : pleasant, quiet

Capacity : from 2 to 6 person(s)

Bedroom(s) : 2

Room(s) : 5



Gîtes de France (3 ears)

Nanteuil - Deux-Sèvres (79) - Poitou-Charentes

France

Reservation : +33 (0) 9 80 67 28 02 (France)

Advert No. 43280

www.au.ih.com



>> HOLIDAY LETTINGS

BOOK DIRECT WITH THE OWNERS

## Gîte - Self Catering



Gîte - Self Catering - Stone-Built House, detached, 1 floor in a(an) Private property

- Ideal for all age groups, couples with baby
- View : panoramic, unobscured, not overlooked, dominant, country side, river
- Setting : pleasant, quiet

" Fully restored stone house located on the hillside. Courtyard closed to the east and large terrace of 40m2 to the west overlooking the garden in partly enclosed espaliers (4700m2- natural hedges and walls), garden lounge, barbecue. Wide view of the valley of the Sèvre Niortaise and St Maixent the School. DRC: kitchen-stay (23m2), living room (21m2), laundry (22m2), toilet. Floor: room 1 (15m2-1 bed 160, 1 bed 90), room 2 (19m2-2 beds 140), bathroom (7m2), toilet. Central heating fuel, insert. Baby equipment. Shelter planned for 5 people, no excess of capacity allowed (excluding baby). St Maixent L'Ecole 3km (market, train station, all shops, festivals), La Mothe St Héray 10km, Bougon 15km (Tumulus museum, children's entertainment), Niort 26km, Marais Poitevin 35km (hiking tours, boat ride, bike hire), Futuroscope and Poitiers 3/4h, La Rochelle 1h15, Puy1h. Rates for all charges included in Medium and High Seasons. Other periods: water, gas, including electricity, fuel heating in addition to 50E/week (Spring Holidays) to 70E/week and wood heating (insert) charged according to consumption (60E/stere). "

## Assets

- Parking :  
Parking uncovered : 4 off road.
- baby equipment :  
Baby chair, baby bath, baby potty

## Surroundings & location



Countryside



Fishing

" Hikes All accommodations within 5 km of PR, GR. Walking trail 12 km around Nanteuil (map at the tourist office), Chails circuit in Souvigné at 5km, the Hell Well in Exireuil at 3km. Riding Campaign All accommodations that offer horseriding activity and all those within 5 km of an equestrian centre. "

### Leisure

- Leisure activities less than 20 km / 12 miles :

Tennis, hiking, fishing

### Surroundings

- Locality :

Sea/ocean >50km  
Public swimming pool 3km  
Public tennis court 1km  
9 hole golf course 20km  
18 hole golf course 20km  
River 1,5km  
Stretch of water 15km  
Forest 10km



kitchen



kitchen



kitchen

### Interior

- **Receive up to :**  
from 2 to 6 person(s)
- **Liveable floor area :**  
120m<sup>2</sup>
- **Interior layout :**  
5 Room(s), 2 bedroom(s), 1 shower room, 2 WC, living room 22m<sup>2</sup>, sitting room 20m<sup>2</sup>, separate kitchen, tv room, laundry room
- **Sleeps - bed(s) :**  
3 double bed(s), 1 single bed(s), 1 baby cot (s)
- **Guest facilities :**  
Fireplace, T.V., DVD player, board games, t. v points, telephone, internet access, high speed internet access, wifi, cupboard, radio alarmclock, hair dryer, heated towel rail, central heating, Glazed in area, Curtains, Double glazed
- **Appliances :**  
Crockery/cuttlery, kitchen utensils, cafetiere, electric coffee maker, electric espresso coffee maker, electric kettle, toaster, food processor, electric raclette set, fondue set, electric hobs, oven, micro-wave oven, extractor hood, refridgerator, dish washer, washing machine, clothes dryer, vacuum cleaner, iron, ironing board

### Exterior

- **Ground surface :**  
4000m<sup>2</sup>
- **Outside accommodation :**  
Terrace 40m<sup>2</sup>
- **Outside setting :**  
Private courtyard, enclosed grounds 4000m<sup>2</sup>, lawn > 1000m<sup>2</sup>, fountain
- **Outside amenities :**  
6 garden seat(s), parasol, garden seated area, 2 sun recliner(s)



kitchen

### Services

- **Washing :**  
Sheets supplement (+\$A19\*), Towels supplement (+\$A11\*), Linen supplement (+\$A11\*), Blanket(s), Quilt(s), Pillows
- **House :**  
Cleaning on departure supplement (+\$A79\*)

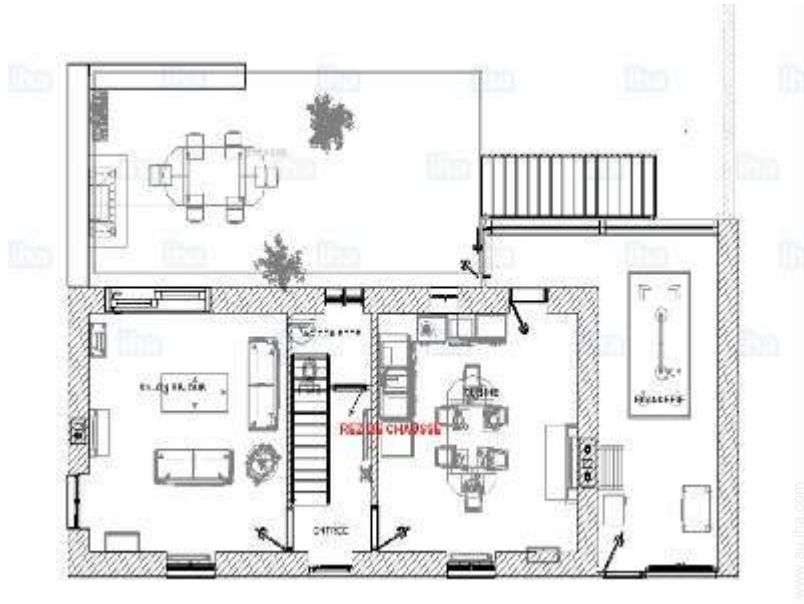
### For your guidance

- **For your guidance**  
Children welcome  
No pet allowed  
Non smoking rental, mobile telephone network coverage  
Water : hot/cold  
Local voltage supply : 220V / 60Hz  
Electricity supply : mains



kitchen

Floor plan



www.au.ihh.com



www.au.ihh.com

Photo album - 1



kitchen



kitchen



kitchen



kitchen



kitchen

Photo album - 2



kitchen



tv room



sitting room



sitting room



sitting room



sitting room



bedroom

Photo album - 3



bedroom

bedroom



bedroom

bedroom



bedroom

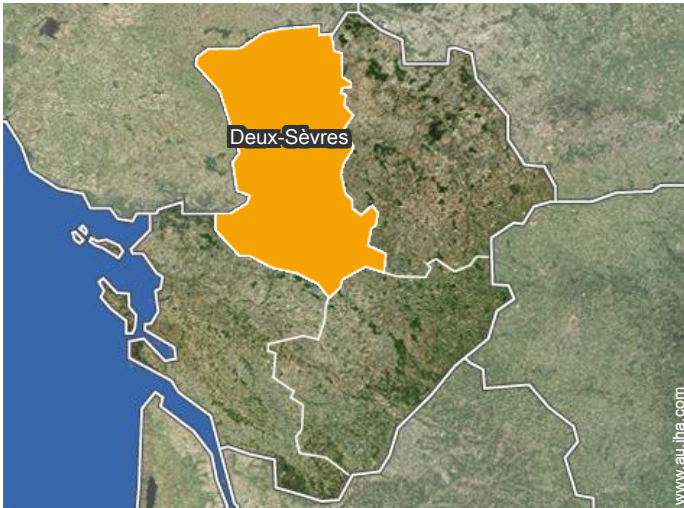
shower room



shower room

shower room

## Location



## Location & Access

" Location City in Nanteuil Department Two-Sèvres Region Poitou-Charentes Nearby Trade 3 km - Riding 5 km - Forest 12 km - Futuroscope 55 km - Station 3 km - Golf 21 km - Poitevin marsh 35 km - Pool 5 km - Water plan 15 km Puy du fou 99 km - Fishing 5 km - Rand on-site - Tennis 1 km "



GPS coordinates in degrees, minutes, seconds: Latitude 46°24'52"N - Longitude 0°10'30"W ([Dwelling](#))

### Address

→ 27, rue de la cerisaie  
79400 Nanteuil

### • Train station Saint Maixent

→ Saint-Maixent-l'École, Deux-Sèvres,  
Poitou-Charentes, France

→ Distance : 2km

→ Time : 5'

### • Motorway (junction) A10

→ Soudan, Deux-Sèvres, Poitou-  
Charentes, France

→ Distance : 5km

→ Time : 10'

- Saint-Maixent-l'École : (3km)
- Niort : (29km)
- La Rochelle : (105km)

## Contact

Spoken languages





Availability calendar - from : october 2020

Oct	Th	F	Sa	Su	M	Tu	W	Th	F	Sa	Su	M	Tu	W	Th	F	Sa	Su	M	Tu	W	Th	F	Sa	Su	M	Tu	W	Th	F	Sa
2020	1	2	3	4	5	6	7	8	9	10	11	12	13	14	15	16	17	18	19	20	21	22	23	24	25	26	27	28	29	30	31

Nov	Su	M	Tu	W	Th	F	Sa	Su	M	Tu	W	Th	F	Sa	Su	M	Tu	W	Th	F	Sa	Su	M							
2020	1	2	3	4	5	6	7	8	9	10	11	12	13	14	15	16	17	18	19	20	21	22	23	24	25	26	27	28	29	30
	-	-	-	-	-	-	-	-	-	-	-	-	-	-	-	-	-	-	-	-	-	-	-	-	-	-	-	-	-	-

Dec	Tu	W	Th	F	Sa	Su	M	Tu	W	Th	F	Sa	Su	M	Tu	W	Th	F	Sa	Su	M	Tu	W	Th	F	Sa	Su	M	Tu	W	Th
2020	1	2	3	4	5	6	7	8	9	10	11	12	13	14	15	16	17	18	19	20	21	22	23	24	25	26	27	28	29	30	31
	-	-	-	-	-	-	-	-	-	-	-	-	-	-	-	-	-	-	-	-	-	-	-	-	-	-	-	-	-	-	-

Jan	F	Sa	Su	M	Tu	W	Th	F	Sa	Su	M	Tu	W	Th	F	Sa	Su	M	Tu	W	Th	F	Sa	Su	M	Tu	W	Th	F	Sa	Su
2021	1	2	3	4	5	6	7	8	9	10	11	12	13	14	15	16	17	18	19	20	21	22	23	24	25	26	27	28	29	30	31
	-	-	-	-	-	-	-	-	-	-	-	-	-	-	-	-	-	-	-	-	-	-	-	-	-	-	-	-	-	-	-

Feb	M	Tu	W	Th	F	Sa	Su	M	Tu	W	Th	F	Sa	Su	M	Tu	W	Th	F	Sa	Su								
2021	1	2	3	4	5	6	7	8	9	10	11	12	13	14	15	16	17	18	19	20	21	22	23	24	25	26	27	28	
	-	-	-	-	-	-	-	-	-	-	-	-	-	-	-	-	-	-	-	-	-	-	-	-	-	-	-	-	-

Mar	M	Tu	W	Th	F	Sa	Su	M	Tu	W	Th	F	Sa	Su	M	Tu	W	Th	F	Sa	Su	M	Tu	W							
2021	1	2	3	4	5	6	7	8	9	10	11	12	13	14	15	16	17	18	19	20	21	22	23	24	25	26	27	28	29	30	31
	-	-	-	-	-	-	-	-	-	-	-	-	-	-	-	-	-	-	-	-	-	-	-	-	-	-	-	-	-	-	

Apr	Th	F	Sa	Su	M	Tu	W	Th	F	Sa	Su	M	Tu	W	Th	F	Sa	Su	M	Tu	W	Th	F	Sa	Su	M	Tu	W	Th	F
2021	1	2	3	4	5	6	7	8	9	10	11	12	13	14	15	16	17	18	19	20	21	22	23	24	25	26	27	28	29	30
	-	-	-	-	-	-	-	-	-	-	-	-	-	-	-	-	-	-	-	-	-	-	-	-	-	-	-	-	-	-

May	Sa	Su	M	Tu	W	Th	F	Sa	Su	M	Tu	W	Th	F	Sa	Su	M	Tu	W	Th	F	Sa	Su	M	Tu	W	Th	F	Sa	Su	M
2021	1	2	3	4	5	6	7	8	9	10	11	12	13	14	15	16	17	18	19	20	21	22	23	24	25	26	27	28	29	30	31
	-	-	-	-	-	-	-	-	-	-	-	-	-	-	-	-	-	-	-	-	-	-	-	-	-	-	-	-	-	-	-

June	Tu	W	Th	F	Sa	Su	M	Tu	W	Th	F	Sa	Su	M	Tu	W	Th	F	Sa	Su	M	Tu	W							
2021	1	2	3	4	5	6	7	8	9	10	11	12	13	14	15	16	17	18	19	20	21	22	23	24	25	26	27	28	29	30
	-	-	-	-	-	-	-	-	-	-	-	-	-	-	-	-	-	-	-	-	-	-	-	-	-	-	-	-	-	-

Jul	Th	F	Sa	Su	M	Tu	W	Th	F	Sa	Su	M	Tu	W	Th	F	Sa	Su	M	Tu	W	Th	F	Sa	Su	M	Tu	W	Th	F	Sa
2021	1	2	3	4	5	6	7	8	9	10	11	12	13	14	15	16	17	18	19	20	21	22	23	24	25	26	27	28	29	30	31
	-	-	-	-	-	-	-	-	-	-	-	-	-	-	-	-	-	-	-	-	-	-	-	-	-	-	-	-	-	-	-

Reserved
  Mid season
  Low season



Gîte - Self Catering  
Poitou-Charentes - Nanteuil  
"Gite La Biraudrie"

10  
[Book now](#)

Availability calendar - from : july 2021

Aug	Su	M	Tu	W	Th	F	Sa	Su	M	Tu	W	Th	F	Sa	Su	M	Tu	W	Th	F	Sa	Su	M	Tu							
2021	1	2	3	4	5	6	7	8	9	10	11	12	13	14	15	16	17	18	19	20	21	22	23	24	25	26	27	28	29	30	31
-	-	-	-	-	-	-	-	-	-	-	-	-	-	-	-	-	-	-	-	-	-	-	-	-	-	-	-	-	-	-	

Sep	W	Th	F	Sa	Su	M	Tu	W	Th	F	Sa	Su	M	Tu	W	Th	F	Sa	Su	M	Tu	W	Th							
2021	1	2	3	4	5	6	7	8	9	10	11	12	13	14	15	16	17	18	19	20	21	22	23	24	25	26	27	28	29	30
-	-	-	-	-	-	-	-	-	-	-	-	-	-	-	-	-	-	-	-	-	-	-	-	-	-	-	-	-	-	



Reserved



Mid season



Low season

[Month : Next >>](#)

Rental rates - Gîte - Self Catering - Stone-Built House - from 2 to 6 Person(s)

Rates	Night	Weekend	week	2 weeks	Month
Low season	\$A134* > 2	\$A299* (Friday)	\$A598* (Saturday)	-	-
Mid season	-	-	\$A709* (Saturday)	-	-
High season	-	-	\$A1008* (Saturday)	-	-

(Check-in day) > Minimum Night

[Book now](#)

Booking conditions

• Reservation

- Payment made upon reservation : 25% of rental sum
- Payment balance : 1 month before the stay
- Deposit required : \$A787\*

• rentals

- Service charges to be added
- Day tax in addition
- Cleaning charge levy on departure : \$A79\*
- Anticipated supplement for : - firewood

Accepted methods of payment

- Bank transfer (wire)
- MasterCard/ EuroCard
- Cheque
- Holiday voucher

[▶ Book now](#)

[▶ Contact the owner](#)

Contact directly the property owners

[www.au.ih.com](http://www.au.ih.com)

Advert No.

43280

[>> Book now <<](#)

Contact

Spoken languages



\* Converted at the rate indicated : €100 = \$110 = £91 = \$A157.48

Advert No. 43280

[www.au.ih.com](http://www.au.ih.com)

