

Gîte - Self Catering São João de Tarouca "Casa da Portaria"

The House is the ideal place for your vacation, with family or with friends. It has 6 double rooms, swimming pool, barbecue, parking, a lounge with 100 m2 and 2000 m2 of land.



Gîte - Self Catering - Country House, detached, 2 floors, separate entrance, in a(an) Property

Setting : country setting, peaceful

Capacity : from 10 to 14 person(s)

Bedroom(s) : 6

São João de Tarouca - District of Viseu - Centro Region (Portugal)
Portugal

Advert No. 16367

www.au.ihaholidayads.com



>> HOLIDAY LETTINGS

BOOK DIRECT WITH THE OWNERS

Gîte - Self Catering



Gîte - Self Catering - Country House, detached, 2 floors, separate entrance, in a (an) Property

- **Ideal for family groups, large families**
- **View :** panoramic, mountain, swimming pool, farmland, river, monument
- **Setting :** country setting, peaceful
- **Exposure :** North-west

" The House has 6 double rooms, of which 3 are suites. We rent the whole house or just a part, contact us for prices and conditions. In addition to the 6 bedrooms, the house has a large hall with 100 m2, two full kitchens, 5 WC, parking, barbecue, swimming pool and 2000 m2 of land. Options. We can rent the house in its entirety, with capacity for 12 people, or just a part, having an independent kitchen area and the number of rooms you need. "

Assets

- **Swimming pool :**
Private swimming-pool, rectangular (length 10m, width 5m), steps in, step ladder, outside shower (open from '01 april' till '15 september')
- **Parking :**
Parking uncovered : 2 internal.
- **Advantages :**
Darts, 3 bike(s)

Surroundings & location



Countryside



Culture

" Located in the Douro region, famous for its wine and landscapes, is located in an historic village, with a magnificent Monastery, Church, bridges. The river Varosa passes by with waterfalls, windmills and places to swim. "

Leisure

- **Leisure activities less than 20 km / 12 miles :**

Banana boat, water skiing, jet ski, canoeing, canyoning, rafting, tennis, squash, riding school, climbing, hang-gliding, paragliding, boat trips, mini-golf, ATV/Quad Bike, RC modelling track, basketball, volleyball, paintball, hunting, fishing

- **Attractions and relaxation :**

Historical site, museum, cellar and wine tasting

Surroundings

- **Locality :**

Heated swimming pool 20km
Sea/ocean >50km
Creek 25km
Public swimming pool 10km
Public tennis court 15km
9 hole golf course >50km
Waterfall 500m
River 200m
Stretch of water 25km
Mountain range 1km
Slipway 20km
Jetski slipway 20km

- **Amenities :**

Village centre <50m
Town centre 15km
Bus stop / bus station 15km
Car rental 15km
Breadshop 7,5km
Caterer 7,5km
Local shops 100m
Supermarket 15km
High class retailers 40km
Hairdressing salon 500m
Internet cafe 15km
Post office 7,5km
Bank 7,5km
Cash point 7,5km
Chemist 7,5km
Doctor 7,5km
Hospital 15km
Dispensing clinic 7,5km





view from the garden/park

Interior

- **Receive up to :**
from 10 to 14 person(s) (12 adults, 2 children)
- **Interior layout :**
6 bedroom(s), 5 bathroom, living room 25m², sitting room 90m², separate kitchen, dining area, cosy nook, games room, reception hall
- **Sleeps - bed(s) :**
4 double bed(s), 1 king-size bed(s), 2 sofa bed(s) 1 pers
- **Guest facilities :**
Fireplace, T.V., home cinema, hi-fi system, videoplayer, DVD player, board games, book collection, film collection, t.v points, telephone, cable/satelite, wifi, wardrobe, central heating, Curtains, Blinds, Double glazed
- **Appliances :**
Crockery/cuttlery, kitchen utensils, cafetiere, electric espresso coffee maker, toaster, juicer, meat grill, gas cooker, oven, mini-oven, micro-wave oven, extractor hood, refridgerator, freezer, dish washer, washing machine, vacuum cleaner, iron, ironing board

Exterior

- **Ground surface :**
2000m²
- **Outside accommodation :**
Terrace 70m², sundeck 180m², gazebo, traditional tent
- **Outside setting :**
Private courtyard 70m², enclosed grounds 2000m², olive grove
- **Outside amenities :**
BBQ, garden table(s), 8 garden seat(s), arbour, parasol, 3 chaise(s) longue(s), 1 hammock(s), 1 rocking chair(s), outside shower facilities



kitchen

Services

- **Washing :**
Sheets (1 X / per week), Towels (1 X / per week), Linen (1 X / per week), Blanket(s) (1 X / per week), Quilt(s) (1 X / per week), Pillows (1 X / per week)
- **House :**
Cleaning (1 X / per week), Garden/swimming pool maintenance (1 X / per week)
- **Restauration :**
Breakfast supplement (+\$A16*)

For your guidance

- **For your guidance**
Children welcome
Water : hot/cold
Local voltage supply : 220-240V / 50Hz



master bedroom

Photo album - 1



view from the garden/park



master bedroom



kitchen

Photo album - 2



bedroom



bedroom



living room



bathroom



kitchen



bedroom



bedroom



sitting room

Photo album - 3



sitting room



reception hall



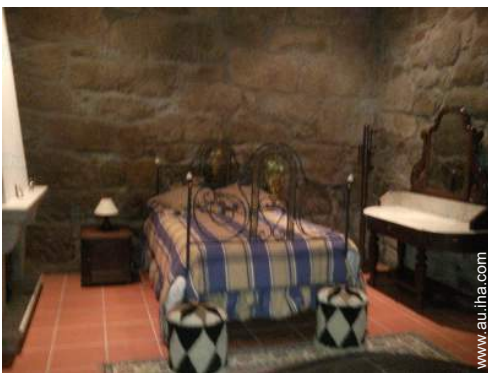
bathroom



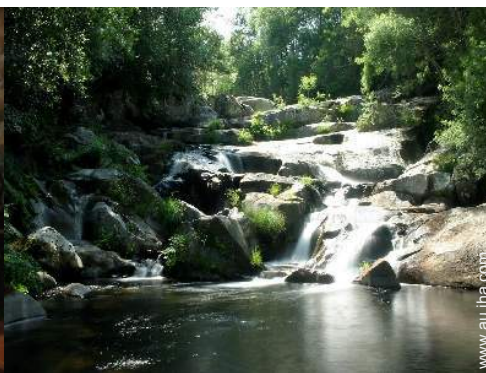
historical site



historical site



bedroom

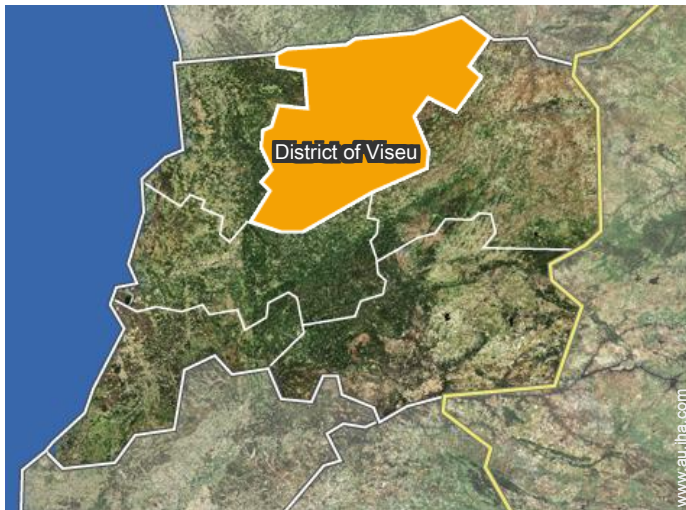


waterfall



private courtyard

Location



Location & Access

" In the Centre of São João de Tarouca, in front of the Church. "



GPS coordinates in degrees, minutes, seconds: Latitude 40°59'40"N - Longitude 7°44'54"W (Dwelling)

Address

→ Casa da Portaria
3610 082 São João de Tarouca

- Lamego : (15km)
- Peso da Régua : (23km)
- Vila Real : (45km)

Contact

Spoken languages



Gîte - Self Catering
 District of Viseu - Centro Region (Portugal)
"Casa da Portaria"

Availability calendar - from : june 2019

June	Sa	Su	M	Tu	W	Th	F	Sa	Su	M	Tu	W	Th	F	Sa	Su	M	Tu	W	Th	F	Sa	Su	M	Tu	W	Th	F	Sa	Su
2019	1	2	3	4	5	6	7	8	9	10	11	12	13	14	15	16	17	18	19	20	21	22	23	24	25	26	27	28	29	30

Jul	M	Tu	W	Th	F	Sa	Su	M	Tu	W	Th	F	Sa	Su	M	Tu	W	Th	F	Sa	Su	M	Tu	W	Th	F	Sa	Su	M	Tu	W
2019	1	2	3	4	5	6	7	8	9	10	11	12	13	14	15	16	17	18	19	20	21	22	23	24	25	26	27	28	29	30	31
	-	-	-	-	-	-	-	-	-	-	-	-	-	-	-	-	-	-	-	-	-	-	-	-	-	-	-	-	-	-	-

Aug	Th	F	Sa	Su	M	Tu	W	Th	F	Sa	Su	M	Tu	W	Th	F	Sa	Su	M	Tu	W	Th	F	Sa	Su	M	Tu	W	Th	F	Sa
2019	1	2	3	4	5	6	7	8	9	10	11	12	13	14	15	16	17	18	19	20	21	22	23	24	25	26	27	28	29	30	31
	-	-	-	-	-	-	-	-	-	-	-	-	-	-	-	-	-	-	-	-	-	-	-	-	-	-	-	-	-	-	-

Sep	Su	M	Tu	W	Th	F	Sa	Su	M	Tu	W	Th	F	Sa	Su	M	Tu	W	Th	F	Sa	Su	M	Tu	W	Th	F	Sa	Su	M
2019	1	2	3	4	5	6	7	8	9	10	11	12	13	14	15	16	17	18	19	20	21	22	23	24	25	26	27	28	29	30
	-	-	-	-	-	-	-	-	-	-	-	-	-	-	-	-	-	-	-	-	-	-	-	-	-	-	-	-	-	-

Oct	Tu	W	Th	F	Sa	Su	M	Tu	W	Th	F	Sa	Su	M	Tu	W	Th	F	Sa	Su	M	Tu	W	Th	F	Sa	Su	M	Tu	W	Th
2019	1	2	3	4	5	6	7	8	9	10	11	12	13	14	15	16	17	18	19	20	21	22	23	24	25	26	27	28	29	30	31
	-	-	-	-	-	-	-	-	-	-	-	-	-	-	-	-	-	-	-	-	-	-	-	-	-	-	-	-	-	-	-

Nov	F	Sa	Su	M	Tu	W	Th	F	Sa	Su	M	Tu	W	Th	F	Sa	Su	M	Tu	W	Th	F	Sa	Su	M	Tu	W	Th	F	Sa
2019	1	2	3	4	5	6	7	8	9	10	11	12	13	14	15	16	17	18	19	20	21	22	23	24	25	26	27	28	29	30
	-	-	-	-	-	-	-	-	-	-	-	-	-	-	-	-	-	-	-	-	-	-	-	-	-	-	-	-	-	-

Dec	Su	M	Tu	W	Th	F	Sa	Su	M	Tu	W	Th	F	Sa	Su	M	Tu	W	Th	F	Sa	Su	M	Tu	W	Th	F	Sa	Su	M	Tu
2019	1	2	3	4	5	6	7	8	9	10	11	12	13	14	15	16	17	18	19	20	21	22	23	24	25	26	27	28	29	30	31
	-	-	-	-	-	-	-	-	-	-	-	-	-	-	-	-	-	-	-	-	-	-	-	-	-	-	-	-	-	-	-

Jan	W	Th	F	Sa	Su	M	Tu	W	Th	F	Sa	Su	M	Tu	W	Th	F	Sa	Su	M	Tu	W	Th	F	Sa	Su	M	Tu	W	Th	F
2020	1	2	3	4	5	6	7	8	9	10	11	12	13	14	15	16	17	18	19	20	21	22	23	24	25	26	27	28	29	30	31
	-	-	-	-	-	-	-	-	-	-	-	-	-	-	-	-	-	-	-	-	-	-	-	-	-	-	-	-	-	-	-

Feb	Sa	Su	M	Tu	W	Th	F	Sa	Su	M	Tu	W	Th	F	Sa	Su	M	Tu	W	Th	F	Sa	Su	M	Tu	W	Th	F	Sa
2020	1	2	3	4	5	6	7	8	9	10	11	12	13	14	15	16	17	18	19	20	21	22	23	24	25	26	27	28	29
	-	-	-	-	-	-	-	-	-	-	-	-	-	-	-	-	-	-	-	-	-	-	-	-	-	-	-	-	-

Mar	Su	M	Tu	W	Th	F	Sa	Su	M	Tu	W	Th	F	Sa	Su	M	Tu	W	Th	F	Sa	Su	M	Tu	W	Th	F	Sa	Su	M	Tu
2020	1	2	3	4	5	6	7	8	9	10	11	12	13	14	15	16	17	18	19	20	21	22	23	24	25	26	27	28	29	30	31
	-	-	-	-	-	-	-	-	-	-	-	-	-	-	-	-	-	-	-	-	-	-	-	-	-	-	-	-	-	-	-

■ High season
 ■ Festive specials
 ■ Mid season



Availability calendar - from : march 2020

Apr	W	Th	F	Sa	Su	M	Tu	W	Th	F	Sa	Su	M	Tu	W	Th	F	Sa	Su	M	Tu	W	Th	F	Sa	Su	M	Tu	W	Th
2020	1	2	3	4	5	6	7	8	9	10	11	12	13	14	15	16	17	18	19	20	21	22	23	24	25	26	27	28	29	30
	-	-	-	-	-	-	-	-	-	-	-	-	-	-	-	-	-	-	-	-	-	-	-	-	-	-	-	-	-	

May	F	Sa	Su	M	Tu	W	Th	F	Sa	Su	M	Tu	W	Th	F	Sa	Su	M	Tu	W	Th	F	Sa	Su							
2020	1	2	3	4	5	6	7	8	9	10	11	12	13	14	15	16	17	18	19	20	21	22	23	24	25	26	27	28	29	30	31
	-	-	-	-	-	-	-	-	-	-	-	-	-	-	-	-	-	-	-	-	-	-	-	-	-	-	-	-	-		



High season



Festive specials



Mid season

[Month : Next >>](#)

Rental rates - Gîte - Self Catering - Country House - from 10 to 14 Person(s)

Rates	Night	Weekend	week	2 weeks	Month
Low season	\$A315* <small>> 2</small> ↓	\$A787*	\$A1417*	-	-
Mid season	-	-	\$A1890* (Saturday)	-	-
High season	-	-	\$A3779* (Saturday)	-	-
Festive specials	-	-	\$A4567* (Saturday) > 7	-	-

↓ Reducing rates (Check-in day) > Minimum Night

[Book now](#)

Booking conditions

• Reservation

→ Payment made upon reservation :
 25% of rental sum
 → Payment balance :
 on handing over the keys

Contact

Spoken languages



Accepted methods of payment

• Bank transfer (wire) • PayPal • Cash

[▶ Book now](#)

[▶ Contact the owner](#)

Contact directly the property owners

www.au.ihaholidayads.com

Advert No.

16367

[>> Book now <<](#)

* Converted at the rate indicated : €100 = \$116.85 = £89 = \$A157.48

Advert No. 16367

www.au.ihaholidayads.com

