

Holiday lettings Ashdod Flat-Apartments



Flat-Apartments 1st floor, shared entrance, in a(an) Private estate 10 floors

Setting : waterfront

Capacity : from 1 to 6 person(s)

Bedroom(s) : 3

Room(s) : 4

Ashdod

Israel

Advert No. 13379

Reservation : +33 (0) 1 42 27 95 87 (France)

www.au.iha.com



>> HOLIDAY LETTINGS

BOOK DIRECT WITH THE OWNERS

Holiday lettings



Flat-Apartments 1st floor, shared entrance, in a(an) Private estate 10 floors

- **Ideal for all age groups**
- **View** : unobscured, not overlooked, garden/park
- **Setting** : waterfront

Surroundings & location



Seaside

Leisure

- **Leisure activities less than 20 km / 12 miles :**

Bathing

- **Attractions and relaxation :**

Restaurant, park and garden

Surroundings

- **Locality :**

Sea/ocean 300m
Sandy beach 300m
Marina 5km

- **Amenities :**

Town centre
Bus stop / bus station
Supermarket
Hairdressing salon
Hospital 30km



block of flats



block of flats



block of flats

Advert No. 13379

www.au.iha.com





block of flats

Exterior

- Outside setting :
Garden



block of flats

Interior

- Receive up to :
from 1 to 6 person(s) (6 adults)
- Liveable floor area :
100m²
- Interior layout :
4 Room(s), 3 bedroom(s), 1 bathroom, 2 WC,
living room 30m², american style kitchen,
dining room, tv room, loggia
- Sleeps - bed(s) :
1 double bed(s), 4 single bed(s)
- Guest facilities :
Lift, T.V., cable/satelite, wardrobe, Hanging
wardrobe, radio alarmclock, hair dryer, fully
air conditioned, central heating, Glazed in
area, Curtains, Double glazed, electric
shutters, entry phone system, digipad entry
system
- Appliances :
Crockery/cuttlery, kitchen utensils, cafetiere,
electric kettle, toaster, gas cooker, oven,
refridgerator, freezer, washing machine,
iron, ironing board

Services

- Washing :
Sheets, Towels, Linen, Beach towels,
Blanket(s), Quilt(s), Pillows
- House :
Cleaning on departure

For your guidance

- For your guidance
Mobile telephone network coverage
Water : hot/cold
Local voltage supply : 220-240V / 50Hz



block of flats

Photo album - 1



block of flats



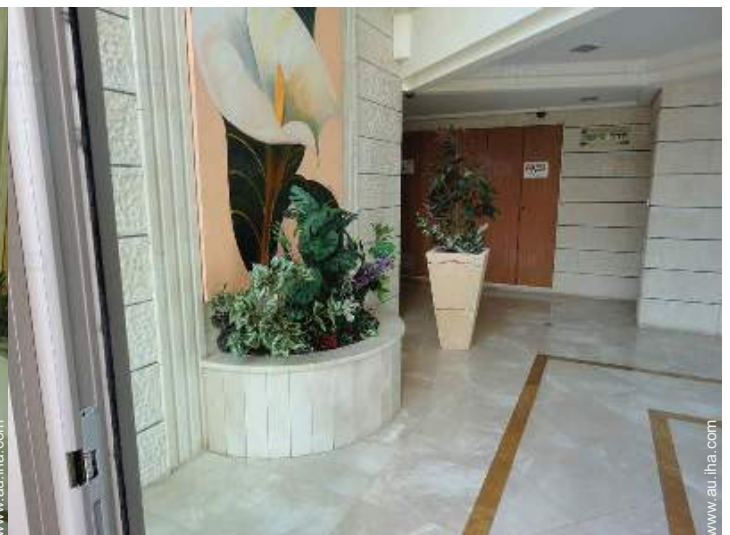
block of flats



block of flats



block of flats



block of flats

Photo album - 2



block of flats

Surroundings



tv room

dining room



american style kitchen

loggia



garden/park view

Photo album - 3

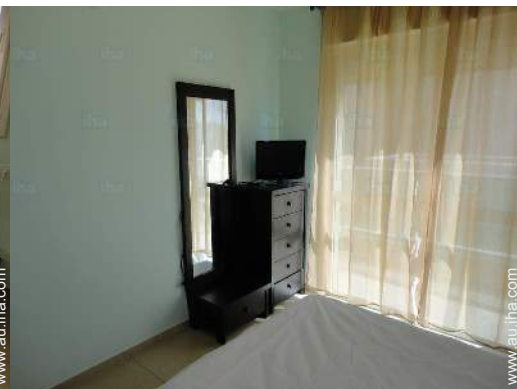


bathroom

bathroom



master bedroom



master bedroom



master bedroom

WC



unobscured view



block of flats

Location



Location & Access



GPS coordinates in degrees, minutes, seconds: Latitude 31° 46'14"N - Longitude 34°37'25"E (Dwelling)

Address

→ 2 rue Bareket

● **Airport Ben Gurion**

→ Tel Aviv, Israel

→ Time : 30'

● **Motorway (junction) Ashdod sud**

→ Ashdod, Israel

→ Time : 15'

● Tel Aviv : (40km)

● Ashkelon : (30km)

● Lod : (40km)

Contact

Spoken languages



Holiday lettings Ashdod - Israel Flat-Apartments

[Book now](#)

Availability calendar - from : june 2019

June	Sa	Su	M	Tu	W	Th	F	Sa	Su	M	Tu	W	Th	F	Sa	Su	M	Tu	W	Th	F	Sa	Su	M	Tu	W	Th	F	Sa	Su	
2019	1	2	3	4	5	6	7	8	9	10	11	12	13	14	15	16	17	18	19	20	21	22	23	24	25	26	27	28	29	30	

Jul	M	Tu	W	Th	F	Sa	Su	M	Tu	W	Th	F	Sa	Su	M	Tu	W	Th	F	Sa	Su	M	Tu	W	Th	F	Sa	Su	M	Tu	W
2019	1	2	3	4	5	6	7	8	9	10	11	12	13	14	15	16	17	18	19	20	21	22	23	24	25	26	27	28	29	30	31
	-	-	-	-	-	-	-	-	-	-	-	-	-	-	-	-	-	-	-	-	-	-	-	-	-	-	-	-	-	-	-

Aug	Th	F	Sa	Su	M	Tu	W	Th	F	Sa	Su	M	Tu	W	Th	F	Sa	Su	M	Tu	W	Th	F	Sa	Su	M	Tu	W	Th	F	Sa
2019	1	2	3	4	5	6	7	8	9	10	11	12	13	14	15	16	17	18	19	20	21	22	23	24	25	26	27	28	29	30	31
	-	-	-	-	-	-	-	-	-	-	-	-	-	-	-	-	-	-	-	-	-	-	-	-	-	-	-	-	-	-	-

Sep	Su	M	Tu	W	Th	F	Sa	Su	M	Tu	W	Th	F	Sa	Su	M	Tu	W	Th	F	Sa	Su	M	Tu	W	Th	F	Sa	Su	M
2019	1	2	3	4	5	6	7	8	9	10	11	12	13	14	15	16	17	18	19	20	21	22	23	24	25	26	27	28	29	30
	-	-	-	-	-	-	-	-	-	-	-	-	-	-	-	-	-	-	-	-	-	-	-	-	-	-	-	-	-	-

Oct	Tu	W	Th	F	Sa	Su	M	Tu	W	Th	F	Sa	Su	M	Tu	W	Th	F	Sa	Su	M	Tu	W	Th	F	Sa	Su	M	Tu	W	Th
2019	1	2	3	4	5	6	7	8	9	10	11	12	13	14	15	16	17	18	19	20	21	22	23	24	25	26	27	28	29	30	31
	-	-	-	-	-	-	-	-	-	-	-	-	-	-	-	-	-	-	-	-	-	-	-	-	-	-	-	-	-	-	-

Nov	F	Sa	Su	M	Tu	W	Th	F	Sa	Su	M	Tu	W	Th	F	Sa	Su	M	Tu	W	Th	F	Sa	Su	M	Tu	W	Th	F	Sa
2019	1	2	3	4	5	6	7	8	9	10	11	12	13	14	15	16	17	18	19	20	21	22	23	24	25	26	27	28	29	30
	-	-	-	-	-	-	-	-	-	-	-	-	-	-	-	-	-	-	-	-	-	-	-	-	-	-	-	-	-	-

Dec	Su	M	Tu	W	Th	F	Sa	Su	M	Tu	W	Th	F	Sa	Su	M	Tu	W	Th	F	Sa	Su	M	Tu	W	Th	F	Sa	Su	M	Tu
2019	1	2	3	4	5	6	7	8	9	10	11	12	13	14	15	16	17	18	19	20	21	22	23	24	25	26	27	28	29	30	31
	-	-	-	-	-	-	-	-	-	-	-	-	-	-	-	-	-	-	-	-	-	-	-	-	-	-	-	-	-	-	-

Jan	W	Th	F	Sa	Su	M	Tu	W	Th	F	Sa	Su	M	Tu	W	Th	F	Sa	Su	M	Tu	W	Th	F	Sa	Su	M	Tu	W	Th	F
2020	1	2	3	4	5	6	7	8	9	10	11	12	13	14	15	16	17	18	19	20	21	22	23	24	25	26	27	28	29	30	31
	-	-	-	-	-	-	-	-	-	-	-	-	-	-	-	-	-	-	-	-	-	-	-	-	-	-	-	-	-	-	-

Feb	Sa	Su	M	Tu	W	Th	F	Sa	Su	M	Tu	W	Th	F	Sa	Su	M	Tu	W	Th	F	Sa	Su	M	Tu	W	Th	F	Sa
2020	1	2	3	4	5	6	7	8	9	10	11	12	13	14	15	16	17	18	19	20	21	22	23	24	25	26	27	28	29
	-	-	-	-	-	-	-	-	-	-	-	-	-	-	-	-	-	-	-	-	-	-	-	-	-	-	-	-	-

Mar	Su	M	Tu	W	Th	F	Sa	Su	M	Tu	W	Th	F	Sa	Su	M	Tu	W	Th	F	Sa	Su	M	Tu	W	Th	F	Sa	Su	M	Tu
2020	1	2	3	4	5	6	7	8	9	10	11	12	13	14	15	16	17	18	19	20	21	22	23	24	25	26	27	28	29	30	31
	-	-	-	-	-	-	-	-	-	-	-	-	-	-	-	-	-	-	-	-	-	-	-	-	-	-	-	-	-	-	-

■ Mid season
 ■ High season
 ■ Low season



Holiday lettings Ashdod - Israel Flat-Apartments

9

[Book now](#)

Availability calendar - from : march 2020

Apr	W	Th	F	Sa	Su	M	Tu	W	Th	F	Sa	Su	M	Tu	W	Th	F	Sa	Su	M	Tu	W	Th							
2020	1	2	3	4	5	6	7	8	9	10	11	12	13	14	15	16	17	18	19	20	21	22	23	24	25	26	27	28	29	30
	-	-	-	-	-	-	-	-	-	-	-	-	-	-	-	-	-	-	-	-	-	-	-	-	-	-	-	-	-	

May	F	Sa	Su	M	Tu	W	Th	F	Sa	Su	M	Tu	W	Th	F	Sa	Su	M	Tu	W	Th	F	Sa	Su							
2020	1	2	3	4	5	6	7	8	9	10	11	12	13	14	15	16	17	18	19	20	21	22	23	24	25	26	27	28	29	30	31
	-	-	-	-	-	-	-	-	-	-	-	-	-	-	-	-	-	-	-	-	-	-	-	-	-	-	-	-	-	-	



Mid season



High season



Low season

[Month : Next >>](#)

Rental rates - Flat-Apartments - from 1 to 6 Person(s)

Rates	Night	Weekend	week	2 weeks	Month
Low season	-	-	\$A787*	\$A1339*	\$A2520*
Mid season	-	-	\$A945*	\$A1654*	\$A2992*
High season	-	-	\$A1339*	\$A2677*	\$A5354*
Promotional period	-	-	\$A630*	\$A1102*	-

[Book now](#)

Booking conditions

• Reservation

- Payment made upon reservation : 30% of rental sum
- Payment balance : 1 month before the stay
- Deposit required : \$A787*

Accepted methods of payment

- International Money Order
- Bank transfer (wire)
- Cheque
- Cash

[▶ Book now](#)

[▶ Contact the owner](#)

Contact directly the property owners

www.au.iha.com

Advert No.

13379

[>> Book now <<](#)

Contact

Spoken languages



* Converted at the rate indicated : €100 = \$116.85 = £89 = \$A157.48

Advert No. 13379

www.au.iha.com



[>> HOLIDAY LETTINGS](#)

[BOOK DIRECT WITH THE OWNERS](#)