

Holiday lettings Bartholomäberg "Ferienwohnung Herold im Ferien- und Erho"

Beautiful apartment in the Montafon!



Flat-Apartments 2nd floor in a(an)
Private estate 3 floors

Setting : sporty, suitable for a relaxing
break

Capacity : from 1 to 6 person(s)

Bedroom(s) : 2

Room(s) : 3

Bartholomäberg - Vorarlberg

Austria

Reservation : +49 (0) 7266 309515 (Germany)

Advert No. 4565

www.au.iha.com



>> HOLIDAY LETTINGS

BOOK DIRECT WITH THE OWNERS

Holiday lettings



Flat-Apartments 2nd floor in a(an) Private estate 3 floors

- **Ideal for family, sporty types**
- **View :** panoramic, mountain, country side, farmland, forest
- **Setting :** sporty, suitable for a relaxing break

"Our apartment is an apartment house, quiet and sunny located on a cul de sac on the edge of the forest. Our three-room apartment of 54 m² is lovingly furnished and can accommodate up to 6 people. It has 2 bedrooms, a bathroom, a fully stocked kitchen unit, a cosy dining area and a living area. The apartment is equipped with Internet connection, satellite TV, stereo and CD player. The kitchen facilities consist of electric stove, refrigerator, dishwasher, microwave oven, coffee machine, etc. In the apartment house, a heated ski storage room and a laundry room with washing machine and dryer is located on the ground floor. The exterior offers freedom of movement enough space and facilities for adults and children or just to relax. We have also made for parking."

Assets

- **Parking :**
Parking uncovered : 1 reserved bay, 5 off road.
- **Advantages :**
Ski locker, ski boot warmer
- **baby equipment :**
Baby chair

Surroundings & location



Mountain



Ski

"The different ski areas offer different stimuli. From young, to old comes everyone from beginner to the sports freak. For example on the GOLM with its wide slopes, where already exciting Ladies World Cup races have been decided. Or on the sun terrace of the Hochjoch with its vast ski area and the 470 m long ski tunnel. Ideal for all claims also the vast area of the Silvretta Nova, is probably one of the most beautiful and best developed ski areas in the Alps. Athletes and nature lovers will appreciate also gargellen, where over 30 ski tours, in part go out cross-border in the neighboring Switzerland. Not to mention the area on the Bielerhöhe, a starting point for Alpine skiing and glacier tours above the tree line. There the altitude cross-country ski runs invite leader, above sea level over the frozen lake of the Silvretta in 2000 m to Nordic skiing. Ski area Kristberg in Silbertal with an 11 km-long panoramic track is as popular as ski area families grabs in Tschagguns."

Leisure

- **Leisure activities less than 20 km / 12 miles :**

Alpine skiing, cross-country skiing, off-piste skiing, ski-trekking, Télémart skiing, snowboarding, luge (run), ice-skating, bathing, golf, pathway, hiking, climbing, rock climbing, mountain bike (path), hang-gliding, paragliding

- **Supervised :**

Ski school, child's ski area

- **Attractions and relaxation :**

Restaurant, cinema, historical site, local craftshop

Surroundings

- **Locality :**

Ski slopes 1km
Ski lifts 1km
Ice skating rink 10km
Heated swimming pool 10km
Public swimming pool 10km
9 hole golf course 10km
Forest 500m
Mountain range 800m

- **Amenities :**

Village centre 800m
Town centre 10km
Ski bus pick up point 50m
Bike/mountain bike hire 800m
Ski hire shop 800m
Breadshop 800m
Local shops 800m
Supermarket 800m
Bank 800m

Cash point 800m
Chemist 10km
Hospital 10km



living room



the house



living room



living room

Interior

- **Receive up to :**
from 1 to 6 person(s) (4 adults, 2 children)
- **Liveable floor area :**
55m²
- **Interior layout :**
3 Room(s), 2 bedroom(s), 1 bathroom, 1 WC, living room 22m², separate kitchen, dining area
- **Sleeps - bed(s) :**
2 double bed(s), 1 divan 1 pers, 1 baby cot(s)
- **Guest facilities :**
Lift, T.V., hi-fi system, internet access, wifi, wardrobe, cupboard, Hanging wardrobe, hair dryer, central heating, Curtains, entry phone system, fire alarm
- **Appliances :**
Crockery/cuttlery, kitchen utensils, electric coffee maker, electric kettle, toaster, electric cooker, electric hobs, oven, micro-wave oven, extractor hood, refridgerator, freezer, dish washer, washing machine, clothes dryer, vacuum cleaner

Services

- **Washing :**
Sheets, Towels, Blanket(s), Pillows
- **House :**
Cleaning on departure supplement (+\$A110*), Snow clearance, Caretaker/concierge, Parking

For your guidance

- **For your guidance**
Children welcome
Non smoking rental, mobile telephone network coverage, personal transport advisable
Water : hot/cold
Local voltage supply : 220-240V / 50Hz
Electricity supply : mains

Floor plan



www.au.ihh.com

Photo album - 1



the house



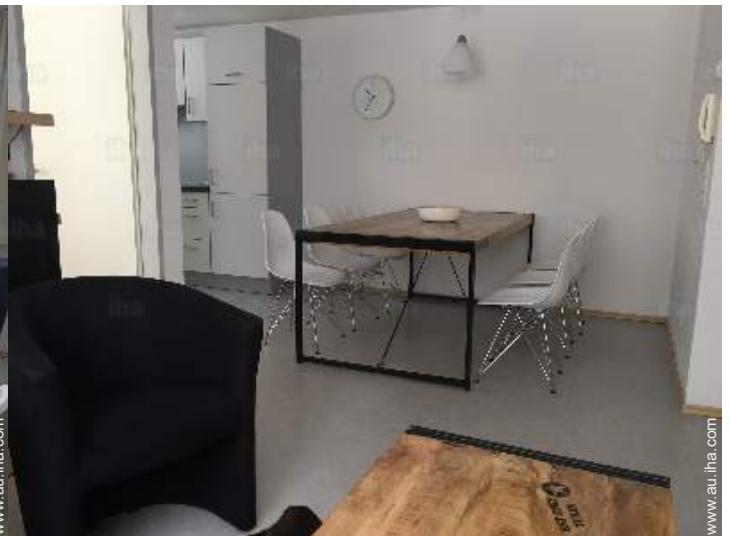
living room



living room



living room



dining area

Photo album - 2



kitchen



bedroom



bedroom



bedroom



Hanging wardrobe



WC



WC



washing machine

the house

[Favourite photo gallery - 1](#)



Jan 2019



Jan 2019



Jan 2019



Jan 2019

[Favourite photo gallery - 2](#)



Jan 2019



Jan 2019

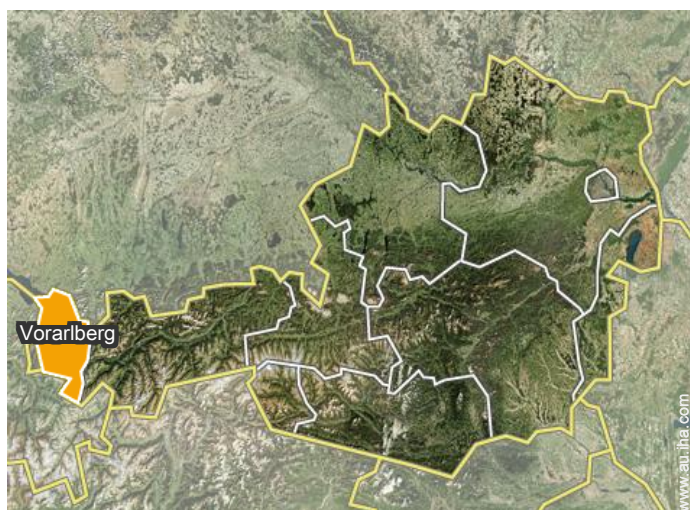


Jan 2019




Jan 2019

Location



Location & Access

" Rheintal motorway A14 - exit Montafon in Bludenz - Silvretta - Bundesstraße of B188 RichtungSchruns - except floors 23. "

 GPS coordinates in degrees, minutes, seconds: Latitude 47°6'3"N - Longitude 9° 52'8"E ([Dwelling](#))

Address

→ Ferien und Erholungsdorf Außerböden
Außerböden 21
6771 Bartholomäberg

• Motorway (junction) A14

→ Bludenz, Vorarlberg, Austria
→ Distance : 7,5km
→ Time : 10'

• Train station Vandans

→ Vandans, Vorarlberg, Austria
→ Distance : 500m
→ Time : 5'

- Schruns : (5km)
- Bludenz : (10km)

- Feldkirch : (28km)

Contact

Spoken languages



Holiday lettings Bartholomäberg - Austria "Ferienwohnung Herold im Ferien- und Erho"

10
[Book now](#)

Availability calendar - from : june 2019

June	Sa	Su	M	Tu	W	Th	F	Sa	Su	M	Tu	W	Th	F	Sa	Su	M	Tu	W	Th	F	Sa	Su	M	Tu	W	Th	F	Sa	Su
2019	1	2	3	4	5	6	7	8	9	10	11	12	13	14	15	16	17	18	19	20	21	22	23	24	25	26	27	28	29	30

Jul	M	Tu	W	Th	F	Sa	Su	M	Tu	W	Th	F	Sa	Su	M	Tu	W	Th	F	Sa	Su	M	Tu	W	Th	F	Sa	Su	M	Tu	W
2019	1	2	3	4	5	6	7	8	9	10	11	12	13	14	15	16	17	18	19	20	21	22	23	24	25	26	27	28	29	30	31

Aug	Th	F	Sa	Su	M	Tu	W	Th	F	Sa	Su	M	Tu	W	Th	F	Sa	Su	M	Tu	W	Th	F	Sa	Su	M	Tu	W	Th	F	Sa
2019	1	2	3	4	5	6	7	8	9	10	11	12	13	14	15	16	17	18	19	20	21	22	23	24	25	26	27	28	29	30	31

Sep	Su	M	Tu	W	Th	F	Sa	Su	M	Tu	W	Th	F	Sa	Su	M	Tu	W	Th	F	Sa	Su	M	Tu	W	Th	F	Sa	Su	M
2019	1	2	3	4	5	6	7	8	9	10	11	12	13	14	15	16	17	18	19	20	21	22	23	24	25	26	27	28	29	30

Oct	Tu	W	Th	F	Sa	Su	M	Tu	W	Th	F	Sa	Su	M	Tu	W	Th	F	Sa	Su	M	Tu	W	Th	F	Sa	Su	M	Tu	W	Th
2019	1	2	3	4	5	6	7	8	9	10	11	12	13	14	15	16	17	18	19	20	21	22	23	24	25	26	27	28	29	30	31

Nov	F	Sa	Su	M	Tu	W	Th	F	Sa	Su	M	Tu	W	Th	F	Sa	Su	M	Tu	W	Th	F	Sa	Su	M	Tu	W	Th	F	Sa
2019	1	2	3	4	5	6	7	8	9	10	11	12	13	14	15	16	17	18	19	20	21	22	23	24	25	26	27	28	29	30

Dec	Su	M	Tu	W	Th	F	Sa	Su	M	Tu	W	Th	F	Sa	Su	M	Tu	W	Th	F	Sa	Su	M	Tu	W	Th	F	Sa	Su	M	Tu
2019	1	2	3	4	5	6	7	8	9	10	11	12	13	14	15	16	17	18	19	20	21	22	23	24	25	26	27	28	29	30	31

Jan	W	Th	F	Sa	Su	M	Tu	W	Th	F	Sa	Su	M	Tu	W	Th	F	Sa	Su	M	Tu	W	Th	F	Sa	Su	M	Tu	W	Th	F
2020	1	2	3	4	5	6	7	8	9	10	11	12	13	14	15	16	17	18	19	20	21	22	23	24	25	26	27	28	29	30	31

Feb	Sa	Su	M	Tu	W	Th	F	Sa	Su	M	Tu	W	Th	F	Sa	Su	M	Tu	W	Th	F	Sa	Su	M	Tu	W	Th	F	Sa	
2020	1	2	3	4	5	6	7	8	9	10	11	12	13	14	15	16	17	18	19	20	21	22	23	24	25	26	27	28	29	

Mar	Su	M	Tu	W	Th	F	Sa	Su	M	Tu	W	Th	F	Sa	Su	M	Tu	W	Th	F	Sa	Su	M	Tu	W	Th	F	Sa	Su	M	Tu
2020	1	2	3	4	5	6	7	8	9	10	11	12	13	14	15	16	17	18	19	20	21	22	23	24	25	26	27	28	29	30	31

Low season
 Reserved
 High season
 Mid season
 Promotional period



Holiday lettings Vorarlberg - Bartholomäberg "Ferienwohnung Herold im Ferien- und Erho"

11
[Book now](#)

Availability calendar - from : march 2020

Apr	W	Th	F	Sa	Su	M	Tu	W	Th	F	Sa	Su	M	Tu	W	Th	F	Sa	Su	M	Tu	W	Th	F	Sa	Su	M	Tu	W	Th
2020	1	2	3	4	5	6	7	8	9	10	11	12	13	14	15	16	17	18	19	20	21	22	23	24	25	26	27	28	29	30
	-	-	-	-	-	-	-	-	-	-	-	-	-	-	-	-	-	-	-	-	-	-	-	-	-	-	-	-	-	-

May	F	Sa	Su	M	Tu	W	Th	F	Sa	Su	M	Tu	W	Th	F	Sa	Su	M	Tu	W	Th	F	Sa	Su							
2020	1	2	3	4	5	6	7	8	9	10	11	12	13	14	15	16	17	18	19	20	21	22	23	24	25	26	27	28	29	30	31
	-	-	-	-	-	-	-	-	-	-	-	-	-	-	-	-	-	-	-	-	-	-	-	-	-	-	-	-	-	-	

- Low season
- Reserved
- High season
- Mid season
- Promotional period

[Month : Next >>](#)

Rental rates - Flat-Apartments - from 1 to 6 Person(s)

Rates	Night	Weekend	week	2 weeks	Month
 Low season	\$A118* (Saturday) > 7	-	\$A827* (Saturday)	-	-
 Mid season	\$A134* (Saturday) > 7	-	\$A937* (Saturday)	-	-
 High season	\$A189* (Saturday) > 7	-	\$A1323* (Saturday)	-	-
 Promotional period	\$A276* (Saturday) > 7	-	\$A1929* (Saturday)	-	-

(Check-in day) > Minimum Night

[Book now](#)

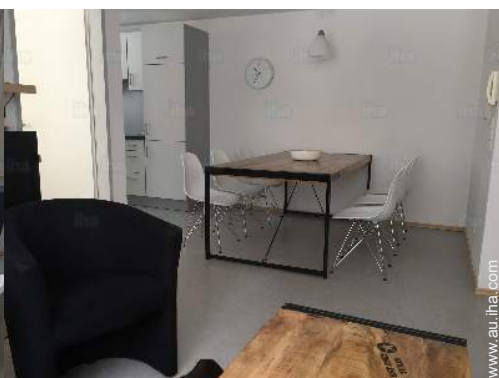




living room



living room



dining area



the house



living room

Booking conditions

• Reservation

- Payment made upon reservation : 20% of rental sum
- Payment balance : 1 month before the stay

• rentals

- Service charges included
- Day tax included
- Cleaning charge levy on departure : \$A110*
- Anticipated supplement for :
 - supplementary bed(s)

Accepted methods of payment

- Bank transfer (wire) • PayPal

[▶ Book now](#)

[▶ Contact the owner](#)

Contact directly the property owners

www.au.ih.com

Advert No.

4565

[>> Book now <<](#)

Contact

Spoken languages



* Converted at the rate indicated : €100 = \$116.85 = £89 = \$A157.48

Advert No. 4565

www.au.ih.com

