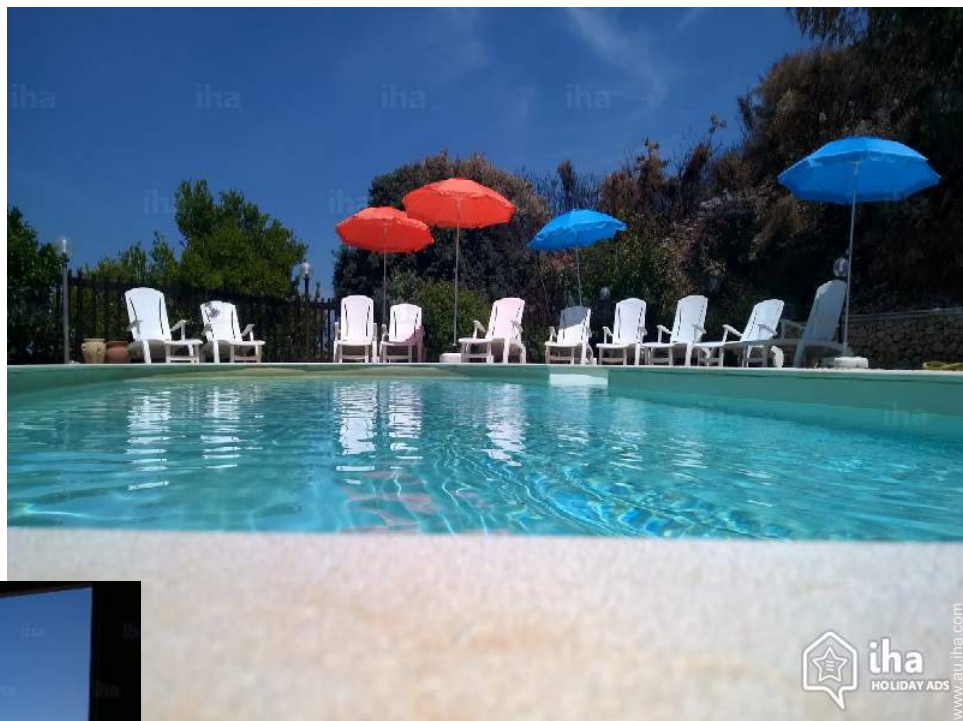


# Holiday lettings

## Castellammare del Golfo

### "Casavacanzevalentina"



**Residence**, semi-detached, 2 floors, shared entrance, in a(an) Private property

**Setting** : suitable for a relaxing break, seaside

**Capacity** : from 2 to > 30 person (s)

**Bedroom(s)** : 16

**Room(s)** : 8

Castellammare del Golfo - Province of Trapani (TP) - Sicily  
Italy

Advert No. 18188

[www.au.iha.com](http://www.au.iha.com)



## Holiday lettings



Residence, semi-detached, 2 floors, shared entrance, in a(an) Private property

- **Ideal for all age groups**
- **View :** panoramic, sea/ocean, mountain, country side, farmland, fantastic sunset
- **Setting :** suitable for a relaxing break, seaside
- **Exposure :** North-west

## Assets

- **Swimming pool :**  
Private swimming-pool, oval (length 11m, width 5m), illuminated, steps in, outside shower (open from '01 may' till '30 september')
- **Parking :**  
Parking uncovered : internal, 10 reserved bay.
- **Advantages :**  
Table football, ping-pong table

## Surroundings & location



Seaside



Fishing

### Leisure

- **Leisure activities less than 20 km / 12 miles :**

Bathing, snorkelling, scuba diving, tennis, coastal/forest paths, boat trips, fishing, angling, spear fishing

- **Supervised :**

Sailing school, dive school, tennis school

- **Attractions and relaxation :**

Bar/pub, discotheque, restaurant, cinema, open air summer cinema, park and garden, leisure park, nature reserve, historical site, antiques & bric-a-brac, local craftshop, thermal baths, beauticians

### Surroundings

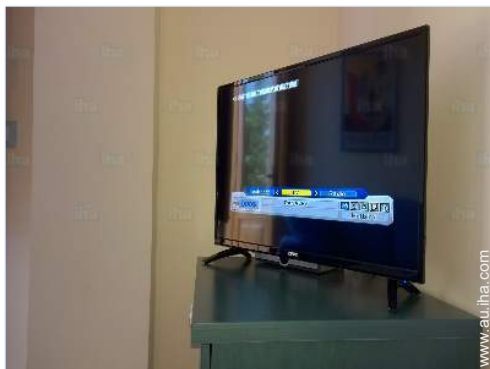
- **Locality :**

Sea/ocean 2km  
Sandy beach 2km  
Shingle beach 7,5km  
Rocky beach 10km  
Nudist beach 10km  
Creek 10km  
Public tennis court 800m  
Cliff 10km  
Slipway 4km

- **Amenities :**

Village centre 1,5km  
Bus pick up point beach <50m  
Bike/mountain bike hire 1km  
Scooter/motorbike hire 1km  
Car rental 1km  
Boat rental 2,5km  
Scuba diving material hire 2,5km  
Breadshop 1,5km  
Supermarket 1,5km  
Internet cafe 1km  
Post office 2km  
Bank 2km  
Chemist 1,5km



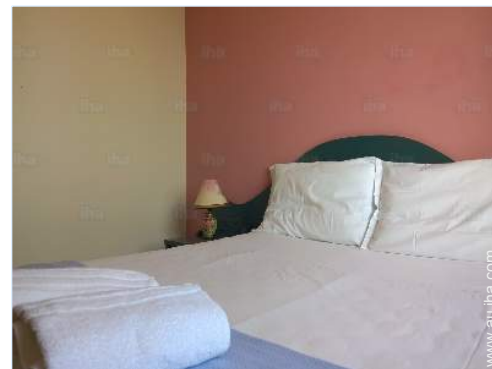


### Interior

- **Receive up to :**  
from 2 to > 30 person(s)
- **Liveable floor area :**  
350m<sup>2</sup>
- **Interior layout :**  
8 Room(s), 16 bedroom(s), bathroom, shower room, WC, living room, Kitchen Area, cosy nook, reception hall, veranda
- **Sleeps - bed(s) :**  
8 double bed(s), 8 sofa bed(s) 2 pers, 2 possible extra bed(s)
- **Guest facilities :**  
T.V., t.v points, wardrobe, cupboard, Hanging wardrobe, safe deposit box, hair dryer, fly screens, fully air conditioned, electric heating
- **Appliances :**  
Crockery/cutlery, kitchen utensils, cafetiere, electric hobs, micro-wave oven, refridgerator, freezer, iron, ironing board

### Exterior

- **Ground surface :**  
2 ha
- **Outside accommodation :**  
Terrace 45m<sup>2</sup>, covered terrace 25m<sup>2</sup>, roof terrace 30m<sup>2</sup>, balcony 10m<sup>2</sup>
- **Outside setting :**  
Garden > 1000m<sup>2</sup>, ornamental lake
- **Outside amenities :**  
Gas BBQ, garden table(s), garden seat(s), parasol, 15 sun recliner(s), outside shower facilities



### Services

- **Washing :**  
Sheets (1 X / per week), Towels (1 X / per week), Blanket(s), Pillows
- **House :**  
Cleaning on departure, Garden/swimming pool maintenance, Caretaker/concierge, Parking

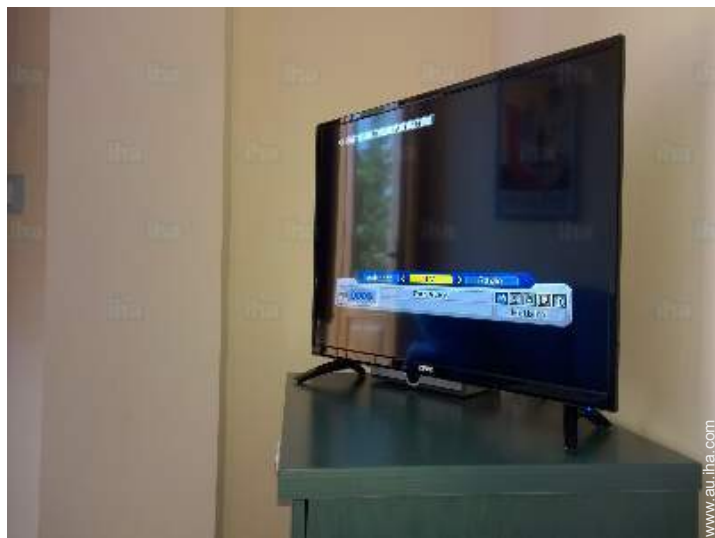
### For your guidance

- **For your guidance**  
Children welcome  
Pets accepted under certain conditions (ask the owner)  
Non smoking rental, mobile telephone network coverage  
Water : hot/cold  
Local voltage supply : 220-240V / 50Hz  
Electricity supply : mains
- **Handicapped people welcome**  
Wheelchair access





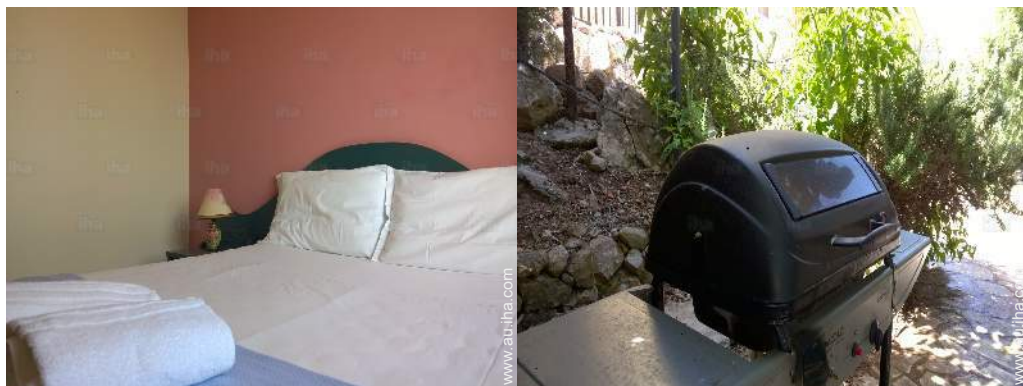
Photo album - 1



Holiday lettings  
Province of Trapani - Castellammare del Golfo  
"Casavacanzevalentina"

5  
[Book now](#)

Photo album - 2



Advert No. 18188

[www.au.iha.com](http://www.au.iha.com)



>> HOLIDAY LETTINGS

BOOK DIRECT WITH THE OWNERS



Location



Location & Access



GPS coordinates in degrees, minutes, seconds: Latitude 38°0'13.91"N - Longitude 12°53'26.74"E (Dwelling)

Address

→ contrada bocca della carrubba  
91014 Castellammare del Golfo

● Airport Palermo

→ Palermo, Province of Palermo, Sicily, Italy

→ Distance : 40km  
→ Time : 30'

● Sea port Palermo

→ Palermo, Province of Palermo, Sicily, Italy

→ Distance : 65km  
→ Time : 40'

● Airport Trapani Birgi

→ Trapani, Province of Trapani, Sicily, Italy

→ Distance : 34km  
→ Time : 20'

- Scopello : (10km)
- Palermo : (60km)
- San Vito Lo Capo : (36km)

Contact

Spoken languages



# Holiday lettings Castellammare del Golfo - Italy "Casavacanzevalentina"

7  
[Book now](#)

Availability calendar - from : june 2019

June	Sa	Su	M	Tu	W	Th	F	Sa	Su	M	Tu	W	Th	F	Sa	Su	M	Tu	W	Th	F	Sa	Su	M	Tu	W	Th	F	Sa	Su	
2019	1	2	3	4	5	6	7	8	9	10	11	12	13	14	15	16	17	18	19	20	21	22	23	24	25	26	27	28	29	30	
																									-	-	-	-	-	-	-

Jul	M	Tu	W	Th	F	Sa	Su	M	Tu	W	Th	F	Sa	Su	M	Tu	W	Th	F	Sa	Su	M	Tu	W	Th	F	Sa	Su	M	Tu	W
2019	1	2	3	4	5	6	7	8	9	10	11	12	13	14	15	16	17	18	19	20	21	22	23	24	25	26	27	28	29	30	31
	-	-	-	-	-	-	-	-	-	-	-	-	-	-	-	-	-	-	-	-	-	-	-	-	-	-	-	-	-	-	-

Aug	Th	F	Sa	Su	M	Tu	W	Th	F	Sa	Su	M	Tu	W	Th	F	Sa	Su	M	Tu	W	Th	F	Sa	Su	M	Tu	W	Th	F	Sa
2019	1	2	3	4	5	6	7	8	9	10	11	12	13	14	15	16	17	18	19	20	21	22	23	24	25	26	27	28	29	30	31
	-	-	-	-	-	-	-	-	-	-	-	-	-	-	-	-	-	-	-	-	-	-	-	-	-	-	-	-	-	-	-

Sep	Su	M	Tu	W	Th	F	Sa	Su	M	Tu	W	Th	F	Sa	Su	M	Tu	W	Th	F	Sa	Su	M	Tu	W	Th	F	Sa	Su	M
2019	1	2	3	4	5	6	7	8	9	10	11	12	13	14	15	16	17	18	19	20	21	22	23	24	25	26	27	28	29	30
	-	-	-	-	-	-	-	-	-	-	-	-	-	-	-	-	-	-	-	-	-	-	-	-	-	-	-	-	-	-

Oct	Tu	W	Th	F	Sa	Su	M	Tu	W	Th	F	Sa	Su	M	Tu	W	Th	F	Sa	Su	M	Tu	W	Th	F	Sa	Su	M	Tu	W	Th
2019	1	2	3	4	5	6	7	8	9	10	11	12	13	14	15	16	17	18	19	20	21	22	23	24	25	26	27	28	29	30	31
	-	-	-	-	-	-	-	-	-	-	-	-	-	-	-	-	-	-	-	-	-	-	-	-	-	-	-	-	-	-	-

Nov	F	Sa	Su	M	Tu	W	Th	F	Sa	Su	M	Tu	W	Th	F	Sa	Su	M	Tu	W	Th	F	Sa	Su	M	Tu	W	Th	F	Sa
2019	1	2	3	4	5	6	7	8	9	10	11	12	13	14	15	16	17	18	19	20	21	22	23	24	25	26	27	28	29	30
	-	-	-	-	-	-	-	-	-	-	-	-	-	-	-	-	-	-	-	-	-	-	-	-	-	-	-	-	-	-

Dec	Su	M	Tu	W	Th	F	Sa	Su	M	Tu	W	Th	F	Sa	Su	M	Tu	W	Th	F	Sa	Su	M	Tu	W	Th	F	Sa	Su	M	Tu
2019	1	2	3	4	5	6	7	8	9	10	11	12	13	14	15	16	17	18	19	20	21	22	23	24	25	26	27	28	29	30	31
	-	-	-	-	-	-	-	-	-	-	-	-	-	-	-	-	-	-	-	-	-	-	-	-	-	-	-	-	-	-	-

Jan	W	Th	F	Sa	Su	M	Tu	W	Th	F	Sa	Su	M	Tu	W	Th	F	Sa	Su	M	Tu	W	Th	F	Sa	Su	M	Tu	W	Th	F
2020	1	2	3	4	5	6	7	8	9	10	11	12	13	14	15	16	17	18	19	20	21	22	23	24	25	26	27	28	29	30	31
	-	-	-	-	-	-	-	-	-	-	-	-	-	-	-	-	-	-	-	-	-	-	-	-	-	-	-	-	-	-	-

Feb	Sa	Su	M	Tu	W	Th	F	Sa	Su	M	Tu	W	Th	F	Sa	Su	M	Tu	W	Th	F	Sa	Su	M	Tu	W	Th	F	Sa
2020	1	2	3	4	5	6	7	8	9	10	11	12	13	14	15	16	17	18	19	20	21	22	23	24	25	26	27	28	29
	-	-	-	-	-	-	-	-	-	-	-	-	-	-	-	-	-	-	-	-	-	-	-	-	-	-	-	-	-

Mar	Su	M	Tu	W	Th	F	Sa	Su	M	Tu	W	Th	F	Sa	Su	M	Tu	W	Th	F	Sa	Su	M	Tu	W	Th	F	Sa	Su	M	Tu
2020	1	2	3	4	5	6	7	8	9	10	11	12	13	14	15	16	17	18	19	20	21	22	23	24	25	26	27	28	29	30	31
	-	-	-	-	-	-	-	-	-	-	-	-	-	-	-	-	-	-	-	-	-	-	-	-	-	-	-	-	-	-	-

Reserved



Holiday lettings  
Province of Trapani - Sicily  
"Casavacanzevalentina"

8  
[Book now](#)

Availability calendar - from : march 2020

Apr	W	Th	F	Sa	Su	M	Tu	W	Th	F	Sa	Su	M	Tu	W	Th	F	Sa	Su	M	Tu	W	Th							
2020	1	2	3	4	5	6	7	8	9	10	11	12	13	14	15	16	17	18	19	20	21	22	23	24	25	26	27	28	29	30
	-	-	-	-	-	-	-	-	-	-	-	-	-	-	-	-	-	-	-	-	-	-	-	-	-	-	-	-	-	

May	F	Sa	Su	M	Tu	W	Th	F	Sa	Su	M	Tu	W	Th	F	Sa	Su	M	Tu	W	Th	F	Sa	Su							
2020	1	2	3	4	5	6	7	8	9	10	11	12	13	14	15	16	17	18	19	20	21	22	23	24	25	26	27	28	29	30	31
	-	-	-	-	-	-	-	-	-	-	-	-	-	-	-	-	-	-	-	-	-	-	-	-	-	-	-	-	-	-	

Reserved

[Month : Next >>](#)

Rental rates - Residence - from 2 to > 30 Person(s)

Rates	Night	Weekend	week	2 weeks	Month
<input type="checkbox"/> Low season	\$A93* > 2	\$A186*	\$A567*	\$A1101*	\$A2046*
<input type="checkbox"/> Mid season	\$A124*	\$A203*	\$A772*	\$A1494*	\$A2976*
<input type="checkbox"/> High season	\$A156*	\$A298*	\$A1022*	\$A2044*	\$A4088*

> Minimum Night

[Book now](#)

Booking conditions

• Reservation

→ Payment made upon reservation : 30% of rental sum  
→ Deposit required : \$A157\*

• rentals

→ Service charges included  
→ Cleaning charge levy on departure : \$A31\*  
→ Anticipated supplement for :  
- supplementary bed(s)

[▶ Book now](#)

[▶ Contact the owner](#)

Accepted methods of payment

• International Money Order • Bank transfer (wire) • Cheque • Bankers draft • PayPal • Cash

Contact directly the property owners

[www.au.iha.com](http://www.au.iha.com)  
Advert No.  
18188  
[>> Book now <<](#)

Contact

Spoken languages



\* Converted at the rate indicated : €100 = \$116.85 = £89 = \$A157.48

Advert No. 18188

[www.au.iha.com](http://www.au.iha.com)

