

Holiday lettings Cavalière "Plein Sud"

Superb apartment (duplex) with terrace full South Sea side (180 ° view), on the large and beautiful beach of Cavalière and Cap Nègre.



Flat-Apartments 2nd floor in a(an)
Apartment block 2 floors

Setting : waterfront

Capacity : from 1 to 4 person(s)

Bedroom(s) : 1

Room(s) : 4

Cavalière - Var (83) - Provence-Alpes-Côte d'Azur (French Riviera)
France

Reservation : +32 (0) 26522511 (Belgium)

Advert No. 1669

www.au.ih.com



Holiday lettings



Flat-Apartments 2nd floor in a(an)
Apartment block 2 floors

- **Ideal for couples, family**
- **View :** panoramic, unobscured, not overlooked, sea/ocean, nightlights
- **Setting :** waterfront
- **Exposure :** South

" Apartment equipped with a table and chairs for the terrace. Electrical component of the terrace. The area is about 35 square meters. A separate bedroom on the floor with bed double. A sofa bed on the ground floor 2 seats. Very bright living room. Kitchen: dishwasher, microwave, two refrigerators, four Electric Hob, extractor hood, toaster, kettle, coffee maker etc. A bathroom with shower, dry towels, washing machine, weighing scale and hairdryer. Television flat screen TV (TNT). Radio and CD. Air conditioning or heating. Plenty of storage. Completely renovated in 2012. Southern exposure. This apartment being sea front you have a direct access to the building on the beach. Very nice decoration. Ample free public parking. Also for rent a studio area of about 20 m2 on the same floor. Sofa-bed 2 persons and 1 extra bed for one person. A kitchen, bathroom (shower and bath), toilet etc. "

Assets

- **Parking :**
Parking uncovered

Benefits :
Direct access to the beach

Surroundings & location



Seaside

" St-Tropez is 20 km. Le Lavandou is 5 km away. Facing the îles d'Or (Porquerolles, Port Cros and Levant Island), the beach of Cavalière offers an incomparable setting of unspoilt and wild nature. Its underwater world of rare beauty are sought after by lovers of scuba diving. All nautical and recreational activities for children and adults to the beach or the surrounding area. "

Leisure

- **Leisure activities less than 20 km / 12 miles :**

Bathing, pedalo, snorkelling, scuba diving, banana boat, water skiing, jet ski, surfing, windsurfing, sailing, kite surfing, golf, tennis, coastal/forest paths, boat trips, mini-golf, pétanque pitch

- **Supervised :**

Sailing school, dive school

- **Attractions and relaxation :**

Bar/pub, discotheque, restaurant, cinema, park and garden, leisure park, zoo/animal park, nature reserve, local craftshop

Surroundings

- **Locality :**

Sea/ocean <50m
Sandy beach <50m
Nudist beach 800m
Public tennis court 1,5km
18 hole golf course 20km
Surfing spots <50m
Marina 7,5km
Jetski slipway <50m

- **Amenities :**

Village centre 7,5km
Bike/mountain bike hire 100m
Scooter/motorbike hire 100m
Breadshop <50m
Local shops <50m
Hairdressing salon <50m
Post office 100m
Cash point <50m



Benefits



view from the flat



parasol

Exterior

- **Outside accommodation :**
Terrace 3m², sundeck 3m²
- **Outside amenities :**
Garden table(s), 4 garden seat(s), parasol



Interior layout

Interior

- **Receive up to :**
from 1 to 4 person(s)
- **Liveable floor area :**
35m²
- **Interior layout :**
4 Room(s), 1 bedroom(s), 1 bathroom, 1 WC, living room 20m², Kitchen Area, dining area
- **Sleeps - bed(s) :**
1 double bed(s), 1 sofa bed(s) 2 pers
- **Guest facilities :**
T.V., hi-fi system, t.v points, wardrobe, Hanging wardrobe, radio alarmclock, hair dryer, heated towel rail, fully air conditioned, Glazed in area, Curtains, Double glazed, electric shutters, digipad entry system
- **Appliances :**
Crockery/cuttlery, kitchen utensils, cafetiere, electric kettle, toaster, electric cooker, electric hobs, micro-wave oven, extractor hood, refridgerator, freezer, dish washer, washing machine, vacuum cleaner

Services

- **Washing :**
Blanket(s), Pillows
- **House :**
Caretaker/concierge

For your guidance

- **For your guidance**
Children welcome
Pets accepted under certain conditions (ask the owner)
Mobile telephone network coverage
Water : hot/cold
Local voltage supply : 220-240V / 50Hz
Electricity supply : mains



direct access to the beach

Photo album - 1



view from the flat



Benefits



parasol



direct access to the beach



Interior layout

Photo album - 2



living room



the decor



double bed(s)



view from the living room



interior



bathroom



bathroom



windsurfing

Photo album - 3



Spring



tennis



view from the flat



Benefits



Parking



view from the terrace

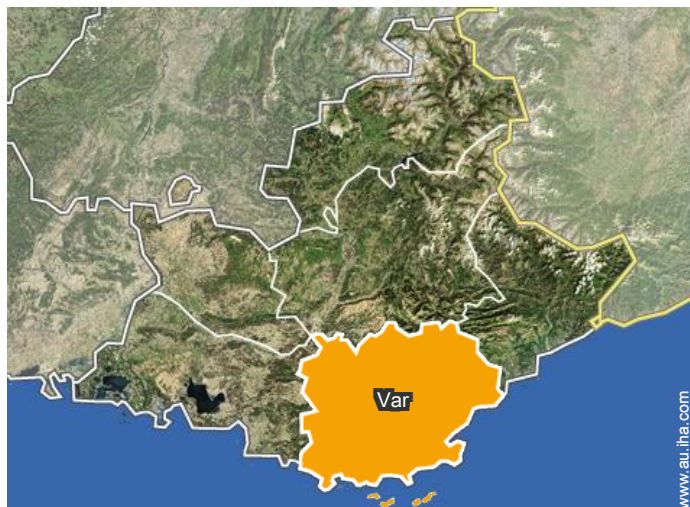


summer sports nearby




Summer

Location



Location & Access

" Either by car or by TGV (TOULON) or by plane (airport of Hyères). The building is located 5 kilometres from LE LAVANDOU and 20 kilometres from SAINT-TROPEZ. "

 GPS coordinates in degrees, minutes, seconds: Latitude 43°9'7"N - Longitude 6°25'43"E (Dwelling)

Address

→ Avenue du Cap Nègre 12
83980 Cavalière

• Airport Toulon Hyères

→ Toulon, Var, Provence-Alpes-Côte d'Azur (French Riviera), France
→ Distance : 22km

• Toulon : (47km)

Contact

Spoken languages



Holiday lettings

Var - Provence-Alpes-Côte d'Azur (French Riviera)

"Plein Sud"

Availability calendar - from : june 2019

June	Sa	Su	M	Tu	W	Th	F	Sa	Su	M	Tu	W	Th	F	Sa	Su	M	Tu	W	Th	F	Sa	Su	M	Tu	W	Th	F	Sa	Su
2019	1	2	3	4	5	6	7	8	9	10	11	12	13	14	15	16	17	18	19	20	21	22	23	24	25	26	27	28	29	30

Jul	M	Tu	W	Th	F	Sa	Su	M	Tu	W	Th	F	Sa	Su	M	Tu	W	Th	F	Sa	Su	M	Tu	W	Th	F	Sa	Su	M	Tu	W
2019	1	2	3	4	5	6	7	8	9	10	11	12	13	14	15	16	17	18	19	20	21	22	23	24	25	26	27	28	29	30	31
	-	-	-	-	-	-	-	-	-	-	-	-	-	-	-	-	-	-	-	-	-	-	-	-	-	-	-	-	-	-	-

Aug	Th	F	Sa	Su	M	Tu	W	Th	F	Sa	Su	M	Tu	W	Th	F	Sa	Su	M	Tu	W	Th	F	Sa	Su	M	Tu	W	Th	F	Sa
2019	1	2	3	4	5	6	7	8	9	10	11	12	13	14	15	16	17	18	19	20	21	22	23	24	25	26	27	28	29	30	31
	-	-	-	-	-	-	-	-	-	-	-	-	-	-	-	-	-	-	-	-	-	-	-	-	-	-	-	-	-	-	-

Sep	Su	M	Tu	W	Th	F	Sa	Su	M	Tu	W	Th	F	Sa	Su	M	Tu	W	Th	F	Sa	Su	M	Tu	W	Th	F	Sa	Su	M
2019	1	2	3	4	5	6	7	8	9	10	11	12	13	14	15	16	17	18	19	20	21	22	23	24	25	26	27	28	29	30
	-	-	-	-	-	-	-	-	-	-	-	-	-	-	-	-	-	-	-	-	-	-	-	-	-	-	-	-	-	-

Oct	Tu	W	Th	F	Sa	Su	M	Tu	W	Th	F	Sa	Su	M	Tu	W	Th	F	Sa	Su	M	Tu	W	Th	F	Sa	Su	M	Tu	W	Th
2019	1	2	3	4	5	6	7	8	9	10	11	12	13	14	15	16	17	18	19	20	21	22	23	24	25	26	27	28	29	30	31
	-	-	-	-	-	-	-	-	-	-	-	-	-	-	-	-	-	-	-	-	-	-	-	-	-	-	-	-	-	-	-

Nov	F	Sa	Su	M	Tu	W	Th	F	Sa	Su	M	Tu	W	Th	F	Sa	Su	M	Tu	W	Th	F	Sa	Su	M	Tu	W	Th	F	Sa
2019	1	2	3	4	5	6	7	8	9	10	11	12	13	14	15	16	17	18	19	20	21	22	23	24	25	26	27	28	29	30
	-	-	-	-	-	-	-	-	-	-	-	-	-	-	-	-	-	-	-	-	-	-	-	-	-	-	-	-	-	-

Dec	Su	M	Tu	W	Th	F	Sa	Su	M	Tu	W	Th	F	Sa	Su	M	Tu	W	Th	F	Sa	Su	M	Tu	W	Th	F	Sa	Su	M	Tu
2019	1	2	3	4	5	6	7	8	9	10	11	12	13	14	15	16	17	18	19	20	21	22	23	24	25	26	27	28	29	30	31
	-	-	-	-	-	-	-	-	-	-	-	-	-	-	-	-	-	-	-	-	-	-	-	-	-	-	-	-	-	-	-

Jan	W	Th	F	Sa	Su	M	Tu	W	Th	F	Sa	Su	M	Tu	W	Th	F	Sa	Su	M	Tu	W	Th	F	Sa	Su	M	Tu	W	Th	F
2020	1	2	3	4	5	6	7	8	9	10	11	12	13	14	15	16	17	18	19	20	21	22	23	24	25	26	27	28	29	30	31
	-	-	-	-	-	-	-	-	-	-	-	-	-	-	-	-	-	-	-	-	-	-	-	-	-	-	-	-	-	-	-

Feb	Sa	Su	M	Tu	W	Th	F	Sa	Su	M	Tu	W	Th	F	Sa	Su	M	Tu	W	Th	F	Sa	Su	M	Tu	W	Th	F	Sa
2020	1	2	3	4	5	6	7	8	9	10	11	12	13	14	15	16	17	18	19	20	21	22	23	24	25	26	27	28	29
	-	-	-	-	-	-	-	-	-	-	-	-	-	-	-	-	-	-	-	-	-	-	-	-	-	-	-	-	-

Mar	Su	M	Tu	W	Th	F	Sa	Su	M	Tu	W	Th	F	Sa	Su	M	Tu	W	Th	F	Sa	Su	M	Tu	W	Th	F	Sa	Su	M	Tu
2020	1	2	3	4	5	6	7	8	9	10	11	12	13	14	15	16	17	18	19	20	21	22	23	24	25	26	27	28	29	30	31
	-	-	-	-	-	-	-	-	-	-	-	-	-	-	-	-	-	-	-	-	-	-	-	-	-	-	-	-	-	-	-



Holiday lettings Cavalière - France "Plein Sud"

9

[Book now](#)




Availability calendar - from : march 2020

Apr	W	Th	F	Sa	Su	M	Tu	W	Th	F	Sa	Su	M	Tu	W	Th	F	Sa	Su	M	Tu	W	Th							
2020	1	2	3	4	5	6	7	8	9	10	11	12	13	14	15	16	17	18	19	20	21	22	23	24	25	26	27	28	29	30
	-	-	-	-	-	-	-	-	-	-	-	-	-	-	-	-	-	-	-	-	-	-	-	-	-	-	-	-	-	

May	F	Sa	Su	M	Tu	W	Th	F	Sa	Su	M	Tu	W	Th	F	Sa	Su	M	Tu	W	Th	F	Sa	Su							
2020	1	2	3	4	5	6	7	8	9	10	11	12	13	14	15	16	17	18	19	20	21	22	23	24	25	26	27	28	29	30	31
	-	-	-	-	-	-	-	-	-	-	-	-	-	-	-	-	-	-	-	-	-	-	-	-	-	-	-	-	-		

[Month : Next >>](#)

Rental rates - Flat-Apartments - from 1 to 4 Person(s)

Rates	Night	Weekend	week	2 weeks	Month
 Low season	-	-	\$A551* (Saturday)	-	-
 Mid season	-	-	\$A945* (Saturday)	-	-
 High season	-	-	\$A1543* (Saturday)	-	-

(Check-in day)

[Book now](#)

Booking conditions

• Reservation

- Payment made upon reservation : 30% of rental sum
- Payment balance : 3 weeks before the stay
- Deposit required : \$A394*

• rentals

- Service charges included
- Day tax in addition
- Cleaning charge levy on departure : \$A94*

Accepted methods of payment

- International Money Order
- Bank transfer (wire)
- Bankers draft
- Cash

[▶ Book now](#)[▶ Contact the owner](#)

Contact directly the property owners

www.au.ih.com

Advert No.

1669

[>> Book now <<](#)

Contact

Spoken languages



* Converted at the rate indicated : €100 = \$116.85 = £89 = \$A157.48

Advert No. 1669

www.au.ih.com[>> HOLIDAY LETTINGS](#)

BOOK DIRECT WITH THE OWNERS