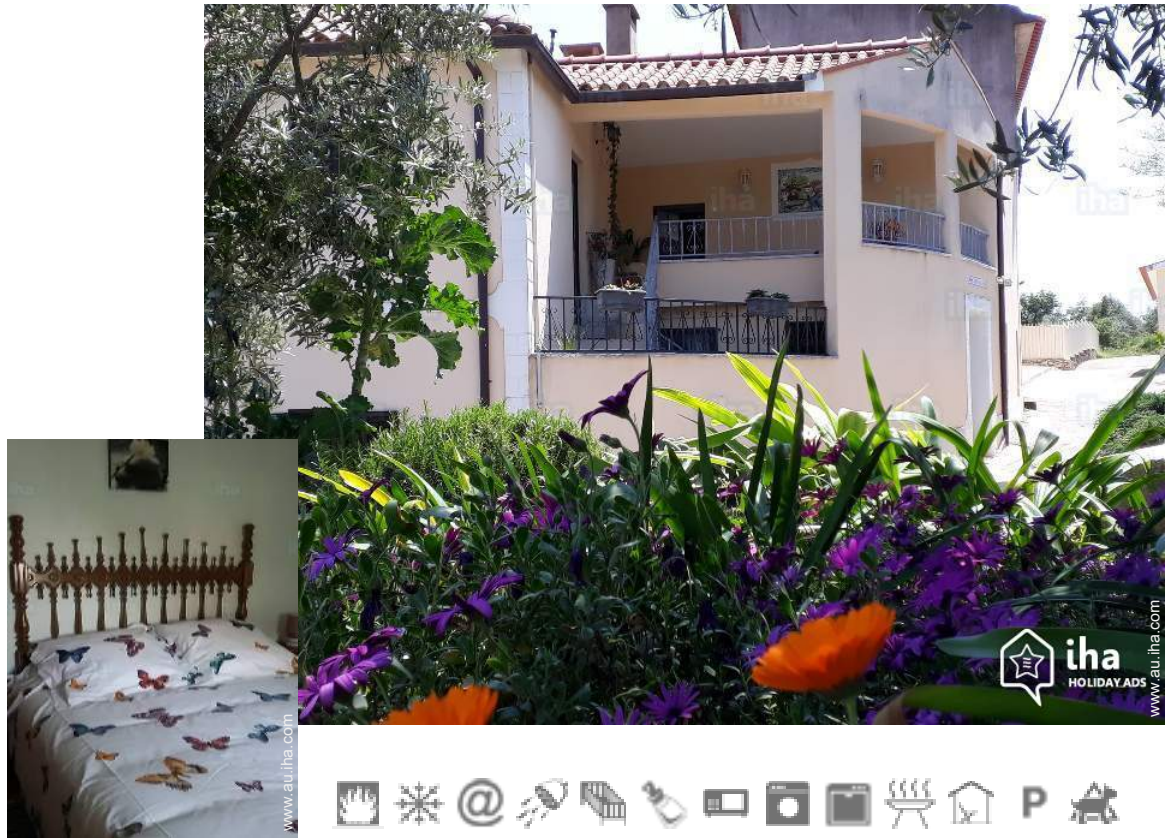


Holiday lettings Chão de Couce Village House

Ideal for rest and for what like calm, vintage and nature. Our House is located on a height overlooking the Valley and on the edge of olive groves. Its not garden with olive grove, lemon



Village House, detached, 1 floor, separate entrance, in a(an) Hamlet

Setting : quiet, tranquil

Capacity : from 1 to 6 person(s)

Bedroom(s) : 3

Room(s) : 5



Meublés de Tourisme

Chão de Couce - District of Leiria - Centro Region (Portugal)
Portugal

Reservation : +33 (0) 672907862 (France)

Advert No. 49125

www.au.ih.com



Holiday lettings



Village House, detached, 1 floor, separate entrance, in a(an) Hamlet

- **Ideal for all age groups, family**
- **View :** panoramic, unobscured, not overlooked, country side, forest, nightlights
- **Setting :** quiet, tranquil

"The House is detached renovated but a can, in its own juice. Designed two separate night areas, it allows privacy for two couples. All comfort. All the equipment security standards. 3 bedrooms, 2 bathrooms, 3 toilets. A reversible air conditioning. These 2 covered terraces invite you a relaxation. "

Assets

- **Parking :**
Parking uncovered : off road.
- **Advantages :**
Ping-pong bats, pétanque set(s)
- **baby equipment :**
Baby chair, baby bath, pushchair



bedroom

Surroundings & location



Countryside Horse riding Fishing Culture

" You can walk by visiting the surrounding area, walk in the forest, points of view. Cultural, religious and historical visits to beautiful villages in shale but also you swim in As Fragas de Sao Simao, Praia das Rocas, Ansião municipal pool, Aquapark of Pombal... And enjoy some good food crafts. "

Leisure

- **Leisure activities less than 20 km / 12 miles :**

Bathing, pedalo, tennis, riding school, pathway, coastal/forest paths, hiking, climbing, mountain bike (path), hang-gliding, paragliding, hunting, acrobanch, fishing

- **Attractions and relaxation :**

Bar/pub, restaurant, cinema, park and garden, leisure park, nature reserve, exhibition centre, historical site, museum, antiques & bric-a-brac, local craftshop, cellar and wine tasting, beauticians

Surroundings

- **Locality :**

Public swimming pool
 Cliff
 River
 Stretch of water
 Lake
 Forest
 Mountain range

- **Amenities :**

Village centre
 Town centre
 Car rental
 Breadshop
 Local shops
 Supermarket
 Hairdressing salon
 Post office
 Bank
 Cash point
 Chemist
 Doctor
 Nurse
 Hospital
 Dispensing clinic



bedroom



bedroom



bedroom

Interior

- **Receive up to :**

from 1 to 6 person(s)

- **Liveable floor area :**

100m²

- **Interior layout :**

5 Room(s), 3 bedroom(s), 2 shower room, 3 WC, sitting room, separate kitchen, dining area, cosy nook, tv room, pantry

- **Sleeps - bed(s) :**

1 double bed(s), 1 king-size bed(s), 2 twin beds (standard), 1 baby cot(s)

- **Guest facilities :**

Fireplace, board games, book collection, wifi, wardrobe, Hanging wardrobe, hair dryer, fully air conditioned, mobile cool air fan, electric heating, Curtains

- **Appliances :**

Crockery/cutlery, kitchen utensils, cafetiere, electric coffee maker, electric kettle, toaster, juicer, food processor, electric raclette set, gas cooker, micro-wave oven, extractor hood, refrigerator, freezer, dish washer, washing machine, vacuum cleaner, iron, ironing board

Exterior

- **Ground surface :**

1000m²

- **Outside accommodation :**

Terrace, covered terrace

- **Outside setting :**

Garden, olive grove

- **Outside amenities :**

Summer kitchen, summer living area, BBQ, garden table(s), garden seat(s), garden seated area, chaise(s) longue(s), sun recliner(s), outside toilet facilities



shower room

Services

- **Washing :**

Sheets supplement (1 X / per week +\$A16*), Towels supplement (+\$A16*), Linen, Quilt (s), Pillows

- **House :**

Cleaning on departure supplement (+\$A31*)

For your guidance

- **For your guidance**

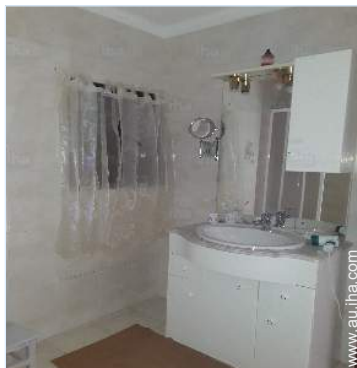
No children under 2 years old

Pets accepted under certain conditions (ask the owner)

Water : hot/cold

Local voltage supply : 220-240V / 50Hz

Electricity supply : mains



shower room

Photo album - 1



bedroom



bedroom



bedroom



bedroom



shower room

Photo album - 2



shower room



tv room



sitting room



kitchen



dining area



view from the terrace



summer living area



covered terrace



covered terrace

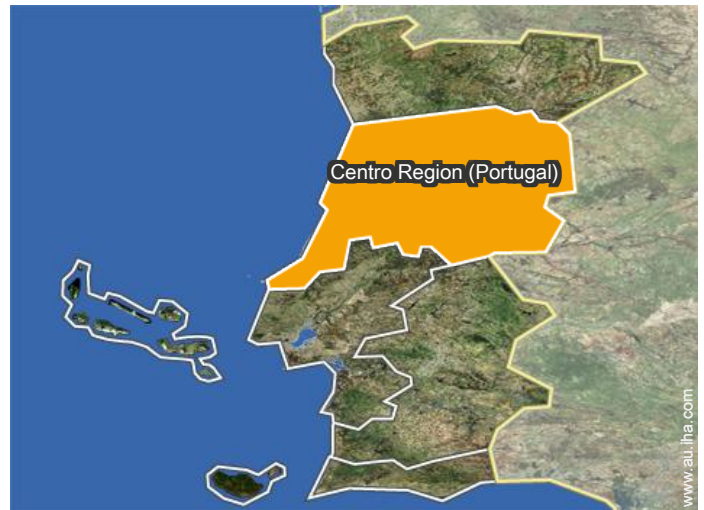
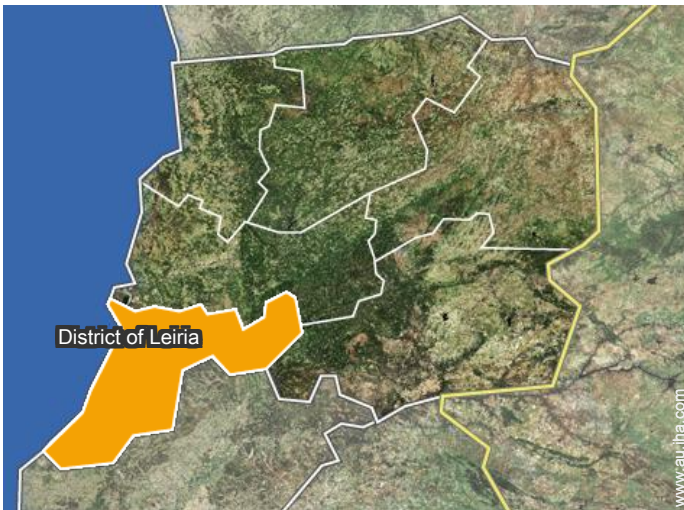


covered terrace



garden

Location



Location & Access

" In the center of Portugal, o Alto da Serra do Mouro is a small and quiet hamlet on a Summit and belonging to the municipality of Chao de Couce and the canton of Ansião. "



GPS coordinates in degrees, minutes, seconds: Latitude 39°53'43"N - Longitude 8° 23'39"W (Dwelling)

Address

→ Serra do Mouro
3240 Chão de Couce

• Motorway (junction) A13

→ Almofala de Baixo, District of Leiria,
Centro Region (Portugal), Portugal
→ Distance : 3km
→ Time : 10'

- Ansião : (7,5km)
- Figueiró dos Vinhos : (13km)
- Avelar : (7,5km)

Contact

Spoken languages



Holiday lettings Chão de Couce - Portugal Village House

7
[Book now](#)

Availability calendar - from : june 2019

June	Sa	Su	M	Tu	W	Th	F	Sa	Su	M	Tu	W	Th	F	Sa	Su	M	Tu	W	Th	F	Sa	Su	
2019	1	2	3	4	5	6	7	8	9	10	11	12	13	14	15	16	17	18	19	20	21	22	23	24

Jul	M	Tu	W	Th	F	Sa	Su	M	Tu	W	Th	F	Sa	Su	M	Tu	W	Th	F	Sa	Su	M	Tu	W
2019	1	2	3	4	5	6	7	8	9	10	11	12	13	14	15	16	17	18	19	20	21	22	23	24
	-	-	-	-	-	-	-	-	-	-	-	-	-	-	-	-	-	-	-	-	-	-	-	-

Aug	Th	F	Sa	Su	M	Tu	W	Th	F	Sa	Su	M	Tu	W	Th	F	Sa	Su	M	Tu	W	Th	F	Sa
2019	1	2	3	4	5	6	7	8	9	10	11	12	13	14	15	16	17	18	19	20	21	22	23	24
	-	-	-	-	-	-	-	-	-	-	-	-	-	-	-	-	-	-	-	-	-	-	-	-

Sep	Su	M	Tu	W	Th	F	Sa	Su	M	Tu	W	Th	F	Sa	Su	M	Tu	W	Th	F	Sa	Su	M
2019	1	2	3	4	5	6	7	8	9	10	11	12	13	14	15	16	17	18	19	20	21	22	23
	-	-	-	-	-	-	-	-	-	-	-	-	-	-	-	-	-	-	-	-	-	-	-

Oct	Tu	W	Th	F	Sa	Su	M	Tu	W	Th	F	Sa	Su	M	Tu	W	Th	F	Sa	Su	M	Tu	W	Th
2019	1	2	3	4	5	6	7	8	9	10	11	12	13	14	15	16	17	18	19	20	21	22	23	
	-	-	-	-	-	-	-	-	-	-	-	-	-	-	-	-	-	-	-	-	-	-	-	

Nov	F	Sa	Su	M	Tu	W	Th	F	Sa	Su	M	Tu	W	Th	F	Sa	Su	M	Tu	W	Th	F	Sa
2019	1	2	3	4	5	6	7	8	9	10	11	12	13	14	15	16	17	18	19	20	21	22	23
	-	-	-	-	-	-	-	-	-	-	-	-	-	-	-	-	-	-	-	-	-	-	-

Dec	Su	M	Tu	W	Th	F	Sa	Su	M	Tu	W	Th	F	Sa	Su	M	Tu	W	Th	F	Sa	Su	M	Tu
2019	1	2	3	4	5	6	7	8	9	10	11	12	13	14	15	16	17	18	19	20	21	22	23	
	-	-	-	-	-	-	-	-	-	-	-	-	-	-	-	-	-	-	-	-	-	-	-	

Jan	W	Th	F	Sa	Su	M	Tu	W	Th	F	Sa	Su	M	Tu	W	Th	F	Sa	Su	M	Tu	W	Th	F
2020	1	2	3	4	5	6	7	8	9	10	11	12	13	14	15	16	17	18	19	20	21	22	23	
	-	-	-	-	-	-	-	-	-	-	-	-	-	-	-	-	-	-	-	-	-	-	-	

Feb	Sa	Su	M	Tu	W	Th	F	Sa	Su	M	Tu	W	Th	F	Sa	Su	M	Tu	W	Th	F	Sa
2020	1	2	3	4	5	6	7	8	9	10	11	12	13	14	15	16	17	18	19	20	21	22
	-	-	-	-	-	-	-	-	-	-	-	-	-	-	-	-	-	-	-	-	-	-

Mar	Su	M	Tu	W	Th	F	Sa	Su	M	Tu	W	Th	F	Sa	Su	M	Tu	W	Th	F	Sa	Su	M	Tu
2020	1	2	3	4	5	6	7	8	9	10	11	12	13	14	15	16	17	18	19	20	21	22	23	
	-	-	-	-	-	-	-	-	-	-	-	-	-	-	-	-	-	-	-	-	-	-	-	

Reserved



Holiday lettings
District of Leiria - Centro Region (Portugal)
Village House

8
[Book now](#)

Availability calendar - from : march 2020


Apr	W	Th	F	Sa	Su	M	Tu	W	Th	F	Sa	Su	M	Tu	W	Th	F	Sa	Su	M	Tu	W	Th	F	Sa	Su	M	Tu	W	Th
2020	1	2	3	4	5	6	7	8	9	10	11	12	13	14	15	16	17	18	19	20	21	22	23	24	25	26	27	28	29	30
	-	-	-	-	-	-	-	-	-	-	-	-	-	-	-	-	-	-	-	-	-	-	-	-	-	-	-	-	-	

May	F	Sa	Su	M	Tu	W	Th	F	Sa	Su	M	Tu	W	Th	F	Sa	Su	M	Tu	W	Th	F	Sa	Su							
2020	1	2	3	4	5	6	7	8	9	10	11	12	13	14	15	16	17	18	19	20	21	22	23	24	25	26	27	28	29	30	31
	-	-	-	-	-	-	-	-	-	-	-	-	-	-	-	-	-	-	-	-	-	-	-	-	-	-	-	-	-		

Reserved

[Month : Next >>](#)

Rental rates - Village House - from 1 to 6 Person(s)

Rates	Night	Weekend	week	2 weeks	Month
 Low season	-	-	\$A472* (Saturday)	-	-
 High season	-	-	\$A551* (Saturday)	-	-

(Check-in day)

[Book now](#)

Booking conditions

• **Reservation**

- Payment made upon reservation : 25% of rental sum
- Payment balance : on handing over the keys
- Deposit required : \$A315*

• **rentals**

- Service charges included
- Day tax included
- Cleaning charge levy on departure : \$A31*

[▶ Book now](#)

[▶ Contact the owner](#)

Accepted methods of payment

- Cheque • Cash

Contact directly the property owners

www.au.iha.com

Advert No.

49125

[>> Book now <<](#)

Contact

Spoken languages



* Converted at the rate indicated : €100 = \$116.85 = £89 = \$A157.48

Advert No. 49125

www.au.iha.com

