

Holiday lettings Dubrovnik "Lele and aDora"

What make my apartment special. For sure that is host. On coming date I bring to my guests wellcome drink. They can choose what they prefer : fruit juice, red or black wine, beer, something strong as brandy (travarica).



Flat-Apartments ground floor, separate entrance, in a(an) House 2 floors

Setting : seaside, historical

Capacity : from 2 to 4 person(s)

Bedroom(s) : 1

Room(s) : 2



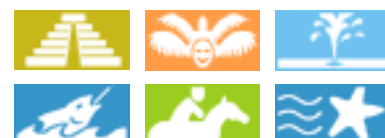
Gay friendly ()
Family Holiday Destinations ()

Dubrovnik - Dubrovnik-Neretva County - Dalmatia
Croatia

Reservation : +385 (0) 20 312541 (Croatia)

Advert No. 66781

www.au.iha.com



Holiday lettings



Flat-Apartments ground floor, separate entrance, in a(an) House 2 floors

- **Ideal for family groups, couples**

- **View :** sea/ocean, garden/park, harbour, town, monument, fantastic sunset

- **Setting :** seaside, historical

- **Exposure :** South-west

" Apartment consists of coridor, bathroom, bedroom, living room with kitchen and terrace. In bedroom is one double bed and in living room there are 2 sofa beds (for one person). Terrace view is garden. Interior is very simply and modern. Kitchen is full equiped. Linen, towels, and all necessary things are included. "

Assets

- **baby equipment :**

Baby chair, baby potty



block of flats

Surroundings & location



Seaside



Horse riding



Fishing



Spa



Festival



Culture

" Families with kids like my apartment because they have large terrace for kids, some small help things for children: smal stand for bathroom, high chair for table, smal bed, smal playground basket, toys, plastic mattresses for the beach, beach towels... "

Leisure

- **Leisure activities less than 20 km / 12 miles :**

Bathing, banana boat, water skiing, surfing, sailing, canoeing, rafting, tennis, mountain bike (path), boat trips, fishing, angling

- **Supervised :**

Tennis school

- **Attractions and relaxation :**

Bar/pub, discotheque, restaurant, cinema, open air summer cinema, park and garden, nature reserve, exhibition centre, art gallery, historical site, museum, theatre, summer theatre, festivals, casino, sauna, health farm, fitness centre

Surroundings

- **Locality :**

Sea/ocean 200m
Sandy beach 500m
Shingle beach 500m
Rocky beach 500m
Public tennis court 300m
Marina 200m

- **Amenities :**

Town centre 2,5km
Bus stop / bus station 100m
Car rental 200m
Boat rental 200m
Breadshop <50m
Local shops <50m
Supermarket 200m
Hairdressing salon 200m
Post office 200m
Bank 200m
Cash point 200m
Chemist 300m
Doctor 200m
Hospital 500m



View



living room



historical site

Exterior

- **Outside accommodation :**
Covered terrace 12m²
- **Outside setting :**
Private courtyard 12m²
- **Outside amenities :**
BBQ, garden table(s), 4 garden seat(s)



Culture

Interior

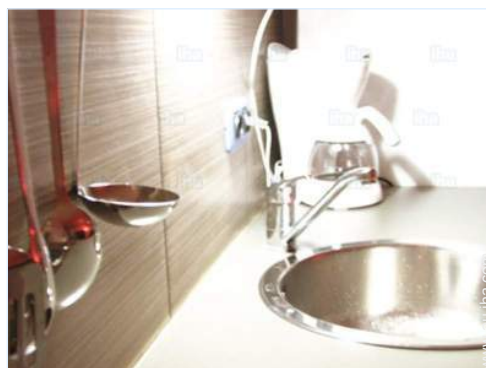
- **Receive up to :**
from 2 to 4 person(s) (2 adults, 2 children)
- **Liveable floor area :**
40m²
- **Interior layout :**
2 Room(s), 1 bedroom(s), sleeping area, 1 shower room, living room 22m², sitting room 11m², Kitchen Area, dining area, tv room, loggia
- **Sleeps - bed(s) :**
1 super king-size bed(s), 2 sofa bed(s) 1 pers, 1 baby cot(s)
- **Guest facilities :**
T.V., cable/satelite, wifi, cupboard, Hanging wardrobe, safe deposit box, hair dryer, mosquito nets, fly screens, partly air conditioned, ceiling paddle fan, electric heating, Blinds
- **Appliances :**
Kitchen utensils, electric coffee maker, electric kettle, toaster, electric cooker, micro-wave oven, refridgerator, freezer, dish washer, washing machine, vacuum cleaner, iron, ironing board

Services

- **House :**
Cleaning on departure, Parking supplement, Airport transfers supplement (+\$A47*)
- **Restauration :**
Breakfast supplement (+\$A16*)

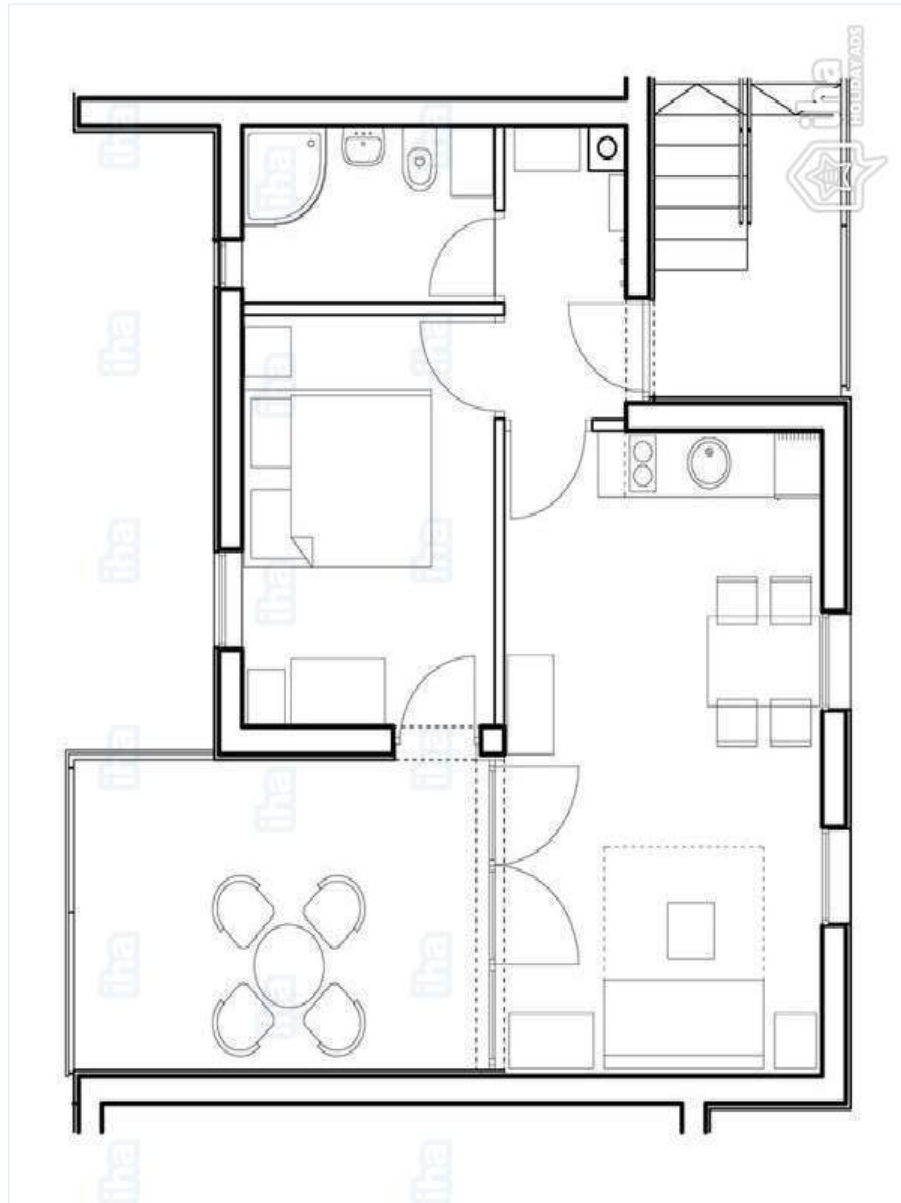
For your guidance

- **For your guidance**
Children welcome
Water : hot/cold
Local voltage supply : 220-240V / 50Hz
Electricity supply : mains



Kitchen Area

Floor plan



www.au.ih.com

Photo album - 1



block of flats



living room



View



historical site



Kitchen Area

Photo album - 2



Culture



shower room



master bedroom



bedroom

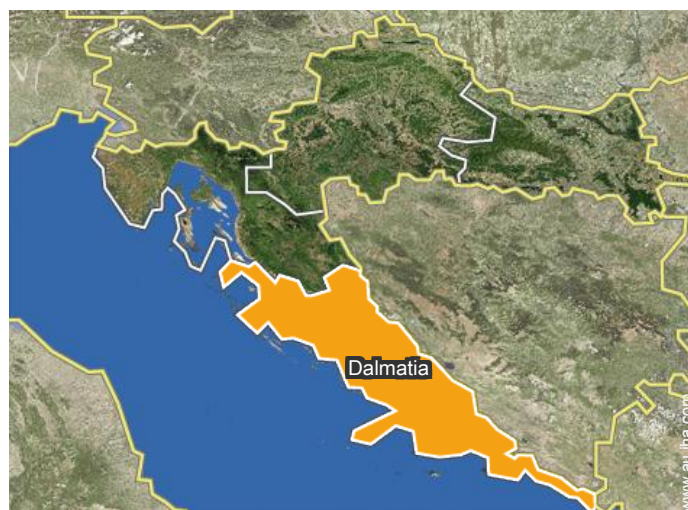


living room




shower room

Location



Location & Access

" My arrea is Peninsula Lapad, the most beautiful part for living. All main things you will find here. The See is at 100 m distance, top beach in only 7 minutes walking. Tennis court is on 5 minutes walking. "

 GPS coordinates in degrees, minutes, seconds: Latitude 42°39'25"N - Longitude 18° 4'42"E ([Dwelling](#))

Address

→ Kneza Domagoja 1D
20000 Dubrovnik

• [Airport Dubrovnik](#)

→ Dubrovnik, Dubrovnik-Neretva County,
Dalmatia, Croatia

→ Distance : 21km

→ Time : 30'

• Dubrovnik : (2,5km)

Contact

Spoken
languages



Holiday lettings Dubrovnik-Neretva County - Dalmatia "Lele and aDora"

Availability calendar - from : april 2019

Apr	M	Tu	W	Th	F	Sa	Su	M	Tu	W	Th	F	Sa	Su	M	Tu	W	Th	F	Sa	Su	M	Tu							
2019	1	2	3	4	5	6	7	8	9	10	11	12	13	14	15	16	17	18	19	20	21	22	23	24	25	26	27	28	29	30

May	W	Th	F	Sa	Su	M	Tu	W	Th	F	Sa	Su	M	Tu	W	Th	F	Sa	Su	M	Tu	W	Th	F							
2019	1	2	3	4	5	6	7	8	9	10	11	12	13	14	15	16	17	18	19	20	21	22	23	24	25	26	27	28	29	30	31
	-	-	-	-	-	-	-	-	-	-	-	-	-	-	-	-	-	-	-	-	-	-	-	-	-	-	-	-	-	-	

June	Sa	Su	M	Tu	W	Th	F	Sa	Su	M	Tu	W	Th	F	Sa	Su	M	Tu	W	Th	F	Sa	Su							
2019	1	2	3	4	5	6	7	8	9	10	11	12	13	14	15	16	17	18	19	20	21	22	23	24	25	26	27	28	29	30
	-	-	-	-	-	-	-	-	-	-	-	-	-	-	-	-	-	-	-	-	-	-	-	-	-	-	-	-	-	-

Jul	M	Tu	W	Th	F	Sa	Su	M	Tu	W	Th	F	Sa	Su	M	Tu	W	Th	F	Sa	Su	M	Tu	W							
2019	1	2	3	4	5	6	7	8	9	10	11	12	13	14	15	16	17	18	19	20	21	22	23	24	25	26	27	28	29	30	31
	-	-	-	-	-	-	-	-	-	-	-	-	-	-	-	-	-	-	-	-	-	-	-	-	-	-	-	-	-	-	

Aug	Th	F	Sa	Su	M	Tu	W	Th	F	Sa	Su	M	Tu	W	Th	F	Sa	Su	M	Tu	W	Th	F	Sa							
2019	1	2	3	4	5	6	7	8	9	10	11	12	13	14	15	16	17	18	19	20	21	22	23	24	25	26	27	28	29	30	31
	-	-	-	-	-	-	-	-	-	-	-	-	-	-	-	-	-	-	-	-	-	-	-	-	-	-	-	-	-	-	

Sep	Su	M	Tu	W	Th	F	Sa	Su	M	Tu	W	Th	F	Sa	Su	M	Tu	W	Th	F	Sa	Su	M							
2019	1	2	3	4	5	6	7	8	9	10	11	12	13	14	15	16	17	18	19	20	21	22	23	24	25	26	27	28	29	30
	-	-	-	-	-	-	-	-	-	-	-	-	-	-	-	-	-	-	-	-	-	-	-	-	-	-	-	-	-	-

Oct	Tu	W	Th	F	Sa	Su	M	Tu	W	Th	F	Sa	Su	M	Tu	W	Th	F	Sa	Su	M	Tu	W	Th							
2019	1	2	3	4	5	6	7	8	9	10	11	12	13	14	15	16	17	18	19	20	21	22	23	24	25	26	27	28	29	30	31
	-	-	-	-	-	-	-	-	-	-	-	-	-	-	-	-	-	-	-	-	-	-	-	-	-	-	-	-	-	-	

Nov	F	Sa	Su	M	Tu	W	Th	F	Sa	Su	M	Tu	W	Th	F	Sa	Su	M	Tu	W	Th	F	Sa							
2019	1	2	3	4	5	6	7	8	9	10	11	12	13	14	15	16	17	18	19	20	21	22	23	24	25	26	27	28	29	30
	-	-	-	-	-	-	-	-	-	-	-	-	-	-	-	-	-	-	-	-	-	-	-	-	-	-	-	-	-	-

Dec	Su	M	Tu	W	Th	F	Sa	Su	M	Tu	W	Th	F	Sa	Su	M	Tu	W	Th	F	Sa	Su	M	Tu							
2019	1	2	3	4	5	6	7	8	9	10	11	12	13	14	15	16	17	18	19	20	21	22	23	24	25	26	27	28	29	30	31
	-	-	-	-	-	-	-	-	-	-	-	-	-	-	-	-	-	-	-	-	-	-	-	-	-	-	-	-	-	-	

Jan	W	Th	F	Sa	Su	M	Tu	W	Th	F	Sa	Su	M	Tu	W	Th	F	Sa	Su	M	Tu	W	Th	F							
2020	1	2	3	4	5	6	7	8	9	10	11	12	13	14	15	16	17	18	19	20	21	22	23	24	25	26	27	28	29	30	31
	-	-	-	-	-	-	-	-	-	-	-	-	-	-	-	-	-	-	-	-	-	-	-	-	-	-	-	-	-	-	

 Reserved

Holiday lettings Dubrovnik - Croatia "Lele and aDora"

9

[Book now](#)

Availability calendar - from : january 2020

Feb	Sa	Su	M	Tu	W	Th	F	Sa	Su	M	Tu	W	Th	F	Sa	Su	M	Tu	W	Th	F	Sa	Su	M	Tu	W	Th	F	Sa
2020	1	2	3	4	5	6	7	8	9	10	11	12	13	14	15	16	17	18	19	20	21	22	23	24	25	26	27	28	29
-	-	-	-	-	-	-	-	-	-	-	-	-	-	-	-	-	-	-	-	-	-	-	-	-	-	-	-	-	-

Mar	Su	M	Tu	W	Th	F	Sa	Su	M	Tu	W	Th	F	Sa	Su	M	Tu	W	Th	F	Sa	Su	M	Tu	W	Th	F	Sa	Su	M	Tu
2020	1	2	3	4	5	6	7	8	9	10	11	12	13	14	15	16	17	18	19	20	21	22	23	24	25	26	27	28	29	30	31
-	-	-	-	-	-	-	-	-	-	-	-	-	-	-	-	-	-	-	-	-	-	-	-	-	-	-	-	-	-	-	-

Reserved

[Month : Next >>](#)

Rental rates - Flat-Apartments - from 2 to 4 Person(s)

Rates	Night	Weekend	week	2 weeks	Month
<input type="checkbox"/> Mid season	\$A126* > 2	\$A126*	\$A882*	\$A1764*	\$A3150*
<input type="checkbox"/> High season	\$A220* > 3	\$A220*	\$A1543*	\$A3087*	\$A6299*

> Minimum Night

[Book now](#)

Booking conditions

• Reservation

→ Payment made upon reservation :
20% of rental sum
→ Payment balance :
10 days before the stay

• rentals

→ Service charges included
→ Day tax included
→ Cleaning charge on departure included
→ Anticipated supplement for :
- baby
- supplementary bed(s)

Accepted methods of payment

• Cash

[▶ Book now](#)

[▶ Contact the owner](#)

Contact directly the property owners

www.au.ihaholidayads.com

Advert No.

66781

[>> Book now <<](#)

Contact

Spoken languages



* Converted at the rate indicated : €100 = \$116.85 = £89 = \$A157.48

Advert No. 66781

www.au.ihaholidayads.com



[>> HOLIDAY LETTINGS](#)

[BOOK DIRECT WITH THE OWNERS](#)