

# Holiday lettings Eilat "Aquarelle"



Villa, semi-detached, single storey, separate entrance, in a(an) Luxury Property

Setting : luxuriant, tranquil

Capacity : from 1 to 8 person(s)

Bedroom(s) : 4

Room(s) : 6

Eilat

Israel

Reservation : +33 (0) 6 61 41 67 68 (France)

Advert No. 9085

www.au.ihacom



>> HOLIDAY LETTINGS

BOOK DIRECT WITH THE OWNERS

## Holiday lettings



Villa, semi-detached, single storey, separate entrance, in a(an) Luxury Property

- **Ideal for large families, family groups**
- **View :** panoramic, unobscured, sea/ocean, swimming pool, fantastic sunset
- **Setting :** luxuriant, tranquil

## Assets

- **Swimming pool :**  
Private swimming-pool, rectangular (length 6m, width 3m), heated, steps in, child secure
- **Parking :**  
Parking uncovered : 3 reserved bay.
- **Advantages :**  
Jacuzzi



façade

## Surroundings & location



Seaside



Fishing



Culture

### Leisure

- **Leisure activities less than 20 km / 12 miles :**

Bathing, pedalo, snorkelling, scuba diving, scuba diving (Standard diving dress), banana boat, water skiing, jet ski, windsurfing, canoeing, hiking, parascending, boat trips, ten-pin bowling, baseball, basketball, volleyball, paintball, fishing

- **Supervised :**

Sailing school, dive school, tennis school

- **Attractions and relaxation :**

Bar/pub, discotheque, restaurant, cinema, park and garden, leisure park, theatre, local craftshop, racecourse, sauna, steam baths, health farm, beauticians, fitness centre

### Surroundings

- **Locality :**

Sandy beach 300m  
Windsurfing spots  
Watersports centre 800m  
Jetski slipway

- **Amenities :**

Town centre 1km  
Bus stop / bus station 2km  
Car rental 2km  
Boat rental  
Scuba diving material hire  
Household linens for hire/laundry services  
Breadshop  
Caterer  
Local shops  
Supermarket  
High class retailers  
Hairdressing salon  
Internet cafe  
Post office  
Bank  
Cash point  
Chemist  
Doctor  
Hospital



terrace



private swimming-pool



terrace

## Interior

- **Receive up to :**

from 1 to 8 person(s) (8 adults)

- **Liveable floor area :**

120m<sup>2</sup>

- **Interior layout :**

6 Room(s), 4 bedroom(s), 2 bathroom, 3 WC, living room 30m<sup>2</sup>, separate kitchen, dining area, dressing room

- **Sleeps - bed(s) :**

4 king-size bed(s)

- **Guest facilities :**

T.V., home cinema, DVD player, t.v points, cable/satelite, high speed internet access, wifi, fully air conditioned, Curtains, Blinds, electric shutters, entry phone system, burgular alarm, remote controlled gates

- **Appliances :**

Crockery/cuttlery, kitchen utensils, cafetiere, electric coffee maker, electric kettle, toaster, gas cooker, electric cooker, oven, micro-wave oven, extractor hood, refridgerator, freezer, ice maker, dish washer, washing machine, vacuum cleaner, iron, ironing board

## Exterior

- **Ground surface :**

150m<sup>2</sup>

- **Outside accommodation :**

Terrace 12m<sup>2</sup>, roof terrace 70m<sup>2</sup>, balcony 5m<sup>2</sup>

- **Outside setting :**

Garden 150m<sup>2</sup>

- **Outside amenities :**

Garden table(s), garden seat(s), garden seated area, 6 sun recliner(s), outside shower facilities



living room

## Services

- **Washing :**

Sheets (1 X / per week), Towels (1 X / per week), Linen (1 X / per week), Beach towels (1 X / per week), Blanket(s) (1 X / per week), Quilt(s) (1 X / per week), Pillows (1 X / per week)

- **House :**

Cleaning on departure supplement, Garden/swimming pool maintenance (1 X / per week), Parking

## For your guidance

- **For your guidance**

Children welcome

No pet allowed

Non smoking rental

Local voltage supply : 220V / 60Hz

Electricity supply : mains



Heated swimming pool



Photo album - 1



façade



private swimming-pool



terrace



terrace



Heated swimming pool

Photo album - 2



living room



living room



living room



living room



Interior facilities



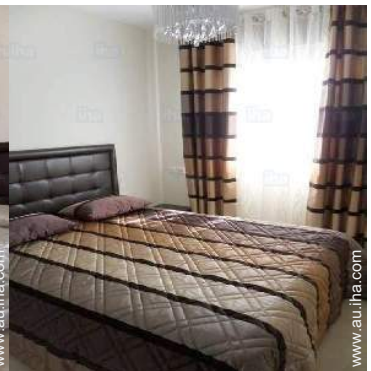
kitchen



bedroom



bedroom



bedroom



bedroom



Photo album - 3



bathroom



balcony



roof terrace



view from the house



view from the roof terrace



view from the garden/park



view from the garden/park



view from the garden/park



overall view



garden

### Location



### Location & Access



GPS coordinates in degrees, minutes, seconds: Latitude 29° 32'48"N - Longitude 34°56'50"E (Dwelling)

#### Address

→ 59/1 Rue Lotus  
88000 Eilat

#### • Airport Eilat J. Hozman

→ Eilat, Israel  
→ Distance : 2km  
→ Time : 10'

#### • Coach station Eilat

→ Eilat, Israel  
→ Distance : 2,5km  
→ Time : 5'

#### • Motorway (junction) Eilat

→ Eilat, Israel  
→ Time : 5'

### Contact

Spoken languages



# Holiday lettings Eilat - Israel "Aquarelle"

[Book now](#)

## Availability calendar - from : november 2019

Nov	F	Sa	Su	M	Tu	W	Th	F	Sa	Su	M	Tu	W	Th	F	Sa	Su	M	Tu	W	Th	F	Sa							
2019	1	2	3	4	5	6	7	8	9	10	11	12	13	14	15	16	17	18	19	20	21	22	23	24	25	26	27	28	29	30
															-	-	-	-	-	-	-	-	-	-	-	-	-	-	-	-

Dec	Su	M	Tu	W	Th	F	Sa	Su	M	Tu	W	Th	F	Sa	Su	M	Tu	W	Th	F	Sa	Su	M	Tu							
2019	1	2	3	4	5	6	7	8	9	10	11	12	13	14	15	16	17	18	19	20	21	22	23	24	25	26	27	28	29	30	31
	-	-	-	-	-	-	-	-	-	-	-	-	-	-	-	-	-	-	-	-	-	-	-	-	-	-	-	-	-	-	

Jan	W	Th	F	Sa	Su	M	Tu	W	Th	F	Sa	Su	M	Tu	W	Th	F	Sa	Su	M	Tu	W	Th	F							
2020	1	2	3	4	5	6	7	8	9	10	11	12	13	14	15	16	17	18	19	20	21	22	23	24	25	26	27	28	29	30	31
	-	-	-	-	-	-	-	-	-	-	-	-	-	-	-	-	-	-	-	-	-	-	-	-	-	-	-	-	-	-	

Feb	Sa	Su	M	Tu	W	Th	F	Sa	Su	M	Tu	W	Th	F	Sa	Su	M	Tu	W	Th	F	Sa							
2020	1	2	3	4	5	6	7	8	9	10	11	12	13	14	15	16	17	18	19	20	21	22	23	24	25	26	27	28	29
	-	-	-	-	-	-	-	-	-	-	-	-	-	-	-	-	-	-	-	-	-	-	-	-	-	-	-	-	-

Mar	Su	M	Tu	W	Th	F	Sa	Su	M	Tu	W	Th	F	Sa	Su	M	Tu	W	Th	F	Sa	Su	M	Tu							
2020	1	2	3	4	5	6	7	8	9	10	11	12	13	14	15	16	17	18	19	20	21	22	23	24	25	26	27	28	29	30	31
	-	-	-	-	-	-	-	-	-	-	-	-	-	-	-	-	-	-	-	-	-	-	-	-	-	-	-	-	-	-	

Apr	W	Th	F	Sa	Su	M	Tu	W	Th	F	Sa	Su	M	Tu	W	Th	F	Sa	Su	M	Tu	W	Th							
2020	1	2	3	4	5	6	7	8	9	10	11	12	13	14	15	16	17	18	19	20	21	22	23	24	25	26	27	28	29	30
	-	-	-	-	-	-	-	-	-	-	-	-	-	-	-	-	-	-	-	-	-	-	-	-	-	-	-	-	-	-

May	F	Sa	Su	M	Tu	W	Th	F	Sa	Su	M	Tu	W	Th	F	Sa	Su	M	Tu	W	Th	F	Sa	Su							
2020	1	2	3	4	5	6	7	8	9	10	11	12	13	14	15	16	17	18	19	20	21	22	23	24	25	26	27	28	29	30	31
	-	-	-	-	-	-	-	-	-	-	-	-	-	-	-	-	-	-	-	-	-	-	-	-	-	-	-	-	-	-	

June	M	Tu	W	Th	F	Sa	Su	M	Tu	W	Th	F	Sa	Su	M	Tu	W	Th	F	Sa	Su	M	Tu							
2020	1	2	3	4	5	6	7	8	9	10	11	12	13	14	15	16	17	18	19	20	21	22	23	24	25	26	27	28	29	30
	-	-	-	-	-	-	-	-	-	-	-	-	-	-	-	-	-	-	-	-	-	-	-	-	-	-	-	-	-	-

Jul	W	Th	F	Sa	Su	M	Tu	W	Th	F	Sa	Su	M	Tu	W	Th	F	Sa	Su	M	Tu	W	Th	F							
2020	1	2	3	4	5	6	7	8	9	10	11	12	13	14	15	16	17	18	19	20	21	22	23	24	25	26	27	28	29	30	31
	-	-	-	-	-	-	-	-	-	-	-	-	-	-	-	-	-	-	-	-	-	-	-	-	-	-	-	-	-	-	

Aug	Sa	Su	M	Tu	W	Th	F	Sa	Su	M	Tu	W	Th	F	Sa	Su	M	Tu	W	Th	F	Sa	Su	M							
2020	1	2	3	4	5	6	7	8	9	10	11	12	13	14	15	16	17	18	19	20	21	22	23	24	25	26	27	28	29	30	31
	-	-	-	-	-	-	-	-	-	-	-	-	-	-	-	-	-	-	-	-	-	-	-	-	-	-	-	-	-	-	

 Reserved





# Holiday lettings Eilat - Israel "Aquarelle"

9

[Book now](#)

## Availability calendar - from : august 2020




Sep	Tu	W	Th	F	Sa	Su	M	Tu	W	Th	F	Sa	Su	M	Tu	W	Th	F	Sa	Su	M	Tu	W							
2020	1	2	3	4	5	6	7	8	9	10	11	12	13	14	15	16	17	18	19	20	21	22	23	24	25	26	27	28	29	30
-	-	-	-	-	-	-	-	-	-	-	-	-	-	-	-	-	-	-	-	-	-	-	-	-	-	-	-	-	-	

Oct	Th	F	Sa	Su	M	Tu	W	Th	F	Sa	Su	M	Tu	W	Th	F	Sa	Su	M	Tu	W	Th	F	Sa							
2020	1	2	3	4	5	6	7	8	9	10	11	12	13	14	15	16	17	18	19	20	21	22	23	24	25	26	27	28	29	30	31
-	-	-	-	-	-	-	-	-	-	-	-	-	-	-	-	-	-	-	-	-	-	-	-	-	-	-	-	-	-	-	

 Reserved

[Month : Next >>](#)

## Rental rates - Villa - from 1 to 8 Person(s)

Rates	Night	Weekend	week	2 weeks	Month
 Low season	\$A315* ↓ > 4	-	\$A2047*	-	-
 Mid season	\$A472* ↓ > 4	-	\$A3150*	-	-
 High season	\$A551* ↓ > 4	-	\$A3937*	-	-

↓ Reducing rates > Minimum Night

[Book now](#)

### Booking conditions

#### • Reservation

- Payment made upon reservation : 30% of rental sum
- Payment balance : on handing over the keys
- Deposit required : \$A1260\*

#### • rentals

- Service charges included
- Day tax included
- Cleaning charge levy on departure : \$A189\*

[▶ Book now](#)

[▶ Contact the owner](#)

### Accepted methods of payment

- Bank transfer (wire) • Cash

Contact directly the property owners

[www.au.iha.com](http://www.au.iha.com)

Advert No.

9085

[>> Book now <<](#)

### Contact

Spoken languages



\* Converted at the rate indicated : €100 = \$110 = £91 = \$A157.48

Advert No. 9085

[www.au.iha.com](http://www.au.iha.com)



[>> HOLIDAY LETTINGS](#)

[BOOK DIRECT WITH THE OWNERS](#)