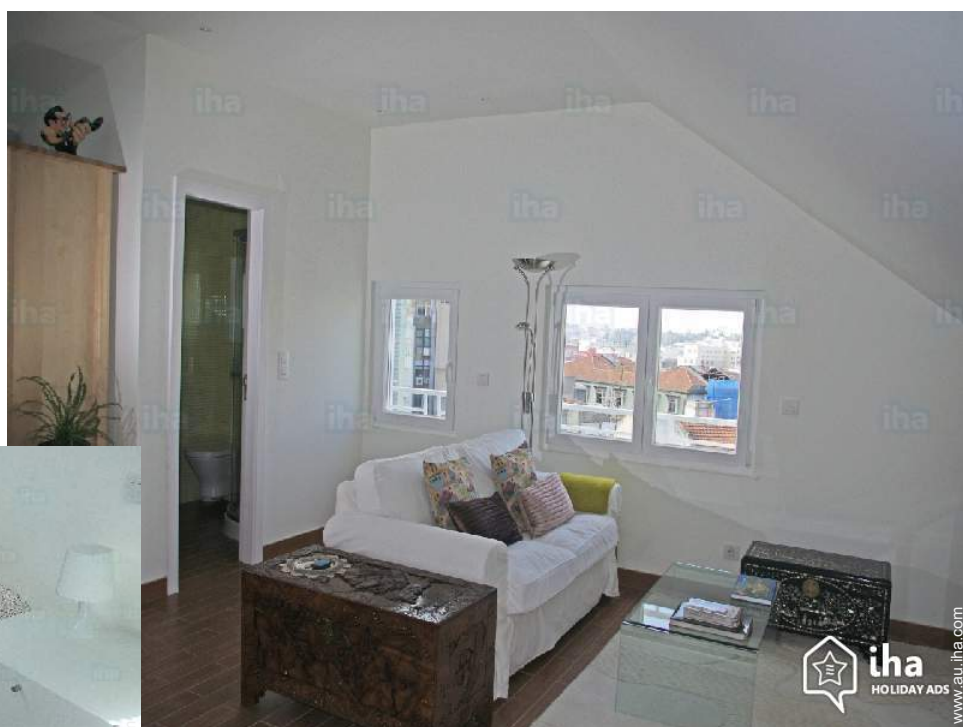


Holiday lettings Lisbon Flat-Apartments

Quiet and bright apartment in the centre of Lisbon, on the 6th floor of a building with elevator, near the inescapable Avenida da Liberdade, the large boulevard leading to the Baixa and the old quarters.



Flat-Apartments top floor in a(an)
Apartment block 6 floors

Setting : urban, tranquil

Capacity : from 1 to 2 person(s)

Bedroom(s) : 1

Room(s) : 2

Lisbon - District of Lisbon - Lisbon and Tagus Valley

Portugal

Advert No. 67417

www.au.ih.com



>> HOLIDAY LETTINGS

BOOK DIRECT WITH THE OWNERS

Holiday lettings



Flat-Apartments top floor in a(an)
Apartment block 6 floors

- **Ideal for couples**
- **View** : unobscured
- **Setting** : urban, tranquil
- **Exposure** : South

" Located in the centre of Lisbon, near the marks of Pombal square and Eduardo VII Park, our apartment is a two rooms, a bedroom with double bed and a living room with dining area. There is also a bathroom with shower and a fully equipped kitchenette. It is a calm and luminous space with open views, on the South side. All the windows have double glazing, electric external shutters and mosquito nets, which makes it very easy to live. Access from the airport is easy and quick, 25 minutes by bus, subway or aerobus (shuttle), with stop/station 100 meters from the apartment. The area is served by two metro lines and several bus routes, including to directly reach Belém, the Praça do Comércio and the market the chips, as well as railway connections to Sintra and Cascais. Nearby you will find the Museum of the Fundação Calouste Gulbenkian and the Parque Eduardo VII pleasant with its alleys, its gardens, terraces and its belvedere. Access to the Baixa can be done on foot down the inevitable Avenida da Liberdade, the large boulevard that leads to the lower town. The final cleaning is included in the rent. There is no deposit to pay. Prices shown are inclusive of all taxes, there will be nothing to pay. "

Surroundings & location



City

" Nearby you will find all services and shops, the area is served by two metro lines and several bus routes, including to directly reach Belém, Praça do Comércio and the market chips, as well as the railway to connections Sintra and Cascais. "

Surroundings

- **Amenities** :
- Town centre 500m
- Bus stop / bus station 50m
- Tube station 100m
- Supermarket 100m
- Bank <50m
- Cash point <50m
- Chemist 100m



kitchenette



bedroom



kitchenette



bedroom

Interior

- **Receive up to :**
from 1 to 2 person(s) (2 adults)
- **Liveable floor area :**
40m²
- **Interior layout :**
2 Room(s), 1 bedroom(s), 1 shower room, living room 20m², kitchenette, dining area
- **Sleeps - bed(s) :**
1 double bed(s)
- **Guest facilities :**
Lift, T.V., book collection, internet access, wifi, cupboard, hair dryer, fly screens, electric heating, Skylights, Double glazed, Rolling shutters, electric shutters, entry phone system
- **Appliances :**
Crockery/cutlery, kitchen utensils, electric espresso coffee maker, electric kettle, toaster, electric hobs, micro-wave oven, extractor hood, reffridgator, vacuum cleaner, iron, ironing board

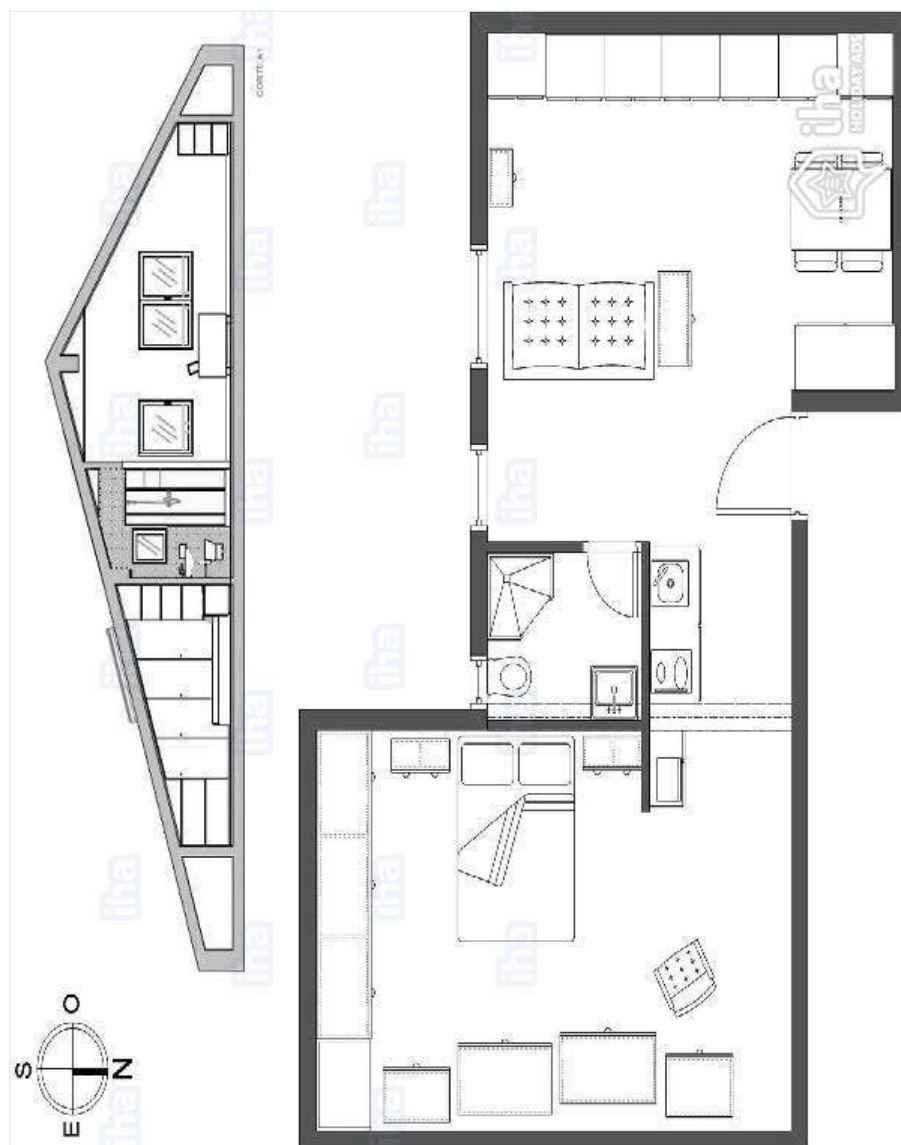
Services

- **Washing :**
Sheets, Towels, Linen, Blanket(s), Quilt(s), Pillows
- **House :**
Cleaning on departure

For your guidance

- **For your guidance**
Non smoking rental, mobile telephone network coverage
Electricity supply : mains

Floor plan



www.au.ih.com

Photo album - 1



bedroom



kitchenette



kitchenette

Photo album - 2



bedroom



living room



dining area

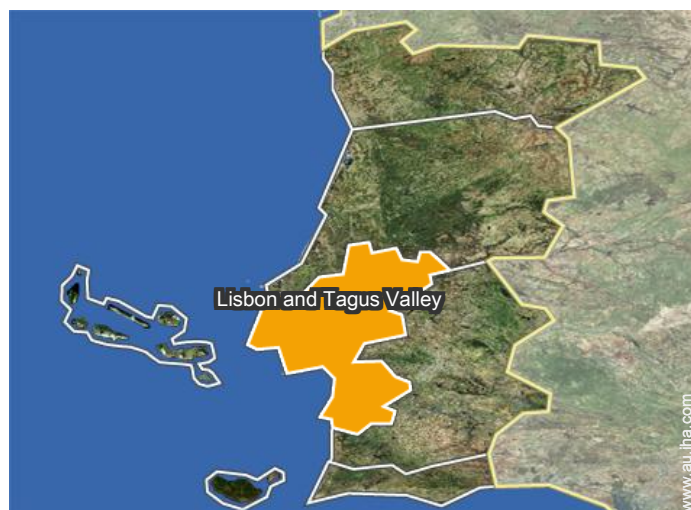
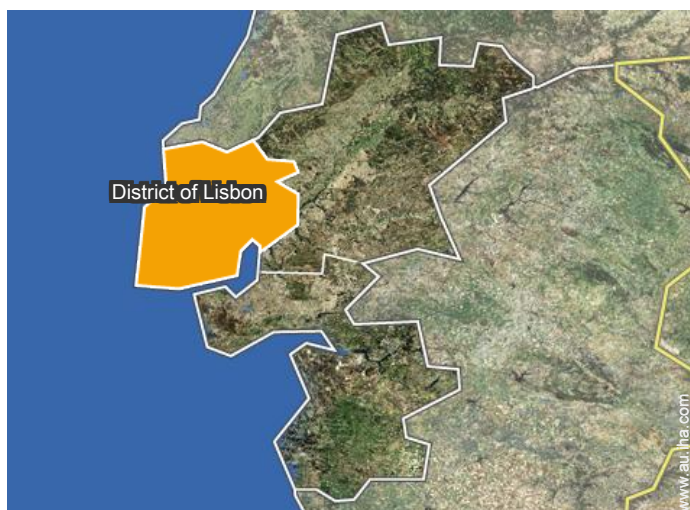


bedroom




shower room

Location



Location & Access

" From Lisbon Airport: bus 744 and 783 and aerobus (shuttle), live up to the apartment. Metro: red line, yellow line correspondence. From the apartment: Metro: blue line, yellow line, Marks of Pombal, Picoas stations. and Parque bus: 736, direct to Rossio and Praça do Comércio 727, live up to Belém and Museu Nacional de Arte Antiga 712, direct to the flea market and Santa Apolónia train station "

 GPS coordinates in degrees, minutes, seconds: Latitude 38°43'42"N - Longitude 9° 8'47"W ([Dwelling](#))

Address

→ Rua Sousa Martins 4
1050-218 Lisbon

• [Airport Lisbon Portela](#)

→ Lisbon, District of Lisbon, Lisbon and Tagus Valley, Portugal
→ Distance : 5km
→ Time : 30'

Contact

Spoken languages



Holiday lettings District of Lisbon - Lisbon and Tagus Valley Flat-Apartments

Availability calendar - from : october 2019

Oct	Tu	W	Th	F	Sa	Su	M	Tu	W	Th	F	Sa	Su	M	Tu	W	Th	F	Sa	Su	M	Tu	W	Th	F	Sa	Su	M	Tu	W	Th	
2019	1	2	3	4	5	6	7	8	9	10	11	12	13	14	15	16	17	18	19	20	21	22	23	24	25	26	27	28	29	30	31	

Nov	F	Sa	Su	M	Tu	W	Th	F	Sa	Su	M	Tu	W	Th	F	Sa	Su	M	Tu	W	Th	F	Sa	Su	M	Tu	W	Th	F	Sa
2019	1	2	3	4	5	6	7	8	9	10	11	12	13	14	15	16	17	18	19	20	21	22	23	24	25	26	27	28	29	30
	-	-	-	-	-	-	-	-	-	-	-	-	-	-	-	-	-	-	-	-	-	-	-	-	-	-	-	-	-	-

Dec	Su	M	Tu	W	Th	F	Sa	Su	M	Tu	W	Th	F	Sa	Su	M	Tu	W	Th	F	Sa	Su	M	Tu	W	Th	F	Sa	Su	M	Tu
2019	1	2	3	4	5	6	7	8	9	10	11	12	13	14	15	16	17	18	19	20	21	22	23	24	25	26	27	28	29	30	31
	-	-	-	-	-	-	-	-	-	-	-	-	-	-	-	-	-	-	-	-	-	-	-	-	-	-	-	-	-	-	-

Jan	W	Th	F	Sa	Su	M	Tu	W	Th	F	Sa	Su	M	Tu	W	Th	F	Sa	Su	M	Tu	W	Th	F	Sa	Su	M	Tu	W	Th	F
2020	1	2	3	4	5	6	7	8	9	10	11	12	13	14	15	16	17	18	19	20	21	22	23	24	25	26	27	28	29	30	31
	-	-	-	-	-	-	-	-	-	-	-	-	-	-	-	-	-	-	-	-	-	-	-	-	-	-	-	-	-	-	-

Feb	Sa	Su	M	Tu	W	Th	F	Sa	Su	M	Tu	W	Th	F	Sa	Su	M	Tu	W	Th	F	Sa	Su	M	Tu	W	Th	F	Sa
2020	1	2	3	4	5	6	7	8	9	10	11	12	13	14	15	16	17	18	19	20	21	22	23	24	25	26	27	28	29
	-	-	-	-	-	-	-	-	-	-	-	-	-	-	-	-	-	-	-	-	-	-	-	-	-	-	-	-	-

Mar	Su	M	Tu	W	Th	F	Sa	Su	M	Tu	W	Th	F	Sa	Su	M	Tu	W	Th	F	Sa	Su	M	Tu	W	Th	F	Sa	Su	M	Tu
2020	1	2	3	4	5	6	7	8	9	10	11	12	13	14	15	16	17	18	19	20	21	22	23	24	25	26	27	28	29	30	31
	-	-	-	-	-	-	-	-	-	-	-	-	-	-	-	-	-	-	-	-	-	-	-	-	-	-	-	-	-	-	-

Apr	W	Th	F	Sa	Su	M	Tu	W	Th	F	Sa	Su	M	Tu	W	Th	F	Sa	Su	M	Tu	W	Th	F	Sa	Su	M	Tu	W	Th
2020	1	2	3	4	5	6	7	8	9	10	11	12	13	14	15	16	17	18	19	20	21	22	23	24	25	26	27	28	29	30
	-	-	-	-	-	-	-	-	-	-	-	-	-	-	-	-	-	-	-	-	-	-	-	-	-	-	-	-	-	-

May	F	Sa	Su	M	Tu	W	Th	F	Sa	Su	M	Tu	W	Th	F	Sa	Su	M	Tu	W	Th	F	Sa	Su	M	Tu	W	Th	F	Sa	Su
2020	1	2	3	4	5	6	7	8	9	10	11	12	13	14	15	16	17	18	19	20	21	22	23	24	25	26	27	28	29	30	31
	-	-	-	-	-	-	-	-	-	-	-	-	-	-	-	-	-	-	-	-	-	-	-	-	-	-	-	-	-	-	-

June	M	Tu	W	Th	F	Sa	Su	M	Tu	W	Th	F	Sa	Su	M	Tu	W	Th	F	Sa	Su	M	Tu	W	Th	F	Sa	Su	M	Tu
2020	1	2	3	4	5	6	7	8	9	10	11	12	13	14	15	16	17	18	19	20	21	22	23	24	25	26	27	28	29	30
	-	-	-	-	-	-	-	-	-	-	-	-	-	-	-	-	-	-	-	-	-	-	-	-	-	-	-	-	-	-

Jul	W	Th	F	Sa	Su	M	Tu	W	Th	F	Sa	Su	M	Tu	W	Th	F	Sa	Su	M	Tu	W	Th	F	Sa	Su	M	Tu	W	Th	F
2020	1	2	3	4	5	6	7	8	9	10	11	12	13	14	15	16	17	18	19	20	21	22	23	24	25	26	27	28	29	30	31
	-	-	-	-	-	-	-	-	-	-	-	-	-	-	-	-	-	-	-	-	-	-	-	-	-	-	-	-	-	-	-

Reserved



Holiday lettings Lisbon - Portugal Flat-Apartments

9
[Book now](#)

Availability calendar - from : july 2020

Aug	Sa	Su	M	Tu	W	Th	F	Sa	Su	M	Tu	W	Th	F	Sa	Su	M	Tu	W	Th	F	Sa	Su	M							
2020	1	2	3	4	5	6	7	8	9	10	11	12	13	14	15	16	17	18	19	20	21	22	23	24	25	26	27	28	29	30	31
-	-	-	-	-	-	-	-	-	-	-	-	-	-	-	-	-	-	-	-	-	-	-	-	-	-	-	-	-	-	-	

Sep	Tu	W	Th	F	Sa	Su	M	Tu	W	Th	F	Sa	Su	M	Tu	W	Th	F	Sa	Su	M	Tu	W							
2020	1	2	3	4	5	6	7	8	9	10	11	12	13	14	15	16	17	18	19	20	21	22	23	24	25	26	27	28	29	30
-	-	-	-	-	-	-	-	-	-	-	-	-	-	-	-	-	-	-	-	-	-	-	-	-	-	-	-	-	-	

Reserved

[Month : Next >>](#)

Rental rates - Flat-Apartments - from 1 to 2 Person(s)

Rates	Night	Weekend	week	2 weeks	Month
<input type="checkbox"/> Mid season	\$A87* > 3	-	\$A551*	-	-
> Minimum Night					

[Book now](#)

Booking conditions

- **Reservation**

→ Payment made upon reservation : 25% of rental sum
→ Payment balance : on handing over the keys

- **rentals**

→ Service charges included
→ Cleaning charge on departure included

Accepted methods of payment

• Bank transfer (wire) • PayPal • Cash

[▶ Book now](#)

[▶ Contact the owner](#)

Contact directly the property owners

www.au.ih.com

Advert No.

67417

[>> Book now <<](#)

Contact

Spoken languages



* Converted at the rate indicated : €100 = \$110 = £91 = \$A157.48

Advert No. 67417

www.au.ih.com



[>> HOLIDAY LETTINGS](#)

[BOOK DIRECT WITH THE OWNERS](#)