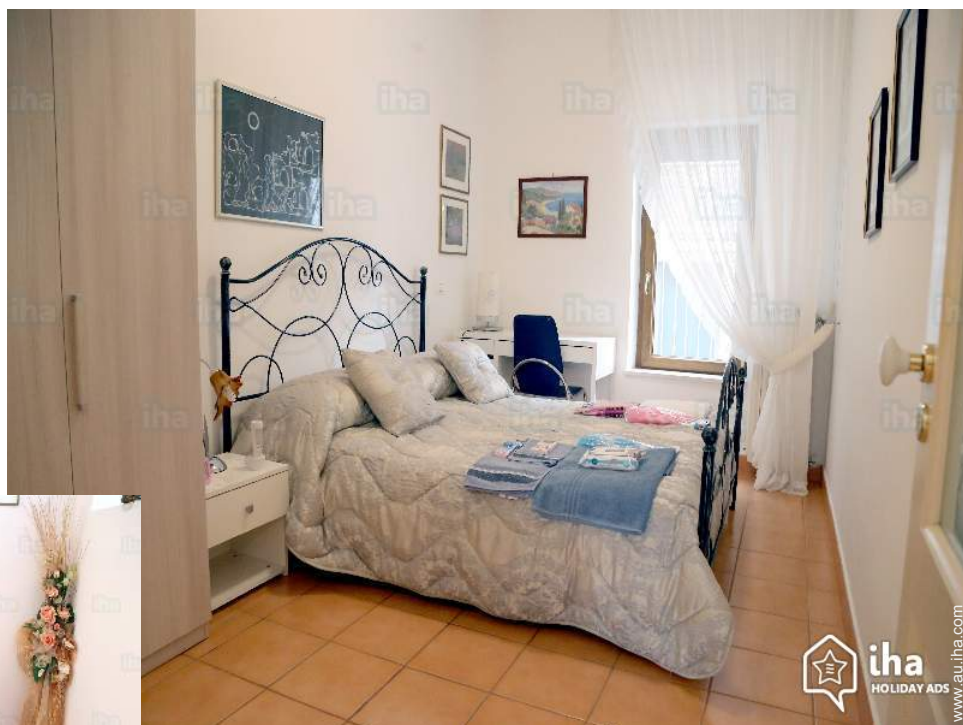


Holiday lettings Matera "LA CASA DEI PARGOLI"

Apartment equipped with all comforts for a pleasant stay in Matera. Ideal for families with children and groups.



Flat-Apartments 2nd floor, separate entrance, in a(an) Palace 3 floors

Setting : city, cultural

Capacity : from 4 to 8 person(s)

Bedroom(s) : 2

Room(s) : 4



Theme breaks

Fairs and traditions

Hikes

An introduction to regional products

Christmas markets

Matera - Province of Matera (MT) - Basilicata

Italy

Advert No. 25281

www.au.iha.com



Holiday lettings



Flat-Apartments 2nd floor, separate entrance, in a(an) Palace 3 floors

- **Ideal for family, group**
- **View :** courtyard, street/avenue
- **Setting :** city, cultural
- **Exposure :** East

" The apartment consists of two bedrooms, a living room with a sofa bed, a fully equipped kitchen and a bathroom with shower. Can sleep comfortably six persons. Linens and toiletries are included as well as shampoo, shower gel, face masks, body creams and many other amenities. The apartment is just a ten minute walk from the Sassi di Matera, in a neighborhood full of listings, such as bars, restaurants, pizzerias, wine bars, bakeries, banks, laundry, shops of crafts. "

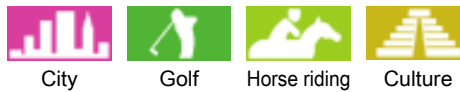
Assets

- **Parking :**
Parking uncovered : 3 reserved bay.
- **baby equipment :**
Baby chair



living room

Surroundings & location



" Guided tours on foot or by bus in the Sassi of Matera. Sightseeing tours on the Archaeological Park of the Murgia Matera. Cycling or trekking in the Park and visit the rock churches. "

Leisure

- **Leisure activities less than 20 km / 12 miles :**

Scuba diving, canoeing, canyoning, rafting, golf, tennis, riding school, pathway, hiking, mountain bike (path), kite flying, boat trips, horse-drawn carriage, horse trekking, donkey rides, mini-golf, rollerblade/rollerskate (circuit), ATV/Quad Bike, basketball, volleyball, hunting, angling, pétanque pitch

- **Supervised :**

Sailing school, dive school, tennis school, riding school

Surroundings

- **Locality :**

Heated swimming pool 500m
Sandy beach 50km
Public swimming pool 500m
Public tennis court 500m
18 hole golf course 15km
Watersports centre 50km
Forest >50km



shower room



bedroom



shower room

Interior

- **Receive up to :**
from 4 to 8 person(s) (5 adults, 3 children)
- **Liveable floor area :**
80m²
- **Interior layout :**
4 Room(s), 2 bedroom(s), 1 shower room, 1 WC, living room 28m², shared kitchen facilities, dining area
- **Sleeps - bed(s) :**
1 double bed(s), 1 sofa bed(s) 2 pers, 3 single bed(s), 1 folding bed(s) 1 pers, 1 baby cot(s)
- **Guest facilities :**
T.V., t.v points, cable/satelite, internet access, wifi, cupboard, radio alarmclock, hair dryer, fly screens, fully air conditioned, mobile cool air fan, central heating, Curtains, electric shutters
- **Appliances :**
Crockery/cuttlery, kitchen utensils, cafetiere, electric coffee maker, electric kettle, toaster, juicer, food processor, meat grill, gas cooker, electric hobs, oven, mini-oven, micro-wave oven, refridgerator, freezer, washing machine, vacuum cleaner, iron, ironing board

Exterior

- **Ground surface :**
< 100m²
- **Outside accommodation :**
Balcony 5m²



Equipment at the guest's disposal

Services

- **Washing :**
Sheets (2 X / per week), Towels (2 X / per week), Linen (2 X / per week), Blanket(s) (1 X / per week), Pillows (1 X / per week)
- **House :**
Cleaning (1 X / per week), Cleaning on departure supplement (+\$A39*), Parking, Airport transfers supplement (+\$A63*)
- **Personnel :**
Laundry (2 X / per week), Guide supplement (+\$A31*)
- **Restauration :**
Breakfast

For your guidance

- **For your guidance**
Children welcome
Pets accepted
Present on site : pets
Mobile telephone network coverage
Water : hot/cold
Local voltage supply : 220-240V / 50Hz
Electricity supply : mains
- **Handicapped people welcome**
Wheelchair access
Fitted out for the disabled : mobility



dining area

Photo album - 1



living room



bedroom

shower room



shower room

Photo album - 2



dining area



Equipment at the guest's disposal



kitchen



child's room



bar/pub



bar/pub

[Theme breaks](#)

Fairs and traditions



Indicated duration : 3 hours
Participant(s) : 1 min - 1 max
From \$A19 for 1 person(s)

Hikes

Indicated duration : 2 hours

An introduction to regional products

Indicated duration : 1 hour
Participant(s) : 2 min - 8 max
Level : Initiation

From \$A39 for 1 person(s)

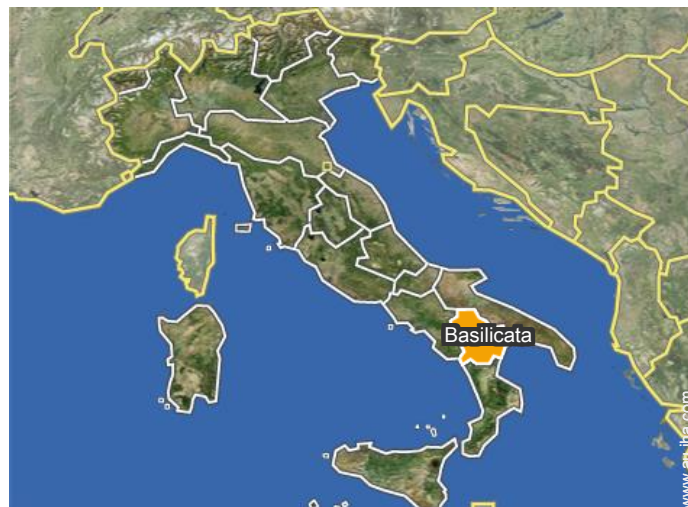
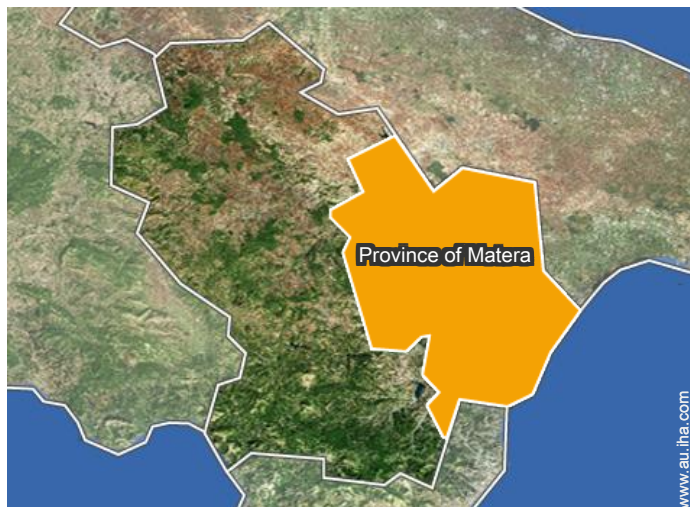
All year long

Christmas markets

Level : Initiation, **Advanced**, **Accompanied**

From \$A236 for 5 person(s)

Location



Location & Access

" Bari airport, shuttle bus three times a day. "



GPS coordinates in degrees, minutes, seconds: Latitude 40°40'28"N - Longitude 16°35'59"E (Dwelling)

Address

→ Via Raffaele Sarra n 10
75100 Matera

• Airport Bari Palese

→ Bari, Province of Bari, Apulia, Italy
→ Distance : 53km
→ Time : 45'

• Motorway (junction) Bologna Taranto

→ Modugno, Province of Bari, Apulia, Italy
→ Distance : 39km
→ Time : 30'

- Montescaglioso : (15km)
- Alberobello : (56km)

Contact

Spoken languages



Holiday lettings Province of Matera - Basilicata "LA CASA DEI PARGOLI"

8
[Book now](#)

Availability calendar - from : december 2018

Dec	Sa	Su	M	Tu	W	Th	F	Sa	Su	M	Tu	W	Th	F	Sa	Su	M	Tu	W	Th	F	Sa	Su	M							
2018	1	2	3	4	5	6	7	8	9	10	11	12	13	14	15	16	17	18	19	20	21	22	23	24	25	26	27	28	29	30	31
										-	-	-	-	-	-	-	-	-	-	-	-	-	-	-	-	-	-	-	-	-	

Jan	Tu	W	Th	F	Sa	Su	M	Tu	W	Th	F	Sa	Su	M	Tu	W	Th	F	Sa	Su	M	Tu	W	Th	F	Sa	Su	M	Tu	W	Th
2019	1	2	3	4	5	6	7	8	9	10	11	12	13	14	15	16	17	18	19	20	21	22	23	24	25	26	27	28	29	30	31
	-	-	-	-	-	-	-	-	-	-	-	-	-	-	-	-	-	-	-	-	-	-	-	-	-	-	-	-	-	-	-

Feb	F	Sa	Su	M	Tu	W	Th	F	Sa	Su	M	Tu	W	Th	F	Sa	Su	M	Tu	W	Th							
2019	1	2	3	4	5	6	7	8	9	10	11	12	13	14	15	16	17	18	19	20	21	22	23	24	25	26	27	28
	-	-	-	-	-	-	-	-	-	-	-	-	-	-	-	-	-	-	-	-	-	-	-	-	-	-	-	

Mar	F	Sa	Su	M	Tu	W	Th	F	Sa	Su	M	Tu	W	Th	F	Sa	Su	M	Tu	W	Th	F	Sa	Su							
2019	1	2	3	4	5	6	7	8	9	10	11	12	13	14	15	16	17	18	19	20	21	22	23	24	25	26	27	28	29	30	31
	-	-	-	-	-	-	-	-	-	-	-	-	-	-	-	-	-	-	-	-	-	-	-	-	-	-	-	-	-	-	

Apr	M	Tu	W	Th	F	Sa	Su	M	Tu	W	Th	F	Sa	Su	M	Tu	W	Th	F	Sa	Su	M	Tu	W	Th	F	Sa	Su	M	Tu
2019	1	2	3	4	5	6	7	8	9	10	11	12	13	14	15	16	17	18	19	20	21	22	23	24	25	26	27	28	29	30
	-	-	-	-	-	-	-	-	-	-	-	-	-	-	-	-	-	-	-	-	-	-	-	-	-	-	-	-	-	-

May	W	Th	F	Sa	Su	M	Tu	W	Th	F	Sa	Su	M	Tu	W	Th	F	Sa	Su	M	Tu	W	Th	F	Sa	Su	M	Tu	W	Th	F
2019	1	2	3	4	5	6	7	8	9	10	11	12	13	14	15	16	17	18	19	20	21	22	23	24	25	26	27	28	29	30	31
	-	-	-	-	-	-	-	-	-	-	-	-	-	-	-	-	-	-	-	-	-	-	-	-	-	-	-	-	-	-	-

June	Sa	Su	M	Tu	W	Th	F	Sa	Su	M	Tu	W	Th	F	Sa	Su	M	Tu	W	Th	F	Sa	Su							
2019	1	2	3	4	5	6	7	8	9	10	11	12	13	14	15	16	17	18	19	20	21	22	23	24	25	26	27	28	29	30
	-	-	-	-	-	-	-	-	-	-	-	-	-	-	-	-	-	-	-	-	-	-	-	-	-	-	-	-	-	-

Jul	M	Tu	W	Th	F	Sa	Su	M	Tu	W	Th	F	Sa	Su	M	Tu	W	Th	F	Sa	Su	M	Tu	W	Th	F	Sa	Su	M	Tu	W
2019	1	2	3	4	5	6	7	8	9	10	11	12	13	14	15	16	17	18	19	20	21	22	23	24	25	26	27	28	29	30	31
	-	-	-	-	-	-	-	-	-	-	-	-	-	-	-	-	-	-	-	-	-	-	-	-	-	-	-	-	-	-	-

Aug	Th	F	Sa	Su	M	Tu	W	Th	F	Sa	Su	M	Tu	W	Th	F	Sa	Su	M	Tu	W	Th	F	Sa	Su						
2019	1	2	3	4	5	6	7	8	9	10	11	12	13	14	15	16	17	18	19	20	21	22	23	24	25	26	27	28	29	30	31
	-	-	-	-	-	-	-	-	-	-	-	-	-	-	-	-	-	-	-	-	-	-	-	-	-	-	-	-	-	-	

Sep	Su	M	Tu	W	Th	F	Sa	Su	M	Tu	W	Th	F	Sa	Su	M	Tu	W	Th	F	Sa	Su	M							
2019	1	2	3	4	5	6	7	8	9	10	11	12	13	14	15	16	17	18	19	20	21	22	23	24	25	26	27	28	29	30
	-	-	-	-	-	-	-	-	-	-	-	-	-	-	-	-	-	-	-	-	-	-	-	-	-	-	-	-	-	-

- Reserved
- Mid season
- Promotional period
- Festive specials
- Low season
- High season



Holiday lettings Matera - Italy "LA CASA DEI PARGOLI"

9

[Book now](#)

Availability calendar - from : september 2019

Oct	Tu	W	Th	F	Sa	Su	M	Tu	W	Th	F	Sa	Su	M	Tu	W	Th	F	Sa	Su	M	Tu	W	Th							
2019	1	2	3	4	5	6	7	8	9	10	11	12	13	14	15	16	17	18	19	20	21	22	23	24	25	26	27	28	29	30	31
-	-	-	-	-	-	-	-	-	-	-	-	-	-	-	-	-	-	-	-	-	-	-	-	-	-	-	-	-	-	-	

Nov	F	Sa	Su	M	Tu	W	Th	F	Sa	Su	M	Tu	W	Th	F	Sa	Su	M	Tu	W	Th	F	Sa							
2019	1	2	3	4	5	6	7	8	9	10	11	12	13	14	15	16	17	18	19	20	21	22	23	24	25	26	27	28	29	30
-	-	-	-	-	-	-	-	-	-	-	-	-	-	-	-	-	-	-	-	-	-	-	-	-	-	-	-	-	-	-

-  Reserved
-  Mid season
-  Promotional period
-  Festive specials
-  Low season
-  High season


[Month : Next >>](#)


Rental rates - Flat-Apartments - from 4 to 8 Person(s)

Rates	Night	Weekend	week	2 weeks	Month
 Low season	\$A252* > 4	\$A268*	\$A1260*	\$A2362*	\$A4567*
 Mid season	\$A283* > 4	\$A299*	\$A1339*	\$A2520*	\$A4724*
 High season	\$A315* > 4	\$A346*	\$A1417*	\$A2677*	\$A4882*
 Festive specials	\$A205* > 4	\$A213*	\$A1024*	\$A2126*	\$A4094*
 Promotional period	\$A236* > 4	\$A244*	\$A1102*	\$A2205*	\$A4252*

> Minimum Night

[Book now](#)

 Weekend ideas : Christmas markets

 Weekend ideas : Hikes



shower room



shower room



dining area



www.au.iha.com



living room



www.au.iha.com

bedroom

Booking conditions

• Reservation

- Payment made upon reservation : 20% of rental sum
- Payment balance : on handing over the keys

• rentals

- Service charges to be added
- Day tax in addition
- Cleaning charge levy on departure : \$A55*
- Anticipated supplement for :
 - supplementary bed(s)

Accepted methods of payment

- Visa/Delta/Electron • International Money Order • Switch/Maestro • Bank transfer (wire) • MasterCard/EuroCard • Cirrus • American Express • Diners Club •

Bankers draft • PayPal • Cash

► [Book now](#)

► [Contact the owner](#)

Contact directly the property owners

www.au.iha.com

Advert No.

25281

>> [Book now](#) <<

Contact

Spoken languages



* Converted at the rate indicated : €100 = \$116.85 = £89 = \$A157.48

Advert No. 25281

www.au.iha.com

