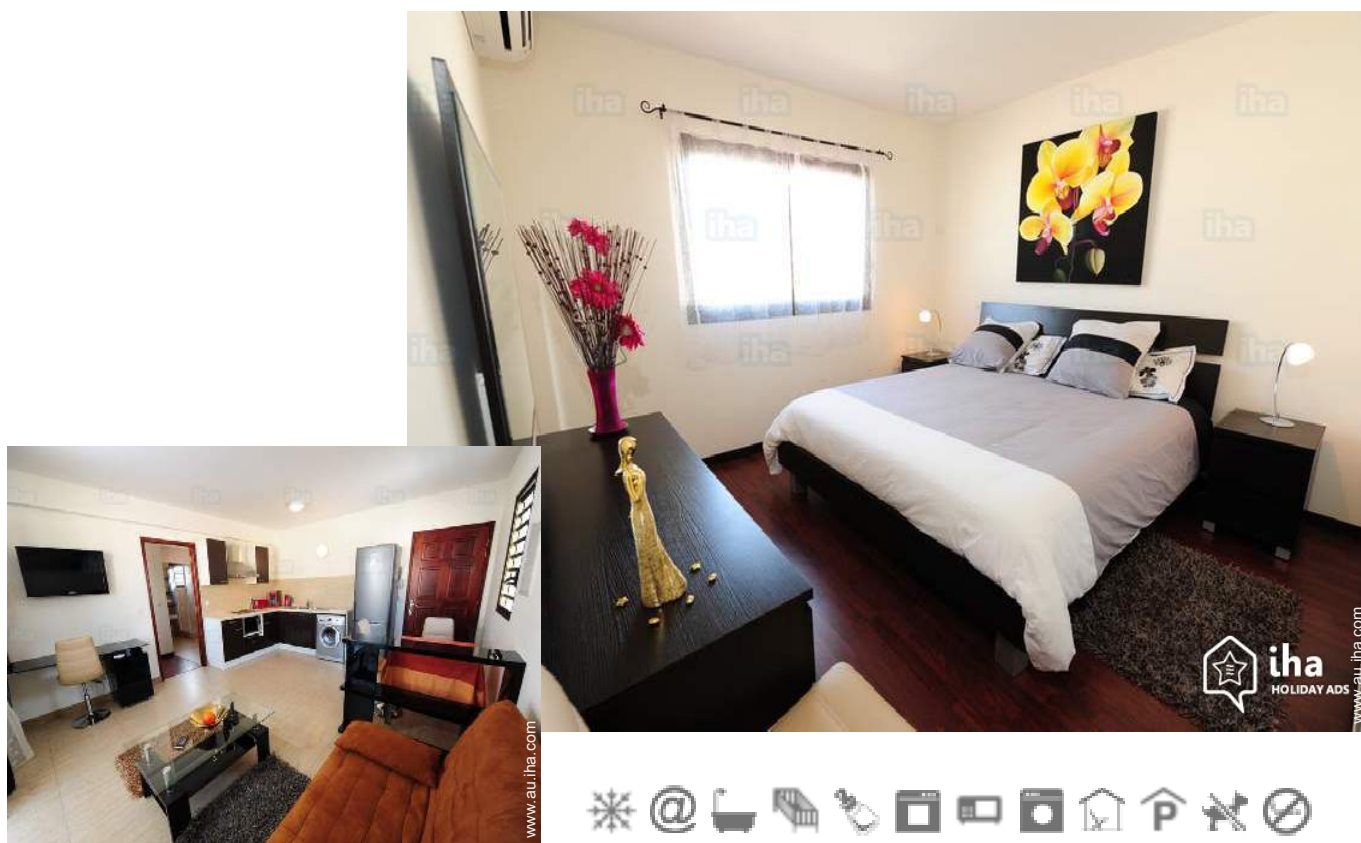


Holiday lettings Nouméa "ENTRE CIEL ET TERRE"

In the heart of Nouméa, the Latin Quarter offers holidaymakers and business travellers the proximity of all kinds of shops. Everything is done on foot. Lines of bus 2 min. for all destinations.



Flat-Apartments 3rd floor, separate entrance, in a(an) Apartment block 6 floors

Setting : pleasant, conducive to shopping

Capacity : from 1 to 4 person(s)

Bedroom(s) : 1

Room(s) : 3



Eurogîtes ()
Gîtes de France (3 ears)

Nouméa - South Province - Grande-Terre (New Caledonia)
New Caledonia

Reservation : +687 (0) 449002 (New Caledonia)

Advert No. 50035

www.au.ih.com



Holiday lettings



Flat-Apartments 3rd floor, separate entrance, in a(an) Apartment block 6 floors

- **Ideal for all age groups, couples**
- **View :** town, street/avenue
- **Setting :** pleasant, condusive to shopping

" The apartment itself has all the necessary equipment. Bath towels, spare sheets, etc. You are in this apartment at home. Possibility to cook. Although very central apartment is quiet, ventilated and bright. It is located in a building above the parking lots. It offers private parking and parking visitors. In the neighbourhood you will find at the bottom of the building a small grocery on the perpendicular Street a bakery and in the parallel Street, one of the best restaurants in the city. You also have a pharmacy, the street of the banks, the market, the municipal police, the post office. Can't find better location. "

Assets

- **Parking :**
Covered parking : 1 communal. Parking uncovered : 1 internal.
- **baby equipment :**
Baby chair, baby potty

Surroundings & location



" 5 min. by bus from the beaches. Departure from Anse-Vata on islets in front by taxi boat. Spend the day on the duck island or l ' îlot Maître. Possibility to also spend a day at the Amedee with meals and Tahitian dances to the program. "

Leisure

- **Leisure activities less than 20 km / 12 miles :**
Bathing, pedalo, snorkelling, jet ski, surfing, windsurfing, sailing, kite surfing, golf, tennis, squash, riding school, pony club, pathway, coastal/forest paths, hiking, rock climbing, kite flying, paragliding, boat trips, horse-drawn carriage, skate board (ramps), go-karting, ten-pin bowling, basketball, volleyball, hunting, acrobanch, fishing, pétanque pitch

- **Supervised :**
Sailing school, dive school, tennis school, riding school

- **Attractions and relaxation :**
Bar/pub, discotheque, restaurant, cinema, open air summer cinema, karaoke, park and garden, leisure park, zoo/animal park, exhibition centre, art gallery, historical site, museum, theatre, summer theatre, festivals, antiques & bric-a-brac, local craftshop, casino, racecourse, thalassotherapy centre, sauna, steam baths, health farm, beauticians, fitness centre

Surroundings

- **Locality :**
Heated swimming pool 1km
Sea/ocean 1km
Sandy beach 1km
Public swimming pool 1km
Public tennis court 300m
9 hole golf course 10km
Windsurfing spots 1km
Watersports centre 1km
Marina 500m
Slipway 800m

- **Amenities :**
Nursery 500m
Village centre <50m
Town centre 200m
Bus stop / bus station 100m
Bus pick up point beach 100m
Bike/mountain bike hire 1km
Scooter/motorbike hire 1km
Car rental 800m
Boat rental 500m
Scuba diving material hire 1km
Household linens for hire/laundry services 100m
Breadshop 50m
Caterer 50m

- Local shops <50m
- Supermarket 800m
- High class retailers <50m
- Hairdressing salon <50m
- Internet cafe 200m
- Post office 100m
- Bank 50m
- Cash point 50m
- Chemist 50m
- Doctor 100m
- Nurse 500m
- Hospital 30km
- Dispensing clinic 1km



living room



living room



bathroom

Interior

- **Receive up to :**
from 1 to 4 person(s) (2 adults, 2 children)
- **Liveable floor area :**
40m²
- **Interior layout :**
3 Room(s), 1 bedroom(s), 1 bathroom, 1 WC, living room 22m², american style kitchen, dining area, tv room, study
- **Sleeps - bed(s) :**
1 double bed(s), 1 sofa bed(s) 2 pers, 1 baby cot(s)
- **Guest facilities :**
Lift, T.V., DVD player, t.v points, telephone, internet access, wifi, wardrobe, cupboard, Hanging wardrobe, hair dryer, partly air conditioned, Glazed in area, Curtains, Blinds, Rolling shutters, electric shutters, entry phone system, remote controlled gates, digipad entry gates
- **Appliances :**
Crockery/cuttlery, kitchen utensils, cafetiere, electric coffee maker, electric kettle, toaster, juicer, food processor, electric cooker, electric hobs, oven, micro-wave oven, extractor hood, refridgerator, freezer, washing machine, vacuum cleaner, iron, ironing board

Exterior

- **Outside accommodation :**
Covered terrace 5m²



view from the flat

Services

- **Washing :**
Sheets, Towels, Linen, Blanket(s), Quilt(s), Pillows
- **House :**
Cleaning on departure supplement (+\$A66*), Parking, Airport transfers supplement (+\$A47*)

For your guidance

- **For your guidance**
Children welcome
No pet allowed
Non smoking rental, mobile telephone network coverage
Water : hot/cold
Electricity supply : individual generator



kitchen

Photo album - 1



living room



living room



bathroom

Photo album - 2



kitchen



view from the flat



Kitchen Area



tv room




furniture

Location



Location & Access

" Aircraft often arriving late at night, it is advisable to passengers arriving to a carrier with which we work and allows us to accompany you to the receptacle. Indeed, due to the fatigue of the journey, it is inadvisable to take the car (still for 50 km to Nouméa) for half an hour drive. The canoe is a dangerous to place. "

 GPS coordinates in degrees, minutes, seconds: Latitude 22°16'32"S - Longitude 166°26'47"E ([Dwelling](#))

Address

→ Time : 5'

→ Rue Charles Verneilh
Quartier Latin
98800 Nouméa

• [Airport La Tontouta](#)

→ Nouméa, South Province, Grande-Terre
(New Caledonia), New Caledonia
→ Distance : 50km
→ Time : 30'

• [Sea port Nouméa Port Moselle](#)

→ Nouméa, South Province, Grande-Terre
(New Caledonia), New Caledonia
→ Distance : 300m

Contact

Spoken languages



Holiday lettings Nouméa - New Caledonia "ENTRE CIEL ET TERRE"

7
[Book now](#)

Availability calendar - from : june 2019

June	Sa	Su	M	Tu	W	Th	F	Sa	Su	M	Tu	W	Th	F	Sa	Su	M	Tu	W	Th	F	Sa	Su							
2019	1	2	3	4	5	6	7	8	9	10	11	12	13	14	15	16	17	18	19	20	21	22	23	24	25	26	27	28	29	30
																		-	-	-	-	-	-	-	-	-	-	-	-	

Jul	M	Tu	W	Th	F	Sa	Su	M	Tu	W	Th	F	Sa	Su	M	Tu	W	Th	F	Sa	Su	M	Tu	W							
2019	1	2	3	4	5	6	7	8	9	10	11	12	13	14	15	16	17	18	19	20	21	22	23	24	25	26	27	28	29	30	31
	-	-	-	-	-	-	-	-	-	-	-	-	-	-	-	-	-	-	-	-	-	-	-	-	-	-	-	-	-	-	

Aug	Th	F	Sa	Su	M	Tu	W	Th	F	Sa	Su	M	Tu	W	Th	F	Sa	Su	M	Tu	W	Th	F	Sa							
2019	1	2	3	4	5	6	7	8	9	10	11	12	13	14	15	16	17	18	19	20	21	22	23	24	25	26	27	28	29	30	31
	-	-	-	-	-	-	-	-	-	-	-	-	-	-	-	-	-	-	-	-	-	-	-	-	-	-	-	-	-	-	

Sep	Su	M	Tu	W	Th	F	Sa	Su	M	Tu	W	Th	F	Sa	Su	M	Tu	W	Th	F	Sa	Su	M							
2019	1	2	3	4	5	6	7	8	9	10	11	12	13	14	15	16	17	18	19	20	21	22	23	24	25	26	27	28	29	30
	-	-	-	-	-	-	-	-	-	-	-	-	-	-	-	-	-	-	-	-	-	-	-	-	-	-	-	-	-	-

Oct	Tu	W	Th	F	Sa	Su	M	Tu	W	Th	F	Sa	Su	M	Tu	W	Th	F	Sa	Su	M	Tu	W	Th							
2019	1	2	3	4	5	6	7	8	9	10	11	12	13	14	15	16	17	18	19	20	21	22	23	24	25	26	27	28	29	30	31
	-	-	-	-	-	-	-	-	-	-	-	-	-	-	-	-	-	-	-	-	-	-	-	-	-	-	-	-	-	-	

Nov	F	Sa	Su	M	Tu	W	Th	F	Sa	Su	M	Tu	W	Th	F	Sa	Su	M	Tu	W	Th	F	Sa							
2019	1	2	3	4	5	6	7	8	9	10	11	12	13	14	15	16	17	18	19	20	21	22	23	24	25	26	27	28	29	30
	-	-	-	-	-	-	-	-	-	-	-	-	-	-	-	-	-	-	-	-	-	-	-	-	-	-	-	-	-	-

Dec	Su	M	Tu	W	Th	F	Sa	Su	M	Tu	W	Th	F	Sa	Su	M	Tu	W	Th	F	Sa	Su	M	Tu							
2019	1	2	3	4	5	6	7	8	9	10	11	12	13	14	15	16	17	18	19	20	21	22	23	24	25	26	27	28	29	30	31
	-	-	-	-	-	-	-	-	-	-	-	-	-	-	-	-	-	-	-	-	-	-	-	-	-	-	-	-	-	-	

Jan	W	Th	F	Sa	Su	M	Tu	W	Th	F	Sa	Su	M	Tu	W	Th	F	Sa	Su	M	Tu	W	Th	F							
2020	1	2	3	4	5	6	7	8	9	10	11	12	13	14	15	16	17	18	19	20	21	22	23	24	25	26	27	28	29	30	31
	-	-	-	-	-	-	-	-	-	-	-	-	-	-	-	-	-	-	-	-	-	-	-	-	-	-	-	-	-	-	

Feb	Sa	Su	M	Tu	W	Th	F	Sa	Su	M	Tu	W	Th	F	Sa	Su	M	Tu	W	Th	F	Sa							
2020	1	2	3	4	5	6	7	8	9	10	11	12	13	14	15	16	17	18	19	20	21	22	23	24	25	26	27	28	29
	-	-	-	-	-	-	-	-	-	-	-	-	-	-	-	-	-	-	-	-	-	-	-	-	-	-	-	-	-

Mar	Su	M	Tu	W	Th	F	Sa	Su	M	Tu	W	Th	F	Sa	Su	M	Tu	W	Th	F	Sa	Su	M	Tu							
2020	1	2	3	4	5	6	7	8	9	10	11	12	13	14	15	16	17	18	19	20	21	22	23	24	25	26	27	28	29	30	31
	-	-	-	-	-	-	-	-	-	-	-	-	-	-	-	-	-	-	-	-	-	-	-	-	-	-	-	-	-	-	



Holiday lettings
 South Province - Grande-Terre (New Caledonia)
"ENTRE CIEL ET TERRE"

8

[Book now](#)





Availability calendar - from : march 2020

Apr	W	Th	F	Sa	Su	M	Tu	W	Th	F	Sa	Su	M	Tu	W	Th	F	Sa	Su	M	Tu	W	Th	F	Sa	Su	M	Tu	W	Th
2020	1	2	3	4	5	6	7	8	9	10	11	12	13	14	15	16	17	18	19	20	21	22	23	24	25	26	27	28	29	30
-	-	-	-	-	-	-	-	-	-	-	-	-	-	-	-	-	-	-	-	-	-	-	-	-	-	-	-	-	-	-

May	F	Sa	Su	M	Tu	W	Th	F	Sa	Su	M	Tu	W	Th	F	Sa	Su	M	Tu	W	Th	F	Sa	Su							
2020	1	2	3	4	5	6	7	8	9	10	11	12	13	14	15	16	17	18	19	20	21	22	23	24	25	26	27	28	29	30	31
-	-	-	-	-	-	-	-	-	-	-	-	-	-	-	-	-	-	-	-	-	-	-	-	-	-	-	-	-	-	-	

[Month : Next >>](#)

Rental rates - Flat-Apartments - from 1 to 4 Person(s)

Rates	Night	Weekend	week	2 weeks	Month
 Low season	-	-	\$A554* (Monday)	-	-
 Mid season	-	-	\$A661* (Monday)	-	-
 High season	-	-	\$A661* (Monday)	-	-
 Promotional period	-	-	\$A554* (Monday)	-	-

(Check-in day)

[Book now](#)

Booking conditions

• **Reservation**

→ Payment made upon reservation :
 30% of rental sum
 → Payment balance :
 on handing over the keys

• **rentals**

→ Service charges included
 → Cleaning charge levy on departure :
 \$A66*

Accepted methods of payment

• Visa/Delta/Electron • Bank transfer
 (wire) • Cash

[▶ Book now](#)

[▶ Contact the owner](#)

Contact directly the property owners

www.au.iha.com

Advert No.

50035

[>> Book now <<](#)

Contact

Spoken languages



* Converted at the rate indicated : €100 = \$116.85 = £89 = \$A157.48

Advert No. 50035

www.au.iha.com

