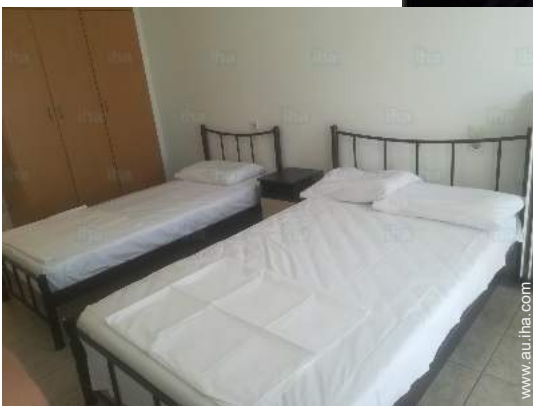


Holiday lettings Olympia Flat-Apartments



Flat-Apartments 1st floor, separate entrance, in a(an) Private estate 1 floor

Setting : ancient, characteristic

Capacity : from 2 to 5 person(s)

Bedroom(s) : 1

Room(s) : 2

Olympia - Elis - Peloponnese

Greece

Advert No. 10340

www.au.iha.com



Holiday lettings



Flat-Apartments 1st floor, separate entrance, in a(an) Private estate 1 floor

- **Ideal for all age groups, couples**
- **View :** mountain, town, square, monument
- **Setting :** ancient, characteristic
- **Exposure :** East

Surroundings & location



Countryside

Leisure

- **Leisure activities less than 20 km / 12 miles :**

Bathing, jet ski, pathway, coastal/forest paths, hiking, horse trekking, fishing

- **Supervised :**

Riding school

- **Attractions and relaxation :**

Bar/pub, restaurant, art gallery, historical site, museum, summer theatre, antiques & bric-a-brac, local craftshop, cellar and wine tasting, natural spring baths, thermal baths, fitness centre, Bio farm

Surroundings

- **Locality :**

Sea/ocean 15km
Sandy beach 15km
Waterfall 15km
River 3km
Forest 500m
Marina 20km



Advert No. 10340

www.au.iha.com





Interior

- **Receive up to :**
from 2 to 5 person(s) (4 adults, 1 children)
- **Liveable floor area :**
50m²
- **Interior layout :**
2 Room(s), 1 bedroom(s), 1 bathroom, living room 25m², Kitchen Area, study, veranda
- **Sleeps - bed(s) :**
1 double bed(s), 1 sofa bed(s) 2 pers, 1 foldaway bed(s) 1 pers
- **Guest facilities :**
T.V., wardrobe, cupboard, hair dryer, fully air conditioned, mobile cool air fan, electric heating, Rolling shutters
- **Appliances :**
Crockery/cutlery, kitchen utensils, cafetiere, electric coffee maker, toaster, electric cooker, mini-oven, refridgerator, iron, ironing board

Exterior

- **Outside accommodation :**
Balcony



Services

- **Washing :**
Sheets (3 X / per week), Towels (3 X / per week), Linen (3 X / per week), Blanket(s), Pillows (3 X / per week)
- **House :**
Cleaning (3 X / per week)

For your guidance

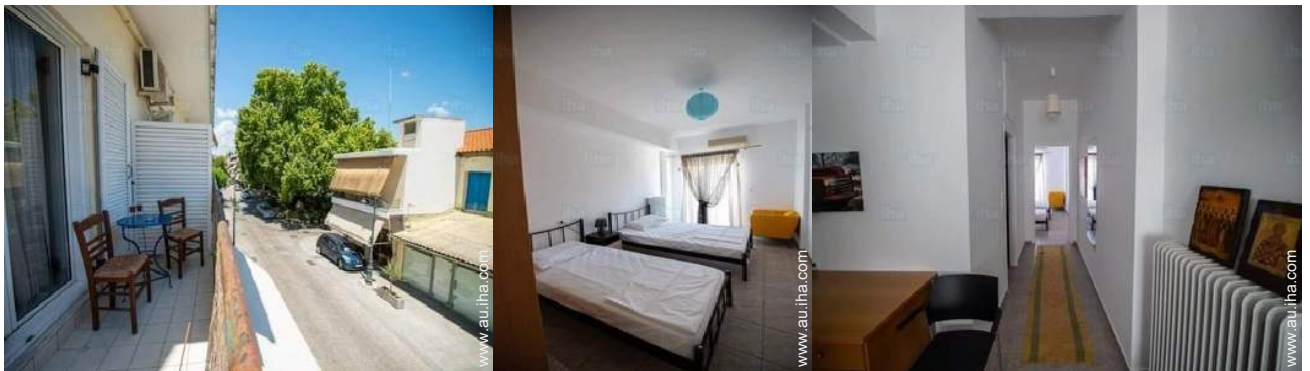
- **For your guidance**
No children under 3 years old
Pets accepted under certain conditions (ask the owner)
Water : hot/cold
Local voltage supply : 220-240V / 50Hz
Electricity supply : mains



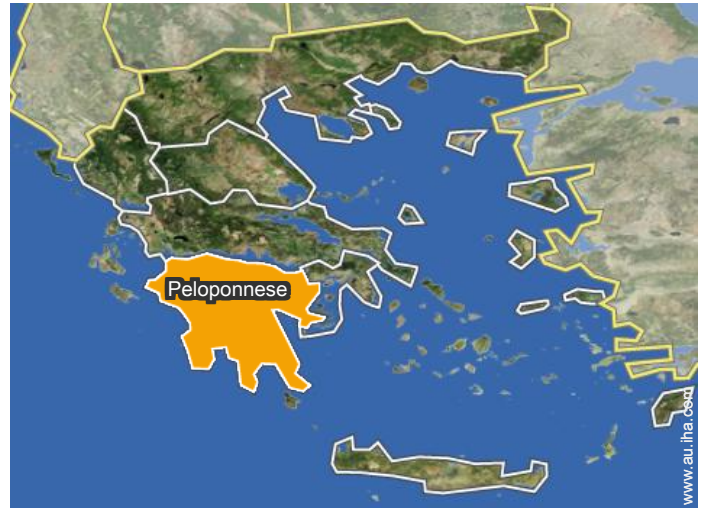
Photo album - 1



Photo album - 2



Location



Location & Access



GPS coordinates in degrees, minutes, seconds: Latitude 37°38'38"N - Longitude 21°37'30"E (Dwelling)

Address

→ Κονδύλη και Στεφανοπούλου 2
270 65 Olympia

- Pyrgos : (20km)
- Kaiafas : (14km)
- Archea Iliida : (50km)

Contact

Spoken languages



Holiday lettings Olympia - Greece Flat-Apartments

7
[Book now](#)

Availability calendar - from : october 2020

Oct	Th	F	Sa	Su	M	Tu	W	Th	F	Sa	Su	M	Tu	W	Th	F	Sa	Su	M	Tu	W	Th	F	Sa	Su	M	Tu	W	Th	F	Sa
2020	1	2	3	4	5	6	7	8	9	10	11	12	13	14	15	16	17	18	19	20	21	22	23	24	25	26	27	28	29	30	31

Nov	Su	M	Tu	W	Th	F	Sa	Su	M	Tu	W	Th	F	Sa	Su	M	Tu	W	Th	F	Sa	Su	M							
2020	1	2	3	4	5	6	7	8	9	10	11	12	13	14	15	16	17	18	19	20	21	22	23	24	25	26	27	28	29	30
	-	-	-	-	-	-	-	-	-	-	-	-	-	-	-	-	-	-	-	-	-	-	-	-	-	-	-	-	-	-

Dec	Tu	W	Th	F	Sa	Su	M	Tu	W	Th	F	Sa	Su	M	Tu	W	Th	F	Sa	Su	M	Tu	W	Th	F	Sa	Su	M	Tu	W	Th
2020	1	2	3	4	5	6	7	8	9	10	11	12	13	14	15	16	17	18	19	20	21	22	23	24	25	26	27	28	29	30	31
	-	-	-	-	-	-	-	-	-	-	-	-	-	-	-	-	-	-	-	-	-	-	-	-	-	-	-	-	-	-	-

Jan	F	Sa	Su	M	Tu	W	Th	F	Sa	Su	M	Tu	W	Th	F	Sa	Su	M	Tu	W	Th	F	Sa	Su							
2021	1	2	3	4	5	6	7	8	9	10	11	12	13	14	15	16	17	18	19	20	21	22	23	24	25	26	27	28	29	30	31
	-	-	-	-	-	-	-	-	-	-	-	-	-	-	-	-	-	-	-	-	-	-	-	-	-	-	-	-	-	-	-

Feb	M	Tu	W	Th	F	Sa	Su	M	Tu	W	Th	F	Sa	Su	M	Tu	W	Th	F	Sa	Su								
2021	1	2	3	4	5	6	7	8	9	10	11	12	13	14	15	16	17	18	19	20	21	22	23	24	25	26	27	28	
	-	-	-	-	-	-	-	-	-	-	-	-	-	-	-	-	-	-	-	-	-	-	-	-	-	-	-	-	-

Mar	M	Tu	W	Th	F	Sa	Su	M	Tu	W	Th	F	Sa	Su	M	Tu	W	Th	F	Sa	Su	M	Tu	W							
2021	1	2	3	4	5	6	7	8	9	10	11	12	13	14	15	16	17	18	19	20	21	22	23	24	25	26	27	28	29	30	31
	-	-	-	-	-	-	-	-	-	-	-	-	-	-	-	-	-	-	-	-	-	-	-	-	-	-	-	-	-	-	

Apr	Th	F	Sa	Su	M	Tu	W	Th	F	Sa	Su	M	Tu	W	Th	F	Sa	Su	M	Tu	W	Th	F							
2021	1	2	3	4	5	6	7	8	9	10	11	12	13	14	15	16	17	18	19	20	21	22	23	24	25	26	27	28	29	30
	-	-	-	-	-	-	-	-	-	-	-	-	-	-	-	-	-	-	-	-	-	-	-	-	-	-	-	-	-	-

May	Sa	Su	M	Tu	W	Th	F	Sa	Su	M	Tu	W	Th	F	Sa	Su	M	Tu	W	Th	F	Sa	Su	M							
2021	1	2	3	4	5	6	7	8	9	10	11	12	13	14	15	16	17	18	19	20	21	22	23	24	25	26	27	28	29	30	31
	-	-	-	-	-	-	-	-	-	-	-	-	-	-	-	-	-	-	-	-	-	-	-	-	-	-	-	-	-	-	

June	Tu	W	Th	F	Sa	Su	M	Tu	W	Th	F	Sa	Su	M	Tu	W	Th	F	Sa	Su	M	Tu	W							
2021	1	2	3	4	5	6	7	8	9	10	11	12	13	14	15	16	17	18	19	20	21	22	23	24	25	26	27	28	29	30
	-	-	-	-	-	-	-	-	-	-	-	-	-	-	-	-	-	-	-	-	-	-	-	-	-	-	-	-	-	-

Jul	Th	F	Sa	Su	M	Tu	W	Th	F	Sa	Su	M	Tu	W	Th	F	Sa	Su	M	Tu	W	Th	F	Sa							
2021	1	2	3	4	5	6	7	8	9	10	11	12	13	14	15	16	17	18	19	20	21	22	23	24	25	26	27	28	29	30	31
	-	-	-	-	-	-	-	-	-	-	-	-	-	-	-	-	-	-	-	-	-	-	-	-	-	-	-	-	-	-	

 Low season  Mid season

Holiday lettings Elis - Peloponnese Flat-Apartments

8
[Book now](#)

Availability calendar - from : july 2021

Aug	Su	M	Tu	W	Th	F	Sa	Su	M	Tu	W	Th	F	Sa	Su	M	Tu	W	Th	F	Sa	Su	M	Tu							
2021	1	2	3	4	5	6	7	8	9	10	11	12	13	14	15	16	17	18	19	20	21	22	23	24	25	26	27	28	29	30	31
-	-	-	-	-	-	-	-	-	-	-	-	-	-	-	-	-	-	-	-	-	-	-	-	-	-	-	-	-	-	-	

Sep	W	Th	F	Sa	Su	M	Tu	W	Th	F	Sa	Su	M	Tu	W	Th	F	Sa	Su	M	Tu	W	Th							
2021	1	2	3	4	5	6	7	8	9	10	11	12	13	14	15	16	17	18	19	20	21	22	23	24	25	26	27	28	29	30
-	-	-	-	-	-	-	-	-	-	-	-	-	-	-	-	-	-	-	-	-	-	-	-	-	-	-	-	-	-	



Low season



Mid season

[Month : Next >>](#)

Rental rates - Flat-Apartments - from 2 to 5 Person(s)

Rates	Night	Weekend	week	2 weeks	Month
Low season	\$A79* ↓ (Monday) > 2	\$A94* (Friday)	\$A472*	\$A787*	-
Mid season	\$A94* > 2	\$A102* (Friday)	\$A551*	\$A866*	-
High season	\$A110* > 2	\$A118* (Friday)	\$A630*	\$A1024*	-
Promotional period	\$A71* ↓ > 3	\$A79* (Friday)	-	-	-

↓ Reducing rates (Check-in day) > Minimum Night

[Book now](#)

Booking conditions

• Reservation

→ Payment made upon reservation :
30% of rental sum
→ Payment balance :
2 days before the stay

• rentals

→ Service charges included
→ Day tax included
→ Cleaning charge on departure included

[▶ Book now](#)

[▶ Contact the owner](#)

Accepted methods of payment

• Visa/Delta/Electron • Bank transfer
(wire)

Contact directly the property owners

www.au.iha.com

Advert No.

10340

[>> Book now <<](#)

Contact

Spoken languages



* Converted at the rate indicated : €100 = \$110 = £91 = \$A157.48

Advert No. 10340

www.au.iha.com



[>> HOLIDAY LETTINGS](#)

[BOOK DIRECT WITH THE OWNERS](#)