

Holiday lettings Solto Collina "La Casa nel Bosco"

The House is near the top of a hill overlooking a lake at a height of about 500 meters. In relative isolation, it is surrounded by a large wooded area.



Stone-Built House, detached, 1 floor, separate entrance, in a(an) Charming Property

Setting : calm, quiet

Capacity : from 1 to 4 person(s)

Bedroom(s) : 1

Room(s) : 1

Solto Collina - Province of Bergamo (BG) - Lombardy

Italy

Advert No. 9354

www.au.iha.com



>> HOLIDAY LETTINGS

BOOK DIRECT WITH THE OWNERS

Holiday lettings



Stone-Built House, detached, 1 floor, separate entrance, in a(an) Charming Property

- **Ideal for couples, couples with baby**
- **View** : panoramic, not overlooked, mountain, country side, garden/park, lake
- **Setting** : calm, quiet
- **Exposure** : South-east

" The house is one space converted from a barn, built in the early twentieth century. On the ground floor a living room with American kitchen, fireplace and a double sofa bed. Upstairs the bedroom area and bathroom with shower and bidet. The house is suitable for a family with two children, although it is more suitable for two people. Wood and gas for heating is not included in the listed price and they are payable locally. On request we can arrange check in days other than those indicated in the announcement. It is suggested that you bring with you for outdoor shoes and flashlights for the night. Pets and dogs are welcome, for dogs, please always indicate the breed, size, age and character. As the location is close to a wood, there are wild animals that can approach the house. You must take appropriate precautions and should give absolutely no food of any kind (including dormice, foxes, squirrels, badgers, pheasants). "

Assets

- **Swimming pool** :
Shared swimming pool, circular (diameter 4m), step ladder, outside shower (open from '30 june' till '01 september')
- **Parking** :
Parking uncovered : 4 off road.
- **baby equipment** :
Baby chair

Surroundings & location



Countryside



Fishing

" You should get informed about leisure activities in the area of Lake Iseo. Material is available in the home. Lake Iseo, on two coasts, offers countless opportunities and areas for sports. Montecampione ski resort is a 30 minute journey. The Vallecamonica and its mountains offer wonderful excursions. Montisola island is reachable by ferry from nearby Riva di Solto and Lovere. Bergamo and Brescia are no more than an hour away. The first hospital is located in Lovere, about 8 km from the house. The town of Solto Collina provides all the services: mail, ATMs, pharmacy, supermarket, bakery, tobacconist and newsagent. "

Leisure

- **Leisure activities less than 20 km / 12 miles** :

Alpine skiing, cross-country skiing, off-piste skiing, ski-trekking, snowboarding, ice-skating, skidoo, bathing, pedalo, scuba diving, water skiing, windsurfing, sailing, kite surfing, canoeing, tennis, riding school, hiking, rock climbing, mountain bike (path), hang-gliding, boat trips, horse trekking, ATV/ Quad Bike, ten-pin bowling, basketball, volleyball, clay pidgeon shooting, fishing, pétanque pitch

- **Supervised** :

Ski school, sailing school, dive school

Surroundings

- **Locality** :

Ski slopes 20km
Ski lifts 20km
Heated swimming pool 7,5km
Shingle beach 5km
Public swimming pool 7,5km
Public tennis court 4km
Flying clubs 40km
Windsurfing spots 5km
Watersports centre 7,5km
River 7,5km
Lake 5km
Forest 25km
Mountain range 20km
Marina 7,5km
Slipway 7,5km



Winter



view over the lake



Stone-Built House

Interior

- **Receive up to :**
from 1 to 4 person(s) (2 adults, 2 children)
- **Liveable floor area :**
22m²
- **Interior layout :**
1 Room(s), 1 bedroom(s), sleeping area, 1 shower room, 1 WC, living room 20m², american style kitchen, cosy nook, patio
- **Sleeps - bed(s) :**
1 double bed(s), 1 sofa bed(s) 2 pers, 1 baby cot(s)
- **Guest facilities :**
Fireplace, DVD player, book collection, film collection, t.v points, internet access, hair dryer, heated towel rail, fly screens
- **Appliances :**
Crockery/cutlery, kitchen utensils, cafetiere, electric kettle, toaster, gas cooker, oven, micro-wave oven, extractor hood, refridgerator, freezer

Exterior

- **Ground surface :**
2 ha
- **Outside setting :**
Garden 200m², landscaped garden > 1000m², wooded park 1 ha, ornamental lake
- **Outside amenities :**
BBQ, garden table(s), 4 garden seat(s), parasol, 2 sun recliner(s), 1 hammock(s), sand pit



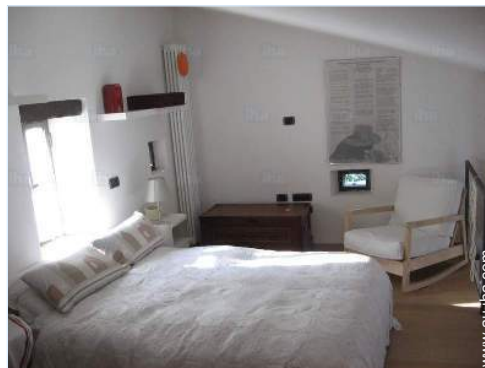
master bedroom

Services

- **Washing :**
Sheets supplement (1 X / per week +\$A8*), Towels supplement (1 X / per week +\$A8*), Linen supplement (1 X / per week +\$A8*)
- **House :**
Cleaning on departure supplement (+ \$A79*), Parking

For your guidance

- **For your guidance**
Children welcome
Pets accepted under certain conditions (ask the owner)
Present on site : pets, wild animals
Non smoking rental, mobile telephone network coverage, personal transport advisable
Water : hot/cold
Local voltage supply : 220V / 60Hz
Electricity supply : mains



master bedroom

Photo album - 1



view over the lake



Winter



Stone-Built House



master bedroom



master bedroom

Photo album - 2



kitchen



view from the garden/park



interior



shower room



shower room



Winter



Spring



south-easterly view



Autumn



panoramic view




Spring

Location



Location & Access

" Access by road is suitable for all vehicles. The transit is not possible until the House on Camper. Please, take into account that some common GPS on sale or available over the Internet until September 2015, give incorrect directions to get to the House. We strongly recommend that you follow the instructions that are given after the conclusion of the contract for check-in on arrival. "

 GPS coordinates in degrees, minutes, seconds: Latitude 45°47'16"N - Longitude 10° 2'32"E ([Dwelling](#))

Address

→ Via Mazzini
24060 Solto Collina

• Airport Bergamo Orio al Serio

→ Milan, Province of Milan, Lombardy, Italy
→ Distance : 40km
→ Time : 50'

• Motorway (junction) BERGAMO

→ Bergamo, Province of Bergamo, Lombardy, Italy
→ Distance : 40km
→ Time : 50'

• Train station Pisogne

→ Pisogne, Province of Brescia, Lombardy, Italy
→ Distance : 17km
→ Time : 20'

• Brescia : (60km)

• Bergamo : (40km)

• Lovere : (10km)

Contact

Spoken languages



Holiday lettings Solto Collina - Italy "La Casa nel Bosco"

7
[Book now](#)

Availability calendar - from : september 2020

Sep	Tu	W	Th	F	Sa	Su	M	Tu	W	Th	F	Sa	Su	M	Tu	W	Th	F	Sa	Su	M	Tu	W							
2020	1	2	3	4	5	6	7	8	9	10	11	12	13	14	15	16	17	18	19	20	21	22	23	24	25	26	27	28	29	30

Oct	Th	F	Sa	Su	M	Tu	W	Th	F	Sa	Su	M	Tu	W	Th	F	Sa	Su	M	Tu	W	Th	F	Sa	Su	M	Tu	W	Th	F	Sa
2020	1	2	3	4	5	6	7	8	9	10	11	12	13	14	15	16	17	18	19	20	21	22	23	24	25	26	27	28	29	30	31
	-	-	-	-	-	-	-	-	-	-	-	-	-	-	-	-	-	-	-	-	-	-	-	-	-	-	-	-	-	-	-

Nov	Su	M	Tu	W	Th	F	Sa	Su	M	Tu	W	Th	F	Sa	Su	M	Tu	W	Th	F	Sa	Su	M	Tu	W	Th	F	Sa	Su	M
2020	1	2	3	4	5	6	7	8	9	10	11	12	13	14	15	16	17	18	19	20	21	22	23	24	25	26	27	28	29	30
	-	-	-	-	-	-	-	-	-	-	-	-	-	-	-	-	-	-	-	-	-	-	-	-	-	-	-	-	-	-

Dec	Tu	W	Th	F	Sa	Su	M	Tu	W	Th	F	Sa	Su	M	Tu	W	Th	F	Sa	Su	M	Tu	W	Th	F	Sa	Su	M	Tu	W	Th
2020	1	2	3	4	5	6	7	8	9	10	11	12	13	14	15	16	17	18	19	20	21	22	23	24	25	26	27	28	29	30	31
	-	-	-	-	-	-	-	-	-	-	-	-	-	-	-	-	-	-	-	-	-	-	-	-	-	-	-	-	-	-	-

Jan	F	Sa	Su	M	Tu	W	Th	F	Sa	Su	M	Tu	W	Th	F	Sa	Su	M	Tu	W	Th	F	Sa	Su	M	Tu	W	Th	F	Sa	Su
2021	1	2	3	4	5	6	7	8	9	10	11	12	13	14	15	16	17	18	19	20	21	22	23	24	25	26	27	28	29	30	31
	-	-	-	-	-	-	-	-	-	-	-	-	-	-	-	-	-	-	-	-	-	-	-	-	-	-	-	-	-	-	-

Feb	M	Tu	W	Th	F	Sa	Su	M	Tu	W	Th	F	Sa	Su	M	Tu	W	Th	F	Sa	Su							
2021	1	2	3	4	5	6	7	8	9	10	11	12	13	14	15	16	17	18	19	20	21	22	23	24	25	26	27	28
	-	-	-	-	-	-	-	-	-	-	-	-	-	-	-	-	-	-	-	-	-	-	-	-	-	-	-	-

Mar	M	Tu	W	Th	F	Sa	Su	M	Tu	W	Th	F	Sa	Su	M	Tu	W	Th	F	Sa	Su	M	Tu	W	Th	F	Sa	Su	M	Tu	W
2021	1	2	3	4	5	6	7	8	9	10	11	12	13	14	15	16	17	18	19	20	21	22	23	24	25	26	27	28	29	30	31
	-	-	-	-	-	-	-	-	-	-	-	-	-	-	-	-	-	-	-	-	-	-	-	-	-	-	-	-	-	-	-

Apr	Th	F	Sa	Su	M	Tu	W	Th	F	Sa	Su	M	Tu	W	Th	F	Sa	Su	M	Tu	W	Th	F	Sa	Su	M	Tu	W	Th	F
2021	1	2	3	4	5	6	7	8	9	10	11	12	13	14	15	16	17	18	19	20	21	22	23	24	25	26	27	28	29	30
	-	-	-	-	-	-	-	-	-	-	-	-	-	-	-	-	-	-	-	-	-	-	-	-	-	-	-	-	-	-

May	Sa	Su	M	Tu	W	Th	F	Sa	Su	M	Tu	W	Th	F	Sa	Su	M	Tu	W	Th	F	Sa	Su	M	Tu	W	Th	F	Sa	Su	M
2021	1	2	3	4	5	6	7	8	9	10	11	12	13	14	15	16	17	18	19	20	21	22	23	24	25	26	27	28	29	30	31
	-	-	-	-	-	-	-	-	-	-	-	-	-	-	-	-	-	-	-	-	-	-	-	-	-	-	-	-	-	-	-

June	Tu	W	Th	F	Sa	Su	M	Tu	W	Th	F	Sa	Su	M	Tu	W	Th	F	Sa	Su	M	Tu	W							
2021	1	2	3	4	5	6	7	8	9	10	11	12	13	14	15	16	17	18	19	20	21	22	23	24	25	26	27	28	29	30
	-	-	-	-	-	-	-	-	-	-	-	-	-	-	-	-	-	-	-	-	-	-	-	-	-	-	-	-	-	-

Holiday lettings
Province of Bergamo - Lombardy
"La Casa nel Bosco"

8
[Book now](#)






Availability calendar - from : june 2021

Jul	Th	F	Sa	Su	M	Tu	W	Th	F	Sa	Su	M	Tu	W	Th	F	Sa	Su	M	Tu	W	Th	F	Sa							
2021	1	2	3	4	5	6	7	8	9	10	11	12	13	14	15	16	17	18	19	20	21	22	23	24	25	26	27	28	29	30	31
-	-	-	-	-	-	-	-	-	-	-	-	-	-	-	-	-	-	-	-	-	-	-	-	-	-	-	-	-	-	-	

Aug	Su	M	Tu	W	Th	F	Sa	Su	M	Tu	W	Th	F	Sa	Su	M	Tu	W	Th	F	Sa	Su	M	Tu							
2021	1	2	3	4	5	6	7	8	9	10	11	12	13	14	15	16	17	18	19	20	21	22	23	24	25	26	27	28	29	30	31
-	-	-	-	-	-	-	-	-	-	-	-	-	-	-	-	-	-	-	-	-	-	-	-	-	-	-	-	-	-	-	

[Month : Next >>](#)

Rental rates - Stone-Built House - from 1 to 4 Person(s)

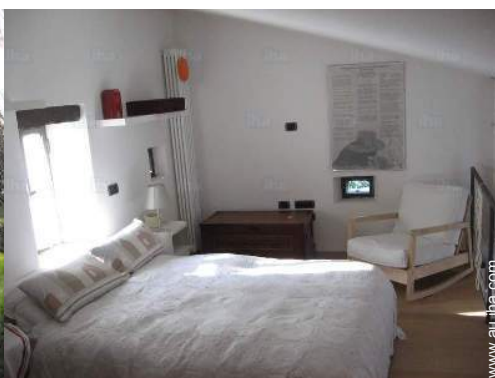
Rates	Night	Weekend	week	2 weeks	Month
 Low season	\$A126* ↓ > 3	\$A378* (Friday)	\$A882* (Saturday)	\$A1575* (Saturday)	\$A2677*
 Mid season	\$A142* (Saturday) > 3	\$A394* (Friday)	\$A937* (Saturday)	\$A1811* (Saturday)	\$A2992* (Saturday)
 High season	\$A157* ↓ (Saturday) > 3	\$A472* (Friday)	\$A1102* (Saturday)	\$A2047* (Saturday)	\$A3307* (Saturday)
 Festive specials	\$A157* ↓ (Saturday) > 3	\$A465* (Friday)	\$A1102* (Saturday)	\$A2205* (Saturday)	\$A3465* (Saturday)
 Promotional period	\$A118* (Saturday) > 3	\$A299* (Saturday)	\$A787* (Saturday)	\$A1417* (Saturday)	\$A2362*

↓ Reducing rates (Check-in day) > Minimum Night

[Book now](#)



Stone-Built House



master bedroom



master bedroom



view over the lake



Winter

Booking conditions

• Reservation

- Payment made upon reservation : 25% of rental sum
- Payment balance : on handing over the keys
- Deposit required : \$A315*

• rentals

- Service charges to be added
- Day tax included
- Cleaning charge levy on departure : \$A110*
- Anticipated supplement for :
 - baby
 - animals
 - firewood

Accepted methods of payment

- Bank transfer (wire) • Cash

[▶ Book now](#)

[▶ Contact the owner](#)

Contact directly the property owners

www.au.ih.com

Advert No.

9354

[>> Book now <<](#)

Contact

Spoken languages



* Converted at the rate indicated : €100 = \$110 = £91 = \$A157.48

Advert No. 9354

www.au.ih.com

