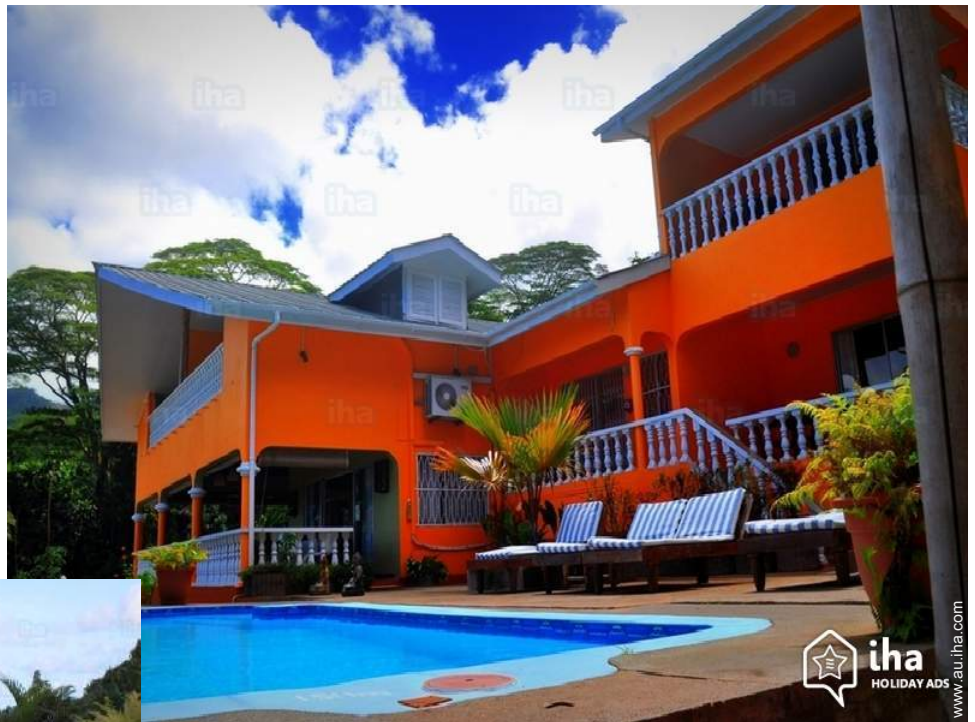


# Guest House - Bed & Breakfast Anse aux Pins "Albizia Lodge"



Charming Creole House, detached, 1 floor, separate entrance, in a(an) Private property

Setting : peaceful, tropical

Guest Room(s) : 4

Receive up to : from 1 to 16 guests

- Room "Chambre de Famille 1"  
4 person(s)
- Room "Chambre de Famille 3"  
4 person(s)
- Room "Chambre Double 2"  
2 person(s)
- Room "Lodge 6 Bedrooms"  
18 person(s)

Anse aux Pins - Mahé Island - Inner Islands

Seychelles

Reservation : +248 (0) 2815881 (Seychelles)

Advert No. 71376

www.au.ihacom



>> HOLIDAY LETTINGS

BOOK DIRECT WITH THE OWNERS

### Guest House - Bed & Breakfast



Charming Creole House, detached, 1 floor, separate entrance, in a(an) Private property

- **Ideal for all age groups, family groups**
- **View :** panoramic, unobscured, sea/ocean, swimming pool, village
- **Setting :** peaceful, tropical
- **Exposure :** South-east

### Assets

- **Swimming pool :**  
Shared swimming pool, rectangular, steps in, outside shower (open from '01 january' till '31 december')
- **Parking :**  
Parking uncovered
- **Advantages :**  
Sunbed, billiard table
- **baby equipment :**  
Baby chair, playpen



### Surroundings & location



#### Leisure

- Leisure activities less than 20 km / 12 miles :  
Bathing

#### Surroundings

- **Locality :**  
Sea/ocean 100m  
Stretch of water  
Forest
- **Amenities :**  
Village centre  
Bus stop / bus station



Advert No. 71376

[www.au.iha.com](http://www.au.iha.com)



Guest House - Bed & Breakfast  
Anse aux Pins - Seychelles  
"Albizia Lodge"

3

[Book now](#)



### Exterior

- Exterior facilities at guests disposal :  
Terrace, covered terrace, balcony, sundeck
- Outside at the guests disposal :  
Garden, tropical garden
- Exterior amenities at guests disposal :  
Pizza oven, BBQ, garden table(s), garden seat(s), garden seated area, 6 chaise(s) longue(s), sun lounger, outside shower facilities, outside toilet facilities

### Interior

- Receive up to :  
from 1 to 16 guests, 4 Guest Room(s)
- Interior comforts at guests disposal :  
T.V., telephone, internet access, wifi, washing machine, fully air conditioned, iron, ceiling paddle fan



### Services

- Restauration :  
BBQ meal supplement (+\$A47\*), Half board supplement (+\$A31\*), Full board supplement (+\$A55\*), Picnic basket supplement (+\$A24\*)
- Washing :  
Sheets, Towels, Linen, Beach towels, Blanket(s), Quilt(s), Pillows
- House :  
Cleaning, Cleaning on departure, Garden/swimming pool maintenance, Parking, Airport transfers supplement
- Personnel :  
Staff, Laundry, Baby sitting supplement

### For your guidance

- For your guidance  
Children welcome  
No pet allowed  
Mobile telephone network coverage, personal transport advisable  
Water : hot/cold  
Local voltage supply : 220-240V / 50Hz
- Handicapped people welcome  
Wheelchair access



Advert No. 71376

[www.au.iha.com](http://www.au.iha.com)



Room "Chambre de Famille 1"



4 person(s) : 4 adults

**Ideal for family**



●Interior layout and facilities :

1 shower room, 1 WC, veranda

●Sleeps - bed(s) :

1 double bed(s), 2 single bed(s)

●View :

Panoramic, unobscured, dominant, sea/ocean, swimming pool, forest

●Facilities exclusive to :

Separate entrance

●Guest facilities and furnishings :

Electric kettle, cupboard, Hanging wardrobe, reffridgerator, fully air conditioned, Curtains

●Exterior private facilities :

Balcony



Room "Chambre de Famille 3"

4 person(s) : 4 children

Room "Chambre Double 2"

2 person(s) : 2 children

Room "Lodge 6 Bedrooms"

18 person(s) : 12 adults - 6 children

**Ideal for family groups**

•Interior layout and facilities :

7 shower room, living room, sitting room, Kitchen Area, dining room, dining area, cosy nook, tv room, veranda

•Sleeps - bed(s) :

6 double bed(s), 6 single bed(s), 2 baby cot(s)

•View :

Panoramic, unobscured, dominant, sea/ocean, mountain, swimming pool

•Guest facilities and furnishings :

T.V., electric coffee maker, DVD player, electric kettle, cable/satellite, internet access, wifi, oven, wardrobe, cupboard, Hanging wardrobe, micro-wave oven, hair dryer, refridgerator, power shower, washing machine, partly air conditioned, clothes dryer, mobile cool air fan, iron,

ceiling paddle fan, ironing board, Curtains

•baby equipment :

Baby chair

•Exterior private facilities :

Summer kitchen, covered terrace, balcony, sundeck, BBQ, garden table(s), garden seat(s), parasol, chaise(s) longue(s), sun recliner(s), sun lounger, outside shower facilities, outside toilet facilities

Guest House - Bed & Breakfast  
Inner Islands - Seychelles  
"Albizia Lodge"

6

[Book now](#)

Photo album - 1



Advert No. 71376

[www.au.ih.com](http://www.au.ih.com)



[>> HOLIDAY LETTINGS](#)

[BOOK DIRECT WITH THE OWNERS](#)

Guest House - Bed & Breakfast  
Anse aux Pins - Seychelles  
"Albizia Lodge"

7

[Book now](#)

Photo album - 2



Advert No. 71376

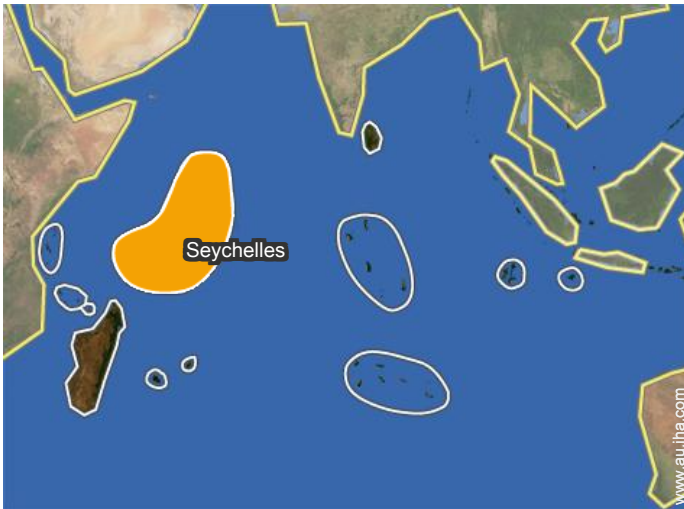
[www.au.ih.com](http://www.au.ih.com)



>> HOLIDAY LETTINGS

BOOK DIRECT WITH THE OWNERS

Location



Location & Access



GPS coordinates in degrees, minutes, seconds: Latitude 4°41'56"S - Longitude 55°31'0"E ([Dwelling](#))

Address

→ Au Cap  
Green Estate

• Motorway (junction) E Coast Road

→ Anse aux Pins, Mahé Island, Inner  
Islands, Seychelles

→ Time : 15'

• Anse Royale : (5km)

Contact

Spoken  
languages
















Guest House - Bed & Breakfast  
Anse aux Pins - Seychelles  
**"Albizia Lodge"**

9

[Book now](#)

Rental rates "Albizia Lodge"

Guest House - Bed & Breakfast Rates		Night	Weekend	week	2 weeks	Month
1 Room "Lodge 6 Bedrooms" 18 person(s) (12 adults - 6 children)		\$A787*	-	\$A4409*	\$A8268*	\$A16063*
		\$A945*	-	\$A6063*	-	\$A23622*
2 Room "Chambre de Famille 1" 4 person(s) (4 adults) 		\$A205*	-	\$A1323*	\$A2535*	\$A4724*
		-	-	-	-	-
3 Room "Chambre Double 2" 2 person(s) (2 children)		-	-	-	-	-
		-	-	-	-	-
4 Room "Chambre de Famille 3" 4 person(s) (4 children)		-	-	-	-	-
		-	-	-	-	-

 Low season  High season

[Book now](#)

Booking conditions

• Reservation

→ Payment made upon reservation :  
50% of rental sum  
→ Payment balance :  
on handing over the keys

• rentals

→ Service charges included  
→ Day tax included  
→ Cleaning charge on departure included

[▶ Book now](#)

[▶ Contact the owner](#)

Accepted methods of payment

• Visa/Delta/Electron • Bank transfer (wire)  
• MasterCard/EuroCard • Cash

Contact directly the property owners

[www.au.ih.com](http://www.au.ih.com)

Advert No.

71376

>> [Book now](#) <<

Contact

Spoken languages



\* Converted at the rate indicated : €100 = \$116.85 = £89 = \$A157.48

Advert No. 71376

[www.au.ih.com](http://www.au.ih.com)



>> HOLIDAY LETTINGS

BOOK DIRECT WITH THE OWNERS